



Anti-SHARPIN antibody ab236092

4 Images

Overview

Product name	Anti-SHARPIN antibody
Description	Rabbit polyclonal to SHARPIN
Host species	Rabbit
Tested applications	Suitable for: WB, IHC-P, ICC/IF
Species reactivity	Reacts with: Human
Immunogen	Recombinant fragment corresponding to Human SHARPIN aa 50-200. Database link: Q9H0F6
	 Run BLAST with  Run BLAST with
Positive control	WB: HeLa, Jurkat, A549 and L02 whole cell lysates. IHC-P: Human skeletal muscle and prostate cancer tissue. ICC/IF: PC-3 cells.
General notes	<p>The Life Science industry has been in the grips of a reproducibility crisis for a number of years. Abcam is leading the way in addressing this with our range of recombinant monoclonal antibodies and knockout edited cell lines for gold-standard validation. Please check that this product meets your needs before purchasing.</p> <p>If you have any questions, special requirements or concerns, please send us an inquiry and/or contact our Support team ahead of purchase. Recommended alternatives for this product can be found below, along with publications, customer reviews and Q&As</p>

Properties

Form	Liquid
Storage instructions	Shipped at 4°C. Store at +4°C short term (1-2 weeks). Upon delivery aliquot. Store at -20°C long term. Avoid freeze / thaw cycle.
Storage buffer	pH: 7.40 Preservative: 0.03% Proclin 300 Constituents: PBS, 50% Glycerol (glycerin, glycerine)
Purity	Protein G purified
Purification notes	Purity >95%.
Clonality	Polyclonal
Isotype	IgG

Applications

The Abpromise guarantee

Our **Abpromise guarantee** covers the use of ab236092 in the following tested applications.

The application notes include recommended starting dilutions; optimal dilutions/concentrations should be determined by the end user.

Application	Abreviews	Notes
WB		1/500 - 1/5000. Predicted molecular weight: 40 kDa.
IHC-P		1/500 - 1/1000.
ICC/IF		1/50 - 1/200.

Target

Function

May have a role in normal immune development and control of inflammation.

Tissue specificity

Highly expressed in skeletal muscle and placenta and at lower levels in brain, heart, colon without mucosa, thymus, spleen, kidney, liver, small intestine, lung and peripheral blood leukocytes.

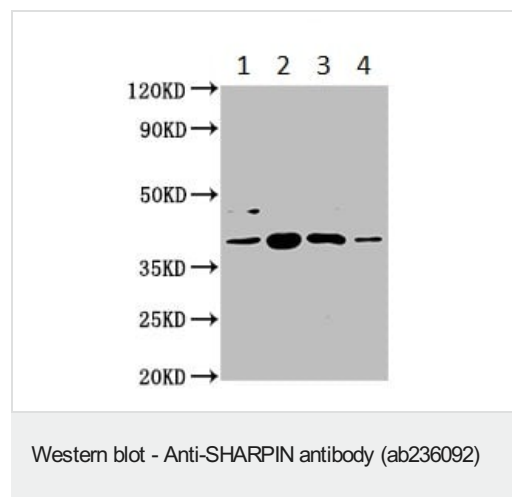
Sequence similarities

Contains 1 RanBP2-type zinc finger.

Cellular localization

Cytoplasm. Enriched at synaptic sites in mature neurons where it colocalizes with SHANK1.

Images



All lanes : Anti-SHARPIN antibody (ab236092) at 1/500 dilution

Lane 1 : HeLa (human epithelial cell line from cervix adenocarcinoma) whole cell lysate

Lane 2 : Jurkat (human T cell leukemia cell line from peripheral blood) whole cell lysate

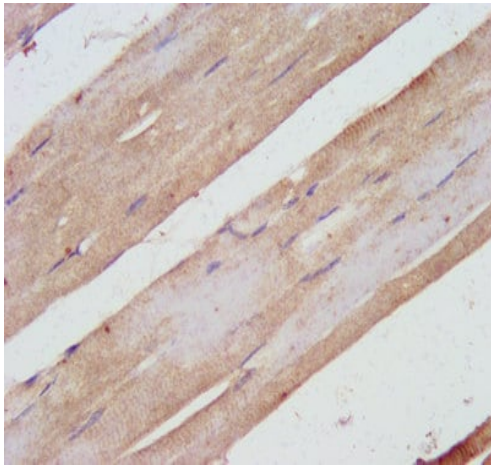
Lane 3 : A549 (human lung carcinoma cell line) whole cell lysate

Lane 4 : L02 (human immortal liver cell line) whole cell lysate

Secondary

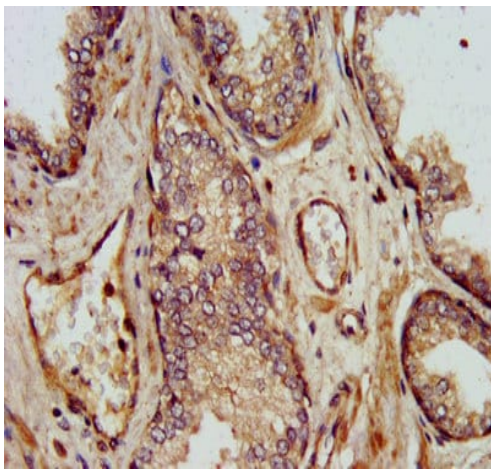
All lanes : Goat polyclonal to rabbit IgG at 1/50000 dilution

Predicted band size: 40 kDa



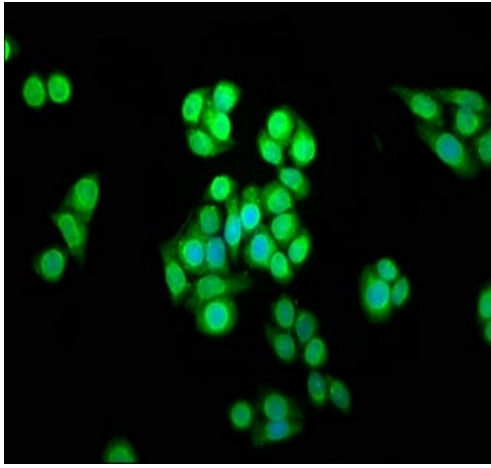
Immunohistochemistry (Formalin/PFA-fixed paraffin-embedded sections) - Anti-SHARPIN antibody (ab236092)

Paraffin-embedded human skeletal muscle tissue stained for SHARPIN using ab236092 at 1/500 dilution in immunohistochemical analysis. After dewaxing and hydration, antigen retrieval was mediated by high pressure in a citrate buffer (pH 6.0). Section was blocked with 10% normal goat serum 30 minutes at RT. Then primary antibody (1% BSA) was incubated at 4°C overnight. The primary is detected by a biotinylated secondary antibody and visualized tissue using an HRP conjugated SP system.



Immunohistochemistry (Formalin/PFA-fixed paraffin-embedded sections) - Anti-SHARPIN antibody (ab236092)

Paraffin-embedded human prostate cancer tissue stained for SHARPIN using ab236092 at 1/500 dilution in immunohistochemical analysis. After dewaxing and hydration, antigen retrieval was mediated by high pressure in a citrate buffer (pH 6.0). Section was blocked with 10% normal goat serum 30 minutes at RT. Then primary antibody (1% BSA) was incubated at 4°C overnight. The primary is detected by a biotinylated secondary antibody and visualized tissue using an HRP conjugated SP system.



Immunocytochemistry/ Immunofluorescence - Anti-SHARPIN antibody (ab236092)

4% paraformaldehyde-fixed, 0.2% Triton X-100 permeabilized PC-3 (human epithelial cell line from cervix adenocarcinoma) cells stained for SHARPIN (green) using ab236092 at 1/166 dilution in ICC/IF. Secondary antibody is Alexa Fluor® 488-conjugated Goat Anti-Rabbit IgG (H+L).

Please note: All products are "FOR RESEARCH USE ONLY. NOT FOR USE IN DIAGNOSTIC PROCEDURES"

Our Abpromise to you: Quality guaranteed and expert technical support

- Replacement or refund for products not performing as stated on the datasheet
- Valid for 12 months from date of delivery
- Response to your inquiry within 24 hours
- We provide support in Chinese, English, French, German, Japanese and Spanish
- Extensive multi-media technical resources to help you
- We investigate all quality concerns to ensure our products perform to the highest standards

If the product does not perform as described on this datasheet, we will offer a refund or replacement. For full details of the Abpromise, please visit <https://www.abcam.com/abpromise> or contact our technical team.

Terms and conditions

- Guarantee only valid for products bought direct from Abcam or one of our authorized distributors