

Product datasheet

Anti-SHMT2/SHMT antibody ab155230

★★★★★ [1 Abreviews](#) [3 Images](#)

Overview

Product name	Anti-SHMT2/SHMT antibody
Description	Rabbit polyclonal to SHMT2/SHMT
Host species	Rabbit
Tested applications	Suitable for: ICC/IF, WB, IHC-P
Species reactivity	Reacts with: Human
Immunogen	Recombinant fragment corresponding to Human SHMT2/SHMT aa 1-483. Database link: P34897
Positive control	293T and HeLa whole cell lysates, HeLa cells, HeLa xenograft
General notes	<p>The Life Science industry has been in the grips of a reproducibility crisis for a number of years. Abcam is leading the way in addressing this with our range of recombinant monoclonal antibodies and knockout edited cell lines for gold-standard validation. Please check that this product meets your needs before purchasing.</p> <p>If you have any questions, special requirements or concerns, please send us an inquiry and/or contact our Support team ahead of purchase. Recommended alternatives for this product can be found below, along with publications, customer reviews and Q&As</p>

Properties

Form	Liquid
Storage instructions	Shipped at 4°C. Upon delivery aliquot. Store at -20°C or -80°C. Avoid freeze / thaw cycle.
Storage buffer	pH: 7.00 Preservative: 0.01% Thimerosal (merthiolate) Constituents: 79.99% PBS, 20% Glycerol (glycerin, glycerine)
Purity	Immunogen affinity purified
Clonality	Polyclonal
Isotype	IgG

Applications

The Abpromise guarantee Our **Abpromise guarantee** covers the use of ab155230 in the following tested applications.

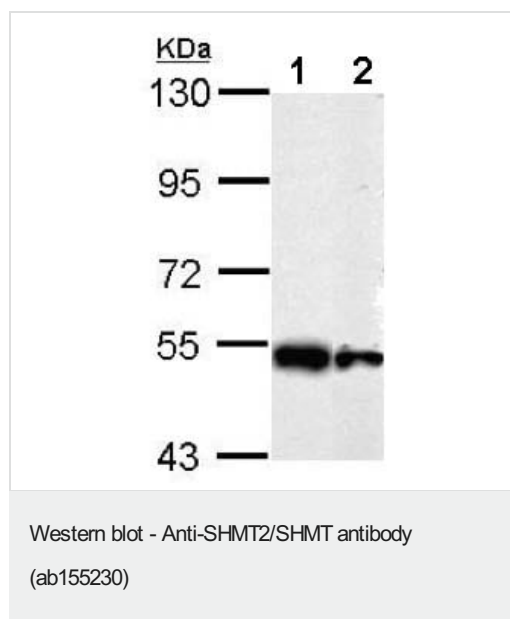
The application notes include recommended starting dilutions; optimal dilutions/concentrations should be determined by the end user.

Application	Abreviews	Notes
ICC/IF		1/100 - 1/1000.
WB	★★★★★ (1)	1/5000 - 1/20000. Predicted molecular weight: 56 kDa.
IHC-P		1/100 - 1/1000.

Target

Function	Contributes to the de novo mitochondrial thymidylate biosynthesis pathway. Required to prevent uracil accumulation in mtDNA. Interconversion of serine and glycine. Associates with mitochondrial DNA.
Pathway	One-carbon metabolism; tetrahydrofolate interconversion.
Sequence similarities	Belongs to the SHMT family.
Cellular localization	Mitochondrion. Mitochondrion matrix > mitochondrion nucleoid. Mitochondrion inner membrane.

Images



All lanes : Anti-SHMT2/SHMT antibody (ab155230) at 1/10000 dilution

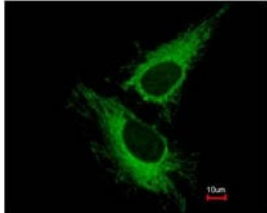
Lane 1 : 293T whole cell lysate

Lane 2 : HeLa whole cell lysate

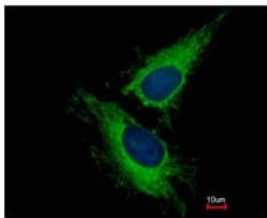
Lysates/proteins at 10 µg per lane.

Predicted band size: 56 kDa

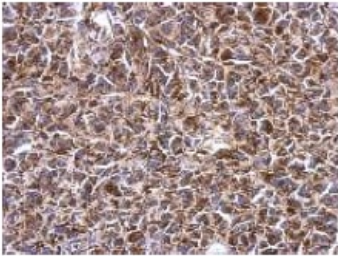
7.5% SDS PAGE



Immunofluorescent analysis of methanol-fixed HeLa cells labeling SHMT2/SHMT with ab155230 at 1/500. Image at the bottom costained with Hoechst 33342.



Immunocytochemistry/ Immunofluorescence - Anti-SHMT2/SHMT antibody (ab155230)



Immunohistochemical analysis of paraffin embedded HeLa xenograft labeling SHMT2/SHMT with ab155230 antibody at 1/500.

Immunohistochemistry (Formalin/PFA-fixed paraffin-embedded sections) - Anti-SHMT2/SHMT antibody (ab155230)

Please note: All products are "FOR RESEARCH USE ONLY. NOT FOR USE IN DIAGNOSTIC PROCEDURES"

Our Abpromise to you: Quality guaranteed and expert technical support

- Replacement or refund for products not performing as stated on the datasheet
- Valid for 12 months from date of delivery
- Response to your inquiry within 24 hours
- We provide support in Chinese, English, French, German, Japanese and Spanish
- Extensive multi-media technical resources to help you

- We investigate all quality concerns to ensure our products perform to the highest standards

If the product does not perform as described on this datasheet, we will offer a refund or replacement. For full details of the Abpromise, please visit <https://www.abcam.com/abpromise> or contact our technical team.

Terms and conditions

- Guarantee only valid for products bought direct from Abcam or one of our authorized distributors