




Product datasheet

Anti-SHMT2/SHMT antibody ab233430

9 Images

Overview

Product name	Anti-SHMT2/SHMT antibody
Description	Rabbit polyclonal to SHMT2/SHMT
Host species	Rabbit
Tested applications	Suitable for: WB, IHC-P, ICC/IF
Species reactivity	Reacts with: Human, Pig Predicted to work with: Rabbit, Cow 
Immunogen	Recombinant full length protein (His-T7-tag) corresponding to Human SHMT2/SHMT aa 1 to the C-terminus. Mature chain. Two N-terminal tags. Expressed in E.coli. Database link: P34897  Run BLAST with  Run BLAST with
Positive control	WB: Recombinant human SHMT2/SHMT protein; Human lung lysate; HEK-293T and HeLa cell lysates; Pig pancreas lysate. IHC-P: Human breast cancer, stomach, stomach cancer, rectum cancer, breast cancer, prostate and cerebrum tissue. ICC/IF: HeLa cells.
General notes	<p>The Life Science industry has been in the grips of a reproducibility crisis for a number of years. Abcam is leading the way in addressing this with our range of recombinant monoclonal antibodies and knockout edited cell lines for gold-standard validation. Please check that this product meets your needs before purchasing.</p> <p>If you have any questions, special requirements or concerns, please send us an inquiry and/or contact our Support team ahead of purchase. Recommended alternatives for this product can be found below, along with publications, customer reviews and Q&As</p>

Properties

Form	Liquid
Storage instructions	Shipped at 4°C. Store at +4°C short term (1-2 weeks). Upon delivery aliquot. Store at -20°C long term. Avoid freeze / thaw cycle.
Storage buffer	pH: 7.40 Preservative: 0.011% Proclin 300 Constituents: 55.77% Glycerol (glycerin, glycerine), 44.219% PBS
Purity	Immunogen affinity purified
Purification notes	Antigen-specific affinity chromatography followed by Protein A affinity chromatography.

Clonality	Polyclonal
Isotype	IgG

Applications

The Abpromise guarantee Our **Abpromise guarantee** covers the use of ab233430 in the following tested applications.

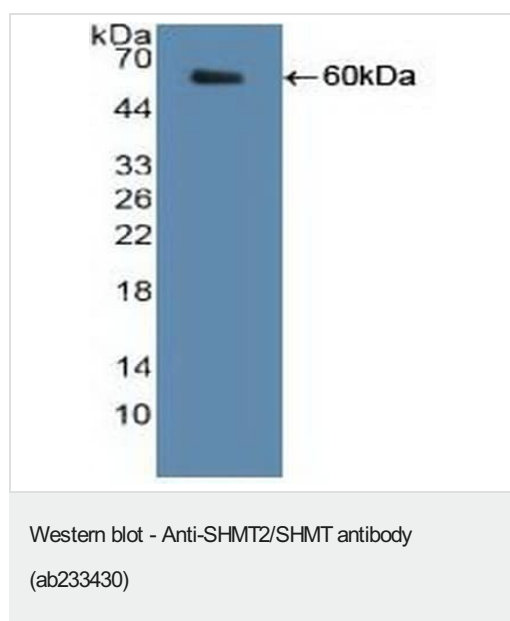
The application notes include recommended starting dilutions; optimal dilutions/concentrations should be determined by the end user.

Application	Abreviews	Notes
WB		Use a concentration of 0.5 - 2 µg/ml. Predicted molecular weight: 56 kDa.
IHC-P		Use a concentration of 5 - 20 µg/ml.
ICC/IF		Use a concentration of 5 - 20 µg/ml.

Target

Function	Contributes to the de novo mitochondrial thymidylate biosynthesis pathway. Required to prevent uracil accumulation in mtDNA. Interconversion of serine and glycine. Associates with mitochondrial DNA.
Pathway	One-carbon metabolism; tetrahydrofolate interconversion.
Sequence similarities	Belongs to the SHMT family.
Cellular localization	Mitochondrion. Mitochondrion matrix > mitochondrion nucleoid. Mitochondrion inner membrane.

Images

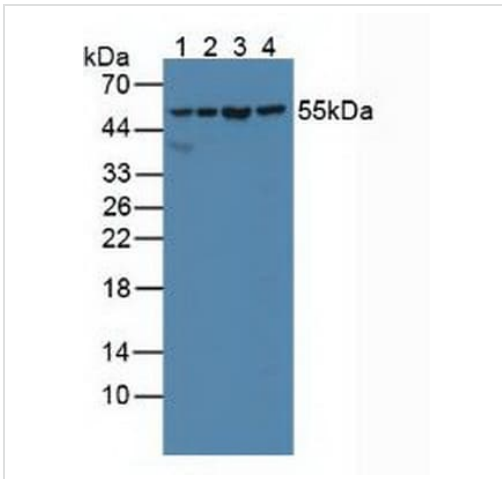


Anti-SHMT2/SHMT antibody (ab233430) at 1 µg/ml + Recombinant human SHMT2/SHMT protein

Secondary

HRP-Linked Guinea pig anti-Rabbit at 1/2000 dilution

Predicted band size: 56 kDa



Western blot - Anti-SHMT2/SHMT antibody
(ab233430)

All lanes : Anti-SHMT2/SHMT antibody (ab233430) at 1 μ g/ml

Lane 1 : Human lung lysate

Lane 2 : HEK-293T (human epithelial cell line from embryonic kidney transformed with large T antigen) cell lysate

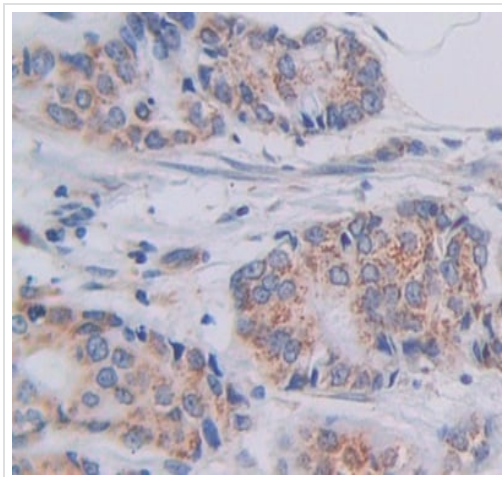
Lane 3 : HeLa (human epithelial cell line from cervix adenocarcinoma) cell lysate

Lane 4 : Pig pancreas lysate

Secondary

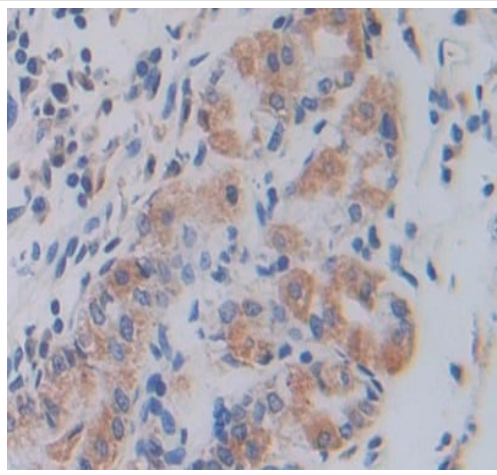
All lanes : HRP-Linked Guinea pig anti-Rabbit at 1/2000 dilution

Predicted band size: 56 kDa



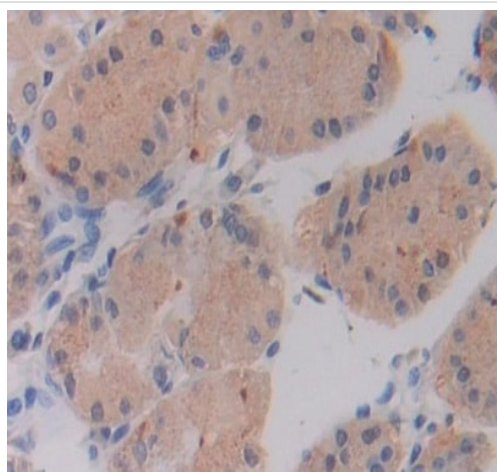
Immunohistochemistry (Formalin/PFA-fixed paraffin-embedded sections) - Anti-SHMT2/SHMT antibody
(ab233430)

Formalin-fixed, paraffin-embedded human breast cancer tissue stained for SHMT2 using ab233430 at 20 μ g/ml in immunohistochemical analysis. DAB staining.



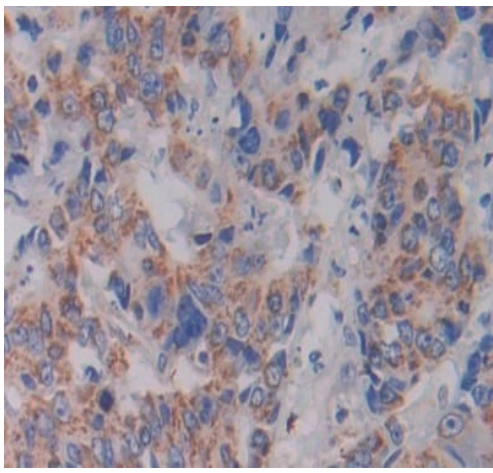
Formalin-fixed, paraffin-embedded human stomach tissue stained for SHNT2 using ab233430 at 20 $\mu\text{g}/\text{ml}$ in immunohistochemical analysis. DAB staining.

Immunohistochemistry (Formalin/PFA-fixed paraffin-embedded sections) - Anti-SHMT2/SHMT antibody (ab233430)



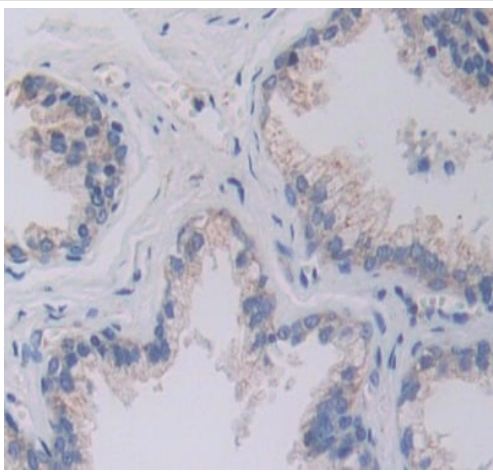
Formalin-fixed, paraffin-embedded human stomach cancer tissue stained for SHNT2 using ab233430 at 20 $\mu\text{g}/\text{ml}$ in immunohistochemical analysis. DAB staining.

Immunohistochemistry (Formalin/PFA-fixed paraffin-embedded sections) - Anti-SHMT2/SHMT antibody (ab233430)



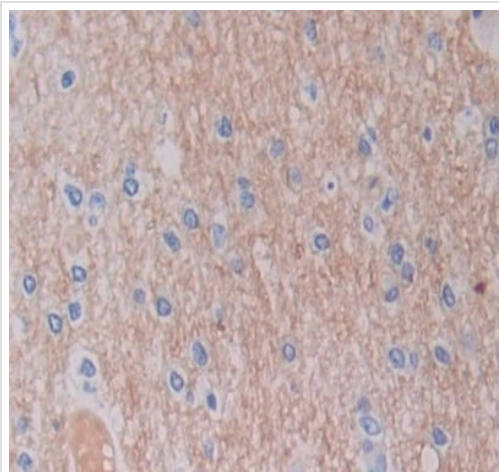
Immunohistochemistry (Formalin/PFA-fixed paraffin-embedded sections) - Anti-SHMT2/SHMT antibody (ab233430)

Formalin-fixed, paraffin-embedded human colorectal cancer tissue stained for SHNT2 using ab233430 at 20 $\mu\text{g/ml}$ in immunohistochemical analysis. DAB staining.



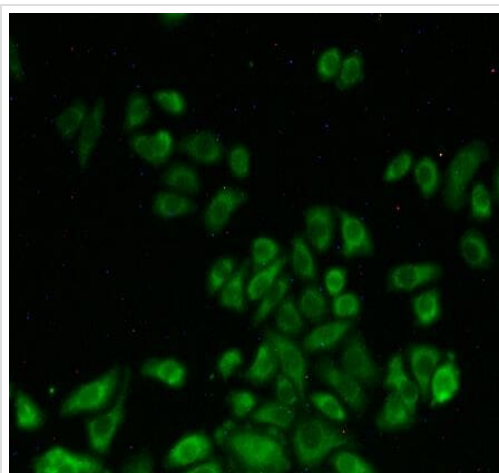
Immunohistochemistry (Formalin/PFA-fixed paraffin-embedded sections) - Anti-SHMT2/SHMT antibody (ab233430)

Formalin-fixed, paraffin-embedded human prostate tissue stained for SHNT2 using ab233430 at 20 $\mu\text{g/ml}$ in immunohistochemical analysis. DAB staining.



Formalin-fixed, paraffin-embedded human cerebrum tissue stained for SHMT2 using ab233430 at 20 µg/ml in immunohistochemical analysis. DAB staining.

Immunohistochemistry (Formalin/PFA-fixed paraffin-embedded sections) - Anti-SHMT2/SHMT antibody (ab233430)



HeLa (human epithelial cell line from cervix adenocarcinoma) cells stained for SHMT2/SHMT (green) using ab233430 at 20 µg/ml in ICC/IF. FITC staining.

Immunocytochemistry/ Immunofluorescence - Anti-SHMT2/SHMT antibody (ab233430)

Please note: All products are "FOR RESEARCH USE ONLY. NOT FOR USE IN DIAGNOSTIC PROCEDURES"

Our Abpromise to you: Quality guaranteed and expert technical support

- Replacement or refund for products not performing as stated on the datasheet
- Valid for 12 months from date of delivery
- Response to your inquiry within 24 hours
- We provide support in Chinese, English, French, German, Japanese and Spanish
- Extensive multi-media technical resources to help you
- We investigate all quality concerns to ensure our products perform to the highest standards

If the product does not perform as described on this datasheet, we will offer a refund or replacement. For full details of the Abpromise, please visit <https://www.abcam.com/abpromise> or contact our technical team.

Terms and conditions

- Guarantee only valid for products bought direct from Abcam or one of our authorized distributors