




Product datasheet

Anti-Shoc2 / Sur8 antibody ab229805

[4 Images](#)

Overview

Product name	Anti-Shoc2 / Sur8 antibody
Description	Rabbit polyclonal to Shoc2 / Sur8
Host species	Rabbit
Tested applications	Suitable for: WB, ICC/IF, IHC-P
Species reactivity	Reacts with: Human Predicted to work with: Mouse, Rat, Chicken, Cow, Orangutan 
Immunogen	Recombinant fragment corresponding to Human Shoc2/ Sur8 aa 1-100. Database link: Q9UQ13 <div>  Run BLAST with  Run BLAST with </div>
Positive control	WB: MCF7, Jurkat and HepG2 whole cell lysates. IHC-P: Human lung and brain tissues. ICC/IF: HeLa cells.
General notes	<p>The Life Science industry has been in the grips of a reproducibility crisis for a number of years. Abcam is leading the way in addressing this with our range of recombinant monoclonal antibodies and knockout edited cell lines for gold-standard validation. Please check that this product meets your needs before purchasing.</p> <p>If you have any questions, special requirements or concerns, please send us an inquiry and/or contact our Support team ahead of purchase. Recommended alternatives for this product can be found below, along with publications, customer reviews and Q&As</p>

Properties

Form	Liquid
Storage instructions	Shipped at 4°C. Store at +4°C short term (1-2 weeks). Upon delivery aliquot. Store at -20°C long term. Avoid freeze / thaw cycle.
Storage buffer	pH: 7.40 Preservative: 0.03% Proclin 300 Constituents: 50% Glycerol (glycerin, glycerine), PBS
Purity	Protein G purified
Purification notes	Purity >95%.
Clonality	Polyclonal
Isotype	IgG

Applications

The Abpromise guarantee

Our [Abpromise guarantee](#) covers the use of ab229805 in the following tested applications.

The application notes include recommended starting dilutions; optimal dilutions/concentrations should be determined by the end user.

Application	Abreviews	Notes
WB		1/500 - 1/5000. Detects a band of approximately 65 kDa (predicted molecular weight: 65 kDa).
ICC/IF		1/50 - 1/200.
IHC-P		1/20 - 1/200.

Target

Function

Regulatory subunit of protein phosphatase 1 (PP1c) that acts as a M-Ras/MRAS effector and participates in MAPK pathway activation. Upon M-Ras/MRAS activation, targets PP1c to specifically dephosphorylate the 'Ser-259' inhibitory site of RAF1 kinase and stimulate RAF1 activity at specialized signaling complexes.

Involvement in disease

Defects in SHOC2 are the cause of Noonan syndrome-like with loose anagen hair (NSLAH) [MIM:607721]. NSLAH children display macrocephaly, high forehead, hypertelorism, palpebral ptosis, low-set and posteriorly rotated ears, short and webbed neck and pectus anomalies. Affected subjects also have easily pluckable, sparse, thin and slow-growing hair.

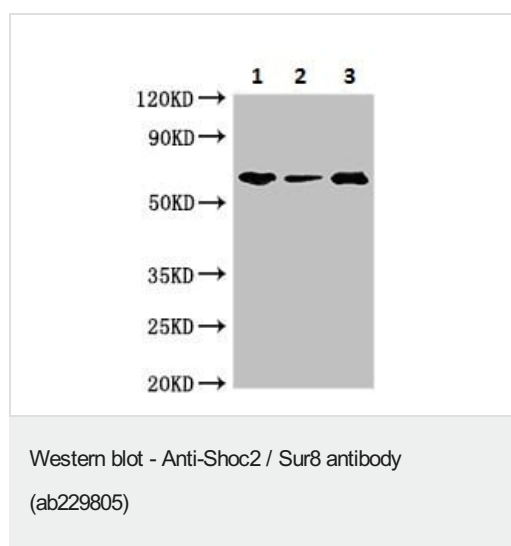
Sequence similarities

Belongs to the SHOC2 family.
Contains 20 LRR (leucine-rich) repeats.

Cellular localization

Cytoplasm. Nucleus. Translocates from cytoplasm to nucleus upon growth factor stimulation.

Images



All lanes : Anti-Shoc2 / Sur8 antibody (ab229805) at 1/500 dilution

Lane 1 : MCF7 (human breast adenocarcinoma cell line) whole cell lysate

Lane 2 : Jurkat (human T cell leukemia cell line from peripheral blood) whole cell lysate

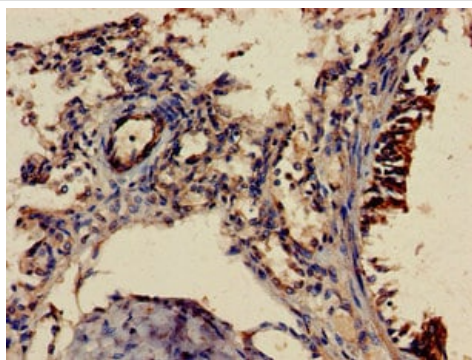
Lane 3 : HepG2 (human liver hepatocellular carcinoma cell line) whole cell lysate

Secondary

All lanes : Goat polyclonal to rabbit IgG at 1/50000 dilution

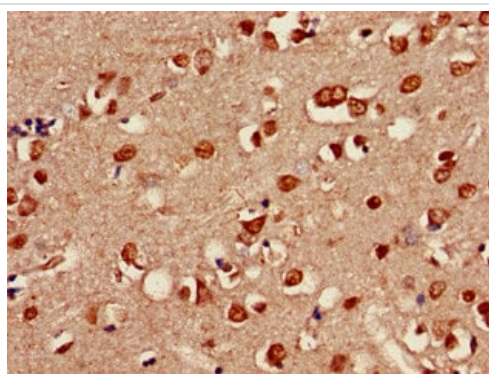
Predicted band size: 65 kDa

Observed band size: 65 kDa



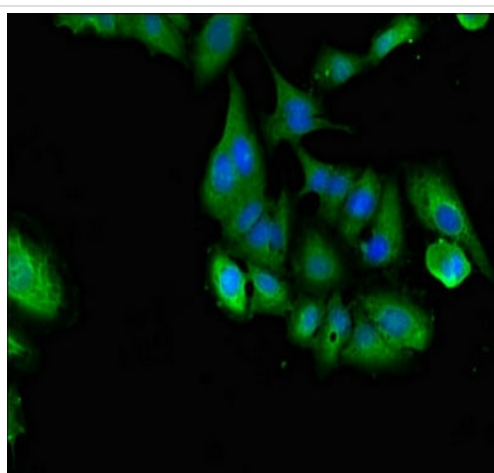
Immunohistochemistry (Formalin/PFA-fixed paraffin-embedded sections) - Anti-Shoc2 / Sur8 antibody (ab229805)

Paraffin-embedded human lung tissue stained for Shoc2 / Sur8 with ab229805 at 1/100 dilution in immunohistochemical analysis.



Immunohistochemistry (Formalin/PFA-fixed paraffin-embedded sections) - Anti-Shoc2 / Sur8 antibody (ab229805)

Paraffin-embedded human brain tissue stained for Shoc2 / Sur8 with ab229805 at 1/100 dilution in immunohistochemical analysis.



Immunocytochemistry/ Immunofluorescence - Anti-Shoc2 / Sur8 antibody (ab229805)

HeLa (human epithelial cell line from cervix adenocarcinoma) cells stained for Shoc2 / Sur8 (green) using ab229805 at 1/100 dilution in ICC/IF, followed by Alexa Fluor 488[®] conjugated Goat Anti-Rabbit IgG (H+L).

Please note: All products are "FOR RESEARCH USE ONLY. NOT FOR USE IN DIAGNOSTIC PROCEDURES"

Our Abpromise to you: Quality guaranteed and expert technical support

- Replacement or refund for products not performing as stated on the datasheet
- Valid for 12 months from date of delivery
- Response to your inquiry within 24 hours

- We provide support in Chinese, English, French, German, Japanese and Spanish
- Extensive multi-media technical resources to help you
- We investigate all quality concerns to ensure our products perform to the highest standards

If the product does not perform as described on this datasheet, we will offer a refund or replacement. For full details of the Abpromise, please visit <https://www.abcam.com/abpromise> or contact our technical team.

Terms and conditions

- Guarantee only valid for products bought direct from Abcam or one of our authorized distributors