



Product datasheet

Anti-SHP1 (phospho Y536) antibody ab131500

[4 References](#) [2 Images](#)

Overview

Product name	Anti-SHP1 (phospho Y536) antibody
Description	Rabbit polyclonal to SHP1 (phospho Y536)
Host species	Rabbit
Tested applications	Suitable for: IHC-P, ICC/IF
Species reactivity	Reacts with: Human
Immunogen	Synthetic peptide corresponding to Human SHP1 (phospho Y536) conjugated to keyhole limpet haemocyanin. Database link: NP_002822.2
	 Run BLAST with  Run BLAST with
Positive control	HeLa cells; Human breast carcinoma tissue.
General notes	<p>The Life Science industry has been in the grips of a reproducibility crisis for a number of years. Abcam is leading the way in addressing this with our range of recombinant monoclonal antibodies and knockout edited cell lines for gold-standard validation. Please check that this product meets your needs before purchasing.</p> <p>If you have any questions, special requirements or concerns, please send us an inquiry and/or contact our Support team ahead of purchase. Recommended alternatives for this product can be found below, along with publications, customer reviews and Q&As</p>

Properties

Form	Liquid
Storage instructions	Shipped at 4°C. Store at -20°C. Stable for 12 months at -20°C.
Storage buffer	pH: 7.40 Preservative: 0.02% Sodium azide Constituents: 49% PBS, 50% Glycerol (glycerin, glycerine), 0.88% Sodium chloride
	PBS without Mg ²⁺ and Ca ²⁺
Purity	Immunogen affinity purified
Purification notes	ab131500 was purified by affinity chromatography using epitope specific phosphopeptide. Non-phosphospecific antibodies were removed by chromatography using non-phosphopeptide.
Clonality	Polyclonal

Isotype

IgG

Applications

The Abpromise guarantee

Our **Abpromise guarantee** covers the use of ab131500 in the following tested applications.

The application notes include recommended starting dilutions; optimal dilutions/concentrations should be determined by the end user.

Application	Abreviews	Notes
IHC-P		1/50 - 1/100.
ICC/IF		1/100 - 1/200.

Target

Function

Plays a key role in hematopoiesis. This PTPase activity may directly link growth factor receptors and other signaling proteins through protein-tyrosine phosphorylation. The SH2 regions may interact with other cellular components to modulate its own phosphatase activity against interacting substrates. Together with MTUS1, induces UBE2V2 expression upon angiotensin II stimulation.

Tissue specificity

Isoform 1 is expressed in hematopoietic cells. Isoform 2 is expressed in non-hematopoietic cells.

Sequence similarities

Belongs to the protein-tyrosine phosphatase family. Non-receptor class 2 subfamily.
Contains 2 SH2 domains.
Contains 1 tyrosine-protein phosphatase domain.

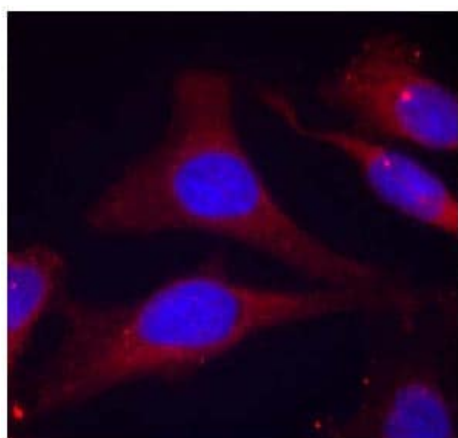
Post-translational modifications

Phosphorylated on serine and tyrosine residues.

Cellular localization

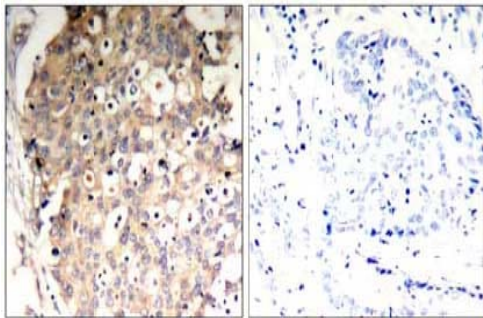
Cytoplasm. Nucleus. In neurons, translocates into the nucleus after treatment with angiotensin II.

Images



Immunofluorescent analysis of methanol-fixed HeLa cells labelling SHP1 (phospho Y536) with ab131500 at 1/100 dilution.

Immunocytochemistry/ Immunofluorescence - Anti-SHP1 (phospho Y536) antibody (ab131500)



Immunohistochemistry (Formalin/PFA-fixed paraffin-embedded sections) - Anti-SHP1 (phospho Y536) antibody (ab131500)

Immunohistochemical analysis of paraffin-embedded Human breast carcinoma tissue labelling SHP1 (phospho Y536) with ab131500 at 1/50 dilution (left) or ab131500 preincubated with blocking peptide (right).

Please note: All products are "FOR RESEARCH USE ONLY. NOT FOR USE IN DIAGNOSTIC PROCEDURES"

Our Abpromise to you: Quality guaranteed and expert technical support

- Replacement or refund for products not performing as stated on the datasheet
- Valid for 12 months from date of delivery
- Response to your inquiry within 24 hours
- We provide support in Chinese, English, French, German, Japanese and Spanish
- Extensive multi-media technical resources to help you
- We investigate all quality concerns to ensure our products perform to the highest standards

If the product does not perform as described on this datasheet, we will offer a refund or replacement. For full details of the Abpromise, please visit <https://www.abcam.com/abpromise> or contact our technical team.

Terms and conditions

- Guarantee only valid for products bought direct from Abcam or one of our authorized distributors