

Anti-SHPRH antibody ab80129

★★★★★ [2 Abreviews](#) [3 References](#) [3 Images](#)

Overview

Product name	Anti-SHPRH antibody
Description	Rabbit polyclonal to SHPRH
Host species	Rabbit
Tested applications	Suitable for: ICC/IF, WB
Species reactivity	Reacts with: Human
Immunogen	Synthetic peptide corresponding to Human SHPRH aa 600-700 conjugated to keyhole limpet haemocyanin. (Peptide available as ab89391)
Positive control	This antibody gave a positive signal in SHSY-5Y whole cell lysate.
General notes	<p>The Life Science industry has been in the grips of a reproducibility crisis for a number of years. Abcam is leading the way in addressing this with our range of recombinant monoclonal antibodies and knockout edited cell lines for gold-standard validation. Please check that this product meets your needs before purchasing.</p> <p>If you have any questions, special requirements or concerns, please send us an inquiry and/or contact our Support team ahead of purchase. Recommended alternatives for this product can be found below, along with publications, customer reviews and Q&As</p>

Properties

Form	Liquid
Storage instructions	Shipped at 4°C. Store at +4°C short term (1-2 weeks). Upon delivery aliquot. Store at -20°C or -80°C. Avoid freeze / thaw cycle.
Storage buffer	pH: 7.40 Preservative: 0.02% Sodium azide Constituent: PBS
Purity	Immunogen affinity purified
Clonality	Polyclonal

Batches of this product that have a concentration < 1mg/ml may have BSA added as a stabilising agent. If you would like information about the formulation of a specific lot, please contact our scientific support team who will be happy to help.

Isotype

IgG

Applications

The Abpromise guarantee

Our **Abpromise guarantee** covers the use of ab80129 in the following tested applications.

The application notes include recommended starting dilutions; optimal dilutions/concentrations should be determined by the end user.

Application	Abreviews	Notes
ICC/IF		Use a concentration of 5 µg/ml.
WB	★★★★★ (2)	Use a concentration of 1 µg/ml. Detects a band of approximately 193 kDa (predicted molecular weight: 193 kDa).

Target

Function

E3 ubiquitin-protein ligase involved in DNA repair. Upon genotoxic stress, accepts ubiquitin from the UBE2N-UBE2V2 E2 complex and transfers it to 'Lys-164' of PCNA which had been monoubiquitinated by UBE2A/B-RAD18, promoting the formation of non-canonical poly-ubiquitin chains linked through 'Lys-63'.

Tissue specificity

Broadly expressed.

Pathway

Protein modification; protein ubiquitination.

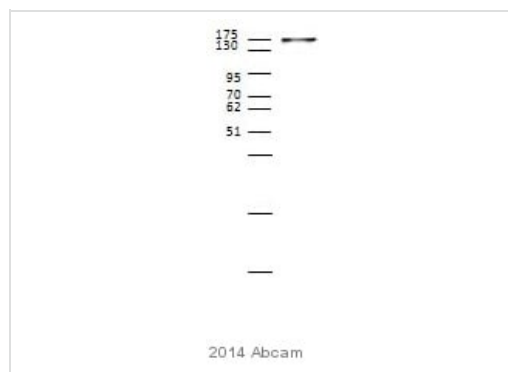
Sequence similarities

Belongs to the SNF2/RAD54 helicase family.
Contains 1 H15 (linker histone H1/H5 globular) domain.
Contains 1 helicase ATP-binding domain.
Contains 1 helicase C-terminal domain.
Contains 1 PHD-type zinc finger.
Contains 1 RING-type zinc finger.

Domain

The RING finger mediates E3 ubiquitin ligase activity.

Images



Western blot - Anti-SHPRH antibody (ab80129)

This image is courtesy of an anonymous Abreview

Anti-SHPRH antibody (ab80129) at 1/1000 dilution + HEK293 whole cell lysate at 50 µg

Secondary

HRP-conjugated goat anti-rabbit IgG polyclonal at 1/10000 dilution

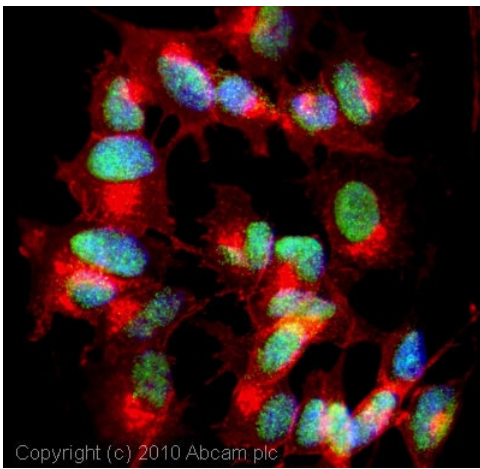
Developed using the ECL technique.

Performed under reducing conditions.

Predicted band size: 193 kDa

Observed band size: 175 kDa

Exposure time: 5 minutes



Immunocytochemistry/ Immunofluorescence - Anti-SHPRH antibody (ab80129)

ICC/IF image of ab80129 stained SHSY5Y cells. The cells were 4% formaldehyde fixed (10 min) and then incubated in 1%BSA / 10% normal goat serum / 0.3M glycine in 0.1% PBS-Tween for 1h to permeabilise the cells and block non-specific protein-protein interactions. The cells were then incubated with the antibody (ab80129, 5µg/ml) overnight at +4°C. The secondary antibody (green) was Alexa Fluor® 488 goat anti-rabbit IgG (H+L) used at a 1/1000 dilution for 1h. Alexa Fluor® 594 WGA was used to label plasma membranes (red) at a 1/200 dilution for 1h. DAPI was used to stain the cell nuclei (blue) at a concentration of 1.43µM. This antibody also gave a positive result in 100% methanol fixed (5 min) SHSY5Y cells at 5µg/ml.



Western blot - Anti-SHPRH antibody (ab80129)

Anti-SHPRH antibody (ab80129) at 1 µg/ml + SHSY-5Y (Human neuroblastoma cell line) Whole Cell Lysate at 10 µg

Secondary

Goat polyclonal to Rabbit IgG - H&L - Pre-Adsorbed (HRP) at 1/3000 dilution

Developed using the ECL technique.

Performed under reducing conditions.

Predicted band size: 193 kDa

Observed band size: 104,193 kDa

Additional bands at: 172 kDa. We are unsure as to the identity of these extra bands.

Exposure time: 5 minutes

This antibody was raised against an immunogen that is predicted to recognize isoforms (1,2,3,4 and 5) of E3 ubiquitin-protein ligase SHPRH. The predicted molecular weights of isoforms (1,2,3,4 and 5) are 193 kDa, 104kDa, 17 kDa, 190 kDa and 122 kDa respectively.

Please note: All products are "FOR RESEARCH USE ONLY. NOT FOR USE IN DIAGNOSTIC PROCEDURES"

Our Abpromise to you: Quality guaranteed and expert technical support

- Replacement or refund for products not performing as stated on the datasheet
- Valid for 12 months from date of delivery
- Response to your inquiry within 24 hours

- We provide support in Chinese, English, French, German, Japanese and Spanish
- Extensive multi-media technical resources to help you
- We investigate all quality concerns to ensure our products perform to the highest standards

If the product does not perform as described on this datasheet, we will offer a refund or replacement. For full details of the Abpromise, please visit <https://www.abcam.com/abpromise> or contact our technical team.

Terms and conditions

- Guarantee only valid for products bought direct from Abcam or one of our authorized distributors