



## Product datasheet

### Anti-SIGIRR antibody ab233146

[1 References](#) [6 Images](#)

#### Overview

<b>Product name</b>	Anti-SIGIRR antibody
<b>Description</b>	Rabbit polyclonal to SIGIRR
<b>Host species</b>	Rabbit
<b>Tested applications</b>	<b>Suitable for:</b> WB, IHC-P
<b>Species reactivity</b>	<b>Reacts with:</b> Human, Pig
<b>Immunogen</b>	Recombinant fragment (His-tag) corresponding to Human SIGIRR aa 1-150. Expressed in E.coli. N-terminal tag. Database link: <a href="#">Q6IA17</a>
	 <a href="#">Run BLAST with</a>  <a href="#">Run BLAST with</a>
<b>Positive control</b>	IHC-P: Human breast cancer, liver, prostate and prostate cancer tissue. WB: Pig kidney lysate; Recombinant human SIGIRR protein.
<b>General notes</b>	<p>The Life Science industry has been in the grips of a reproducibility crisis for a number of years. Abcam is leading the way in addressing this with our range of recombinant monoclonal antibodies and knockout edited cell lines for gold-standard validation. Please check that this product meets your needs before purchasing.</p> <p>If you have any questions, special requirements or concerns, please send us an inquiry and/or contact our Support team ahead of purchase. Recommended alternatives for this product can be found below, along with publications, customer reviews and Q&amp;As</p>

#### Properties

<b>Form</b>	Liquid
<b>Storage instructions</b>	Shipped at 4°C. Store at +4°C short term (1-2 weeks). Upon delivery aliquot. Store at -20°C long term. Avoid freeze / thaw cycle.
<b>Storage buffer</b>	pH: 7.40 Preservative: 0.02% Sodium azide Constituents: 44.12% PBS, 55.77% Glycerol (glycerin, glycerine)
<b>Purity</b>	Immunogen affinity purified
<b>Purification notes</b>	Antigen-specific affinity chromatography followed by Protein A affinity chromatography.
<b>Clonality</b>	Polyclonal
<b>Isotype</b>	IgG

## Applications

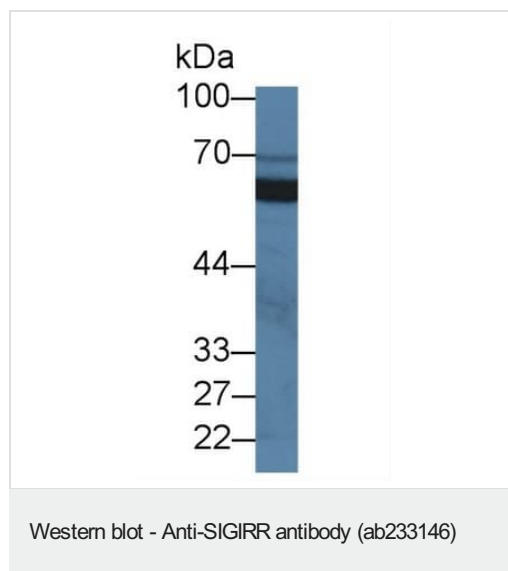
**The Abpromise guarantee** Our **Abpromise guarantee** covers the use of ab233146 in the following tested applications. The application notes include recommended starting dilutions; optimal dilutions/concentrations should be determined by the end user.

Application	Abreviews	Notes
WB		Use a concentration of 0.2 - 2 µg/ml.
IHC-P		Use a concentration of 5 - 20 µg/ml.

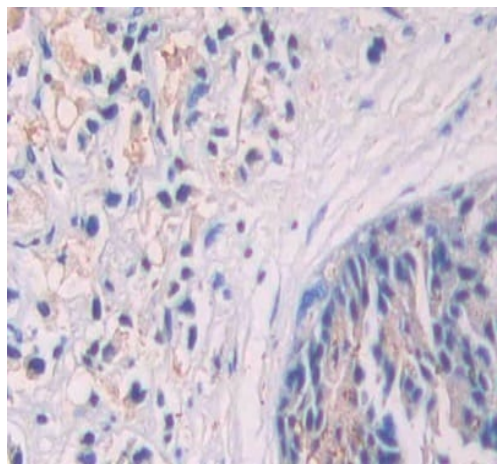
## Target

<b>Function</b>	Acts as a negative regulator of the Toll-like and IL-1R receptor signaling pathways. Attenuates the recruitment of receptor-proximal signaling components to the TLR4 receptor, probably through an TIR-TIR domain interaction with TLR4. Through its extracellular domain interferes with the heterodimerization of IL1R1 and IL1RAP.
<b>Tissue specificity</b>	Mainly expressed in epithelial tissues such as kidney, lung and gut.
<b>Sequence similarities</b>	Belongs to the interleukin-1 receptor family. Contains 1 Ig-like C2-type (immunoglobulin-like) domain. Contains 1 TIR domain.
<b>Cellular localization</b>	Membrane.

## Images



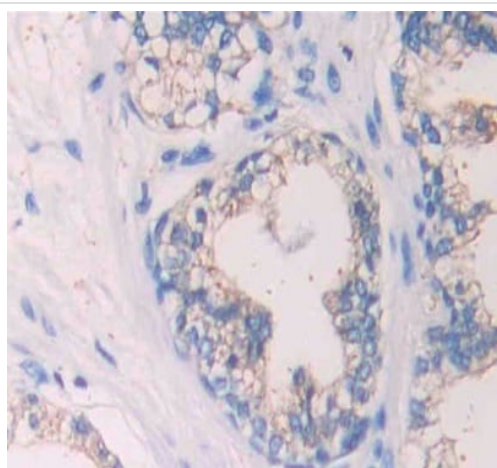
Anti-SIGIRR antibody (ab233146) at 2 µg/ml + Pig kidney lysate



Immunohistochemistry (Formalin/PFA-fixed paraffin-embedded sections) - Anti-SIGIRR antibody (ab233146)

Formalin-fixed, paraffin-embedded human prostate cancer tissue stained for SIGIRR using ab233146 at 30 µg/ml in immunohistochemical analysis.

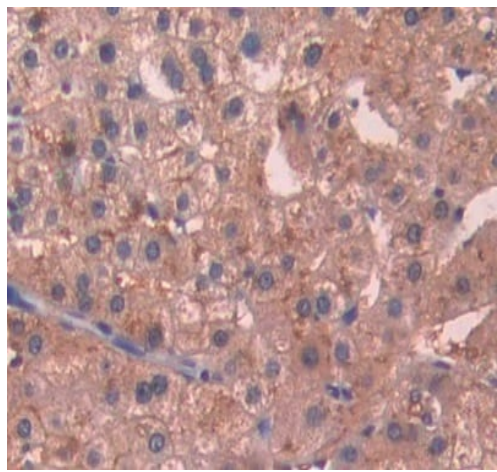
Secondary used HRP-Linked Goat anti-Rabbit IgG polyclonal at 2 µg/ml. DAB staining.



Immunohistochemistry (Formalin/PFA-fixed paraffin-embedded sections) - Anti-SIGIRR antibody (ab233146)

Formalin-fixed, paraffin-embedded human prostate tissue stained for SIGIRR using ab233146 at 30 µg/ml in immunohistochemical analysis.

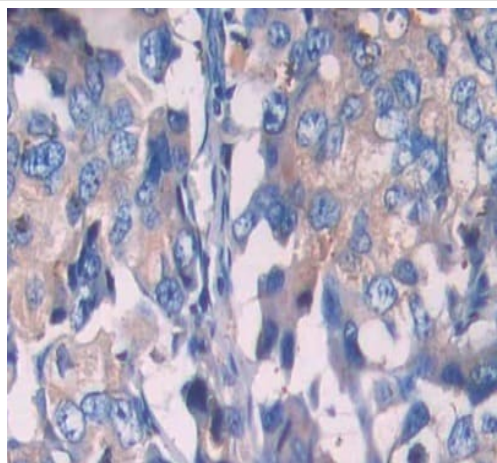
Secondary used HRP-Linked Goat anti-Rabbit IgG polyclonal at 2 µg/ml. DAB staining.



Immunohistochemistry (Formalin/PFA-fixed paraffin-embedded sections) - Anti-SIGIRR antibody (ab233146)

Formalin-fixed, paraffin-embedded human liver tissue stained for SIGIRR using ab233146 at 30  $\mu\text{g/ml}$  in immunohistochemical analysis.

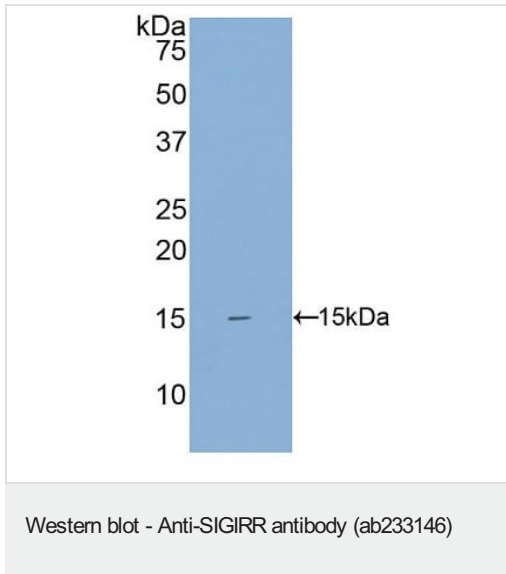
Secondary used HRP-Linked Goat anti-Rabbit IgG polyclonal at 2  $\mu\text{g/ml}$ . DAB staining.



Immunohistochemistry (Formalin/PFA-fixed paraffin-embedded sections) - Anti-SIGIRR antibody (ab233146)

Formalin-fixed, paraffin-embedded human breast cancer tissue stained for SIGIRR using ab233146 at 30  $\mu\text{g/ml}$  in immunohistochemical analysis.

Secondary used HRP-Linked Goat anti-Rabbit IgG polyclonal at 2  $\mu\text{g/ml}$ . DAB staining.



Anti-SIGIRR antibody (ab233146) at 2  $\mu$ g/ml + Recombinant human SIGIRR protein

**Please note:** All products are "FOR RESEARCH USE ONLY. NOT FOR USE IN DIAGNOSTIC PROCEDURES"

#### **Our Abpromise to you: Quality guaranteed and expert technical support**

---

- Replacement or refund for products not performing as stated on the datasheet
- Valid for 12 months from date of delivery
- Response to your inquiry within 24 hours
- We provide support in Chinese, English, French, German, Japanese and Spanish
- Extensive multi-media technical resources to help you
- We investigate all quality concerns to ensure our products perform to the highest standards

If the product does not perform as described on this datasheet, we will offer a refund or replacement. For full details of the Abpromise, please visit <https://www.abcam.com/abpromise> or contact our technical team.

#### **Terms and conditions**

---

- Guarantee only valid for products bought direct from Abcam or one of our authorized distributors