

Product datasheet

Anti-SIGLEC6 antibody ab199105

[2 Images](#)

Overview

Product name	Anti-SIGLEC6 antibody
Description	Rabbit polyclonal to SIGLEC6
Host species	Rabbit
Tested applications	Suitable for: IHC-P, WB
Species reactivity	Reacts with: Human
Immunogen	Synthetic peptide corresponding to Human SIGLEC6 aa 400 to the C-terminus. (Near the C terminal; NP_001171018) Database link: O43699-1 Run BLAST with Run BLAST with
Positive control	Human placenta tissue lysate; Human thyroid cancer tissue.
General notes	<p>The Life Science industry has been in the grips of a reproducibility crisis for a number of years. Abcam is leading the way in addressing this with our range of recombinant monoclonal antibodies and knockout edited cell lines for gold-standard validation. Please check that this product meets your needs before purchasing.</p> <p>If you have any questions, special requirements or concerns, please send us an inquiry and/or contact our Support team ahead of purchase. Recommended alternatives for this product can be found below, along with publications, customer reviews and Q&As</p>

Properties

Form	Liquid
Storage instructions	Shipped at 4°C. Store at +4°C short term (1-2 weeks). Upon delivery aliquot. Store at -20°C long term. Avoid freeze / thaw cycle.
Storage buffer	pH: 7.4 Preservative: 0.05% Sodium azide Constituents: 50% Glycerol (glycerin, glycerine), 49% PBS
Purity	Immunogen affinity purified
Clonality	Polyclonal
Isotype	IgG

Applications

The Abpromise guarantee Our **Abpromise guarantee** covers the use of ab199105 in the following tested applications.

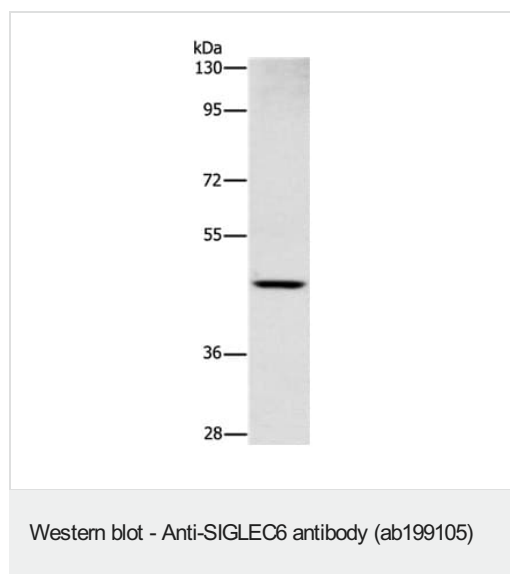
The application notes include recommended starting dilutions; optimal dilutions/concentrations should be determined by the end user.

Application	Abreviews	Notes
IHC-P		1/50 - 1/200.
WB		1/500 - 1/2000. Predicted molecular weight: 44, 50 kDa.

Target

Function	Putative adhesion molecule that mediates sialic-acid dependent binding to cells. Binds to alpha-2,6-linked sialic acid. The sialic acid recognition site may be masked by cis interactions with sialic acids on the same cell surface.
Tissue specificity	Expressed at high levels in placenta (cyto- and syncytiotrophoblastic cells) and at lower levels in spleen, peripheral blood leukocytes (predominantly B-cells) and small intestine.
Sequence similarities	Belongs to the immunoglobulin superfamily. SIGLEC (sialic acid binding Ig-like lectin) family. Contains 2 Ig-like C2-type (immunoglobulin-like) domains. Contains 1 Ig-like V-type (immunoglobulin-like) domain.
Domain	Contains 1 copy of a cytoplasmic motif that is referred to as the immunoreceptor tyrosine-based inhibitor motif (ITIM). This motif is involved in modulation of cellular responses. The phosphorylated ITIM motif can bind the SH2 domain of several SH2-containing phosphatases.
Cellular localization	Secreted and Cell membrane.

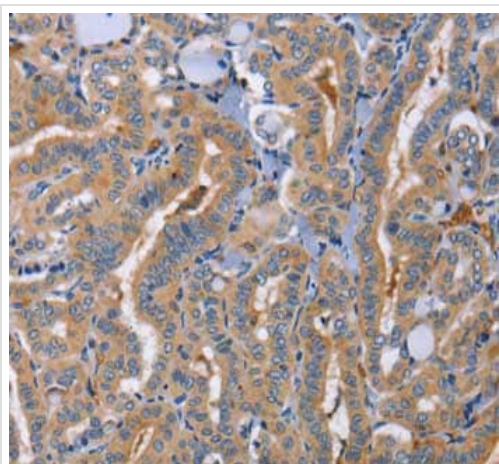
Images



Anti-SIGLEC6 antibody (ab199105) at 1/1000 dilution + Human placenta tissue lysate at 40 µg

Predicted band size: 44, 50 kDa

Gel: 8% SDS-PAGE.



Immunohistochemical analysis of paraffin-embedded Human thyroid cancer tissue labeling SIGLEC6 with ab199105 at 1/70 dilution.

Immunohistochemistry (Formalin/PFA-fixed paraffin-embedded sections) - Anti-SIGLEC6 antibody (ab199105)

Please note: All products are "FOR RESEARCH USE ONLY. NOT FOR USE IN DIAGNOSTIC PROCEDURES"

Our Abpromise to you: Quality guaranteed and expert technical support

- Replacement or refund for products not performing as stated on the datasheet
- Valid for 12 months from date of delivery
- Response to your inquiry within 24 hours
- We provide support in Chinese, English, French, German, Japanese and Spanish
- Extensive multi-media technical resources to help you
- We investigate all quality concerns to ensure our products perform to the highest standards

If the product does not perform as described on this datasheet, we will offer a refund or replacement. For full details of the Abpromise, please visit <https://www.abcam.com/abpromise> or contact our technical team.

Terms and conditions

- Guarantee only valid for products bought direct from Abcam or one of our authorized distributors