

Anti-Sigma 32 antibody ab26890

[1 Abreviews](#) [1 References](#) [1 Image](#)

Overview

Product name	Anti-Sigma 32 antibody
Description	Rabbit polyclonal to Sigma 32
Host species	Rabbit
Tested applications	Suitable for: WB
Species reactivity	Reacts with: Serratia marcescens
Immunogen	Full length Sigma 32 protein (Serratia marcescens)
General notes	<p>The Life Science industry has been in the grips of a reproducibility crisis for a number of years. Abcam is leading the way in addressing this with our range of recombinant monoclonal antibodies and knockout edited cell lines for gold-standard validation. Please check that this product meets your needs before purchasing.</p> <p>If you have any questions, special requirements or concerns, please send us an inquiry and/or contact our Support team ahead of purchase. Recommended alternatives for this product can be found below, along with publications, customer reviews and Q&As</p>

Properties

Form	Lyophilized: Add 100ul sterile water.
Storage instructions	Shipped at 4°C. Store at +4°C short term (1-2 weeks). Upon delivery aliquot. Store at -20°C or -80°C. Avoid freeze / thaw cycle.
Purity	Protein A purified
Clonality	Polyclonal
Isotype	IgG

Applications

The Abpromise guarantee Our **Abpromise guarantee** covers the use of ab26890 in the following tested applications. The application notes include recommended starting dilutions; optimal dilutions/concentrations should be determined by the end user.

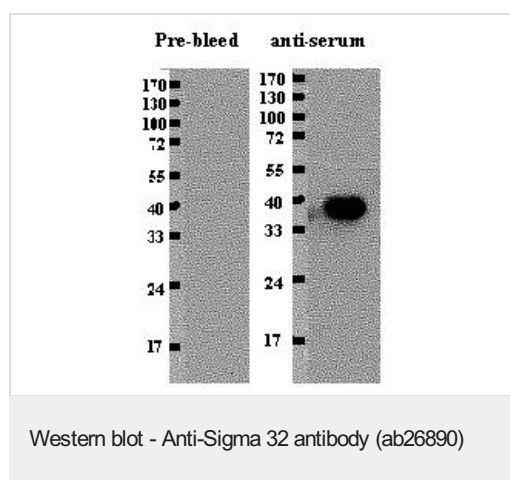
Application	Abreviews	Notes
WB		1/2000. Detects a band of approximately 38 kDa (predicted molecular weight: 32 kDa).

Target

Relevance

When cells are exposed to stresses such as heat or ethanol, a set of well-conserved heat shock proteins (HSPs) are rapidly induced. Induction of HSPs is controlled primarily at the level of transcription. In *Serratia marcescens*, expression of HSPs is positively regulated by a heat shock transcription factor-sigma 32 encoded by the *rpoH* gene. The rPOH protein plays a major role in regulation of the heat shock response by enhancing transcription of the heat shock genes.

Images



Lane 1 : Pre-bleed at 1/2000 dilution

Lane 2 : Anti-serum at 1/2000 dilution

All lanes : Antigen

Lysates/proteins at 4 µg per lane.

Secondary

All lanes : anti-rabbit IgG-HRP

Developed using the ECL technique.

Predicted band size: 32 kDa

Observed band size: 38 kDa

Please note: All products are "FOR RESEARCH USE ONLY. NOT FOR USE IN DIAGNOSTIC PROCEDURES"

Our Abpromise to you: Quality guaranteed and expert technical support

- Replacement or refund for products not performing as stated on the datasheet
- Valid for 12 months from date of delivery
- Response to your inquiry within 24 hours
- We provide support in Chinese, English, French, German, Japanese and Spanish
- Extensive multi-media technical resources to help you
- We investigate all quality concerns to ensure our products perform to the highest standards

If the product does not perform as described on this datasheet, we will offer a refund or replacement. For full details of the Abpromise,

please visit <https://www.abcam.com/abpromise> or contact our technical team.

Terms and conditions

- Guarantee only valid for products bought direct from Abcam or one of our authorized distributors