


Product datasheet

Anti-SIK1 (phospho T182) + SIK2 (phospho T175) + SIK3 (phospho T163) antibody [EPR19196] ab199474

Recombinant RabMAb

★★★★★ [3 Abreviews](#) [1 References](#) [5 Images](#)

Overview

Product name	Anti-SIK1 (phospho T182) + SIK2 (phospho T175) + SIK3 (phospho T163) antibody [EPR19196]
Description	Rabbit monoclonal [EPR19196] to SIK1 (phospho T182) + SIK2 (phospho T175) + SIK3 (phospho T163)
Host species	Rabbit
Specificity	Expected to react with Snf1lk (when phosphorylated at T182) and SIK3 ((when phosphorylated at T163).
Tested applications	Suitable for: Dot blot, WB
Species reactivity	Reacts with: Recombinant fragment Predicted to work with: Human 
Immunogen	Synthetic peptide. This information is proprietary to Abcam and/or its suppliers.
Positive control	WB: HEK-293T transfected with human Snf1lk or Snf1lk2 or SIK3 (WT) whole cell lysate.
General notes	This product is a recombinant monoclonal antibody, which offers several advantages including: <ul style="list-style-type: none">- High batch-to-batch consistency and reproducibility- Improved sensitivity and specificity- Long-term security of supply- Animal-free production For more information see here . Our RabMAb [®] technology is a patented hybridoma-based technology for making rabbit monoclonal antibodies. For details on our patents, please refer to RabMAb[®] patents .

Properties

Form	Liquid
Storage instructions	Shipped at 4°C. Store at +4°C short term (1-2 weeks). Upon delivery aliquot. Store at -20°C long term. Avoid freeze / thaw cycle.
Storage buffer	pH: 7.2 Preservative: 0.01% Sodium azide Constituents: 59% PBS, 40% Glycerol (glycerin, glycerine), 0.05% BSA

Purity	Protein A purified
Clonality	Monoclonal
Clone number	EPR19196
Isotype	IgG

Applications

The Abpromise guarantee Our **Abpromise guarantee** covers the use of ab199474 in the following tested applications.

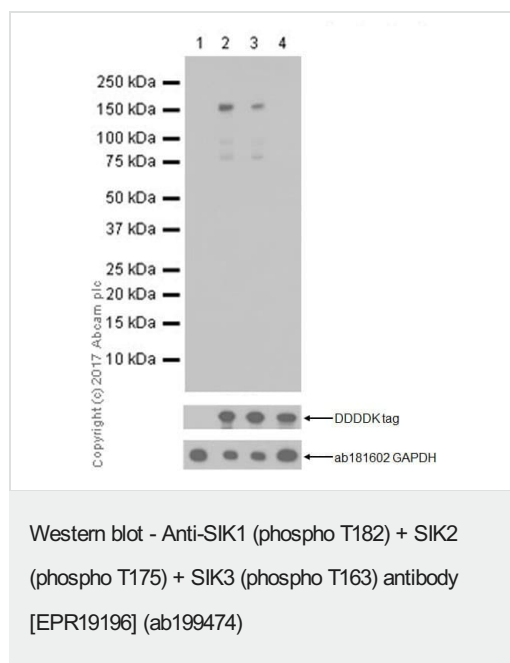
The application notes include recommended starting dilutions; optimal dilutions/concentrations should be determined by the end user.

Application	Abreviews	Notes
Dot blot		1/1000.
WB	★★★★★ (3)	1/1000. Detects a band of approximately 85, 104, 140 kDa.

Target

Cellular localization Snf1lk: Cytoplasm. Nucleus. Translocates to the cytoplasm on phosphorylation where it binds binding to YWHAZ. Snf1lk2: Cytoplasm. SIK3: Cytoplasm

Images



All lanes : Anti-SIK1 (phospho T182) + SIK2 (phospho T175) + SIK3 (phospho T163) antibody [EPR19196] (ab199474) at 1/1000 dilution

Lane 1 : HEK-293T (human epithelial cell line from embryonic kidney transformed with large T antigen) transfected with empty vector (control), whole cell lysate

Lane 2 : HEK-293T transfected with a human SIK3 (WT) expression vector, whole cell lysate

Lane 3 : HEK-293T transfected with a human SIK3 (WT) expression vector, then treated with alkaline phosphatase for 1 hour, whole cell lysate

Lane 4 : HEK-293T transfected with a human SIK3 T163A mutant expression vector, whole cell lysate

Lysates/proteins at 10 µg per lane.

Secondary

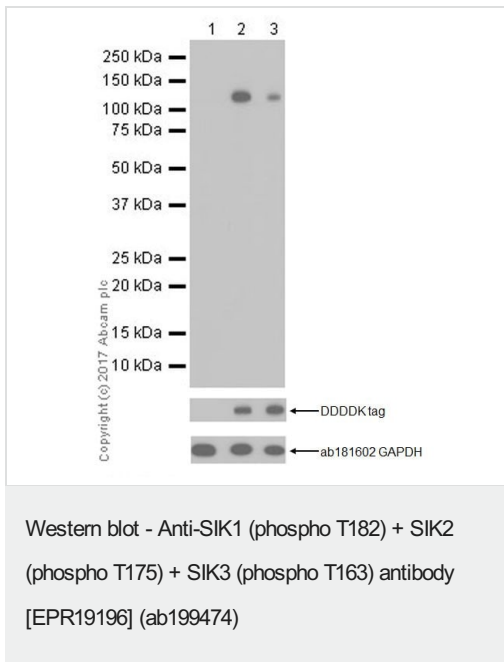
All lanes : Goat Anti-Rabbit IgG H&L (HRP) (**ab97051**) at 1/100000 dilution

Observed band size: 140 kDa

Exposure time: 1 minute

Blocking and dilution buffer and concentration: 5% NFDN/TBST.

The plasmids were kindly provided by our collaborator Dr. Yi Rao, Peking University.



All lanes : Anti-SIK1 (phospho T182) + SIK2 (phospho T175) + SIK3 (phospho T163) antibody [EPR19196] (ab199474) at 1/1000 dilution

Lane 1 : HEK-293T (human epithelial cell line from embryonic kidney transformed with large T antigen) transfected with an empty vector (control), whole cell lysate

Lane 2 : HEK-293T transfected with a human SIK2 (WT) expression vector, whole cell lysate

Lane 3 : HEK-293T transfected with a human SIK2 (WT) expression vector, then treated with alkaline phosphatase for 1 hour, whole cell lysate

Lysates/proteins at 10 µg per lane.

Secondary

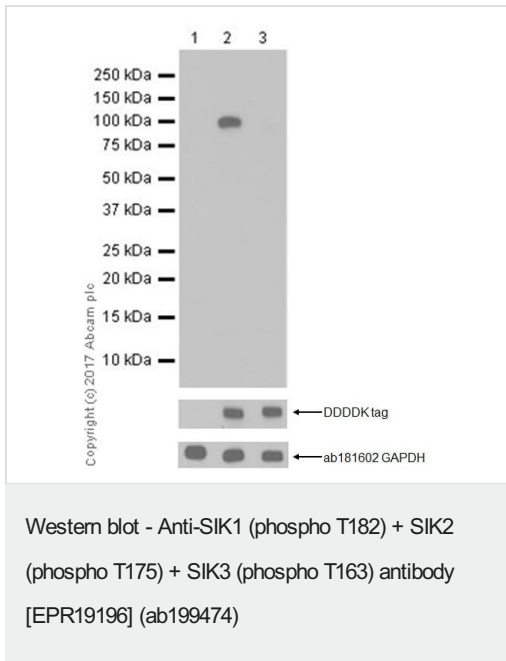
All lanes : Goat Anti-Rabbit IgG H&L (HRP) ([ab97051](#)) at 1/20000 dilution

Observed band size: 104 kDa

Exposure time: 30 seconds

Blocking and dilution buffer and concentration: 5% NFDN/TBST.

The plasmids were kindly provided by our collaborator Dr. Yi Rao, Peking University.



All lanes : Anti-SIK1 (phospho T182) + SIK2 (phospho T175) + SIK3 (phospho T163) antibody [EPR19196] (ab199474) at 1/5000 dilution

Lane 1 : HEK-293T (human epithelial cell line from embryonic kidney transformed with large T antigen) transfected with an empty vector (control), whole cell lysate

Lane 2 : HEK-293T transfected with a human SIK1 (WT) expression vector, whole cell lysate

Lane 3 : HEK-293T transfected with a human SIK1 (WT) expression vector, then treated with alkaline phosphatase for 1 hour, whole cell lysate

Lysates/proteins at 10 µg per lane.

Secondary

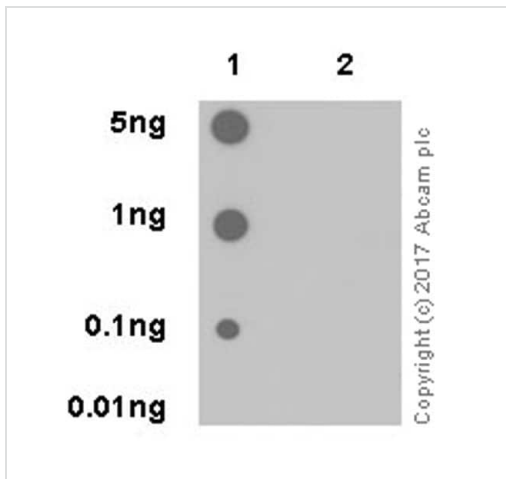
All lanes : Goat Anti-Rabbit IgG H&L (HRP) ([ab97051](#)) at 1/100000 dilution

Observed band size: 85 kDa

Exposure time: 3 minutes

Blocking and dilution buffer and concentration: 5% NFD/MTBST.

The plasmids were kindly provided by our collaborator Dr. Yi Rao, Peking University.



Dot blot analysis of Snf1lk2 (phospho T175) labeled with ab199474 at 1/1,000 dilution.

Lane 1: Snf1lk2 (phospho T175) peptide

Lane 2: Snf1lk2 non-phospho peptide





Goat Anti-Rabbit IgG H&L (HRP) ([ab97051](#)) at 1/100,000 dilution was used as secondary antibody.

Blocking/Dilution buffer: 5% NFDm/TBST.

Exposure time: 3 minutes.

Dot Blot - Anti-SIK1 (phospho T182) + SIK2 (phospho T175) + SIK3 (phospho T163) antibody [EPR19196] (ab199474)

Why choose a recombinant antibody?

 <p>Research with confidence Consistent and reproducible results</p>	 <p>Long-term and scalable supply Recombinant technology</p>
 <p>Success from the first experiment Confirmed specificity</p>	 <p>Ethical standards compliant Animal-free production</p>

Anti-SIK1 (phospho T182) + SIK2 (phospho T175) + SIK3 (phospho T163) antibody [EPR19196] (ab199474)

Please note: All products are "FOR RESEARCH USE ONLY. NOT FOR USE IN DIAGNOSTIC PROCEDURES"

Our Abpromise to you: Quality guaranteed and expert technical support

- Replacement or refund for products not performing as stated on the datasheet
- Valid for 12 months from date of delivery
- Response to your inquiry within 24 hours
- We provide support in Chinese, English, French, German, Japanese and Spanish
- Extensive multi-media technical resources to help you
- We investigate all quality concerns to ensure our products perform to the highest standards

If the product does not perform as described on this datasheet, we will offer a refund or replacement. For full details of the Abpromise,

please visit <https://www.abcam.com/abpromise> or contact our technical team.

Terms and conditions

- Guarantee only valid for products bought direct from Abcam or one of our authorized distributors