


Product datasheet

Anti-SIL1 antibody ab228868

3 Images

Overview

Product name	Anti-SIL1 antibody
Description	Rabbit polyclonal to SIL1
Host species	Rabbit
Tested applications	Suitable for: IHC-P, WB
Species reactivity	Reacts with: Rat, Human Predicted to work with: Mouse, Cow, Chimpanzee 
Immunogen	Recombinant fragment within Human SIL1 (internal sequence). The exact sequence is proprietary. Database link: Q9H173
Positive control	WB: Rat liver tissue extract; A431 whole cell lysate. IHC-P: Human colon carcinoma tissue.
General notes	<p>The Life Science industry has been in the grips of a reproducibility crisis for a number of years. Abcam is leading the way in addressing this with our range of recombinant monoclonal antibodies and knockout edited cell lines for gold-standard validation. Please check that this product meets your needs before purchasing.</p> <p>If you have any questions, special requirements or concerns, please send us an inquiry and/or contact our Support team ahead of purchase. Recommended alternatives for this product can be found below, along with publications, customer reviews and Q&As</p>

Properties

Form	Liquid
Storage instructions	Shipped at 4°C. Store at +4°C short term (1-2 weeks). Upon delivery aliquot. Store at -20°C long term. Avoid freeze / thaw cycle.
Storage buffer	pH: 7.00 Preservative: 0.01% Thimerosal (merthiolate) Constituents: 1.21% Tris, 0.75% Glycine, 20% Glycerol (glycerin, glycerine)
Purity	Immunogen affinity purified
Clonality	Polyclonal
Isotype	IgG

Applications

The Abpromise guarantee

Our **Abpromise guarantee** covers the use of ab228868 in the following tested applications.

The application notes include recommended starting dilutions; optimal dilutions/concentrations should be determined by the end user.

Application	Abreviews	Notes
IHC-P		1/100 - 1/1000.
WB		1/1000 - 1/10000. Predicted molecular weight: 52 kDa.

Target

Function

Required for protein translocation and folding in the endoplasmic reticulum (ER). Functions as a nucleotide exchange factor for the ER luminal chaperone HSPA5.

Tissue specificity

Highly expressed in tissues which produce large amounts of secreted proteins such as kidney, liver and placenta. Also expressed in colon, heart, lung, ovary, pancreas, peripheral leukocyte, prostate, spleen and thymus. Expressed at low levels throughout the brain.

Involvement in disease

Defects in SIL1 are a cause of Marinesco-Sjogren syndrome (MSS) [MIM:248800]. MSS is an autosomal recessive multisystem disorder which is characterized by cerebellar ataxia due to cerebellar atrophy, with Purkinje and granule cell loss and myopathy featuring marked muscle replacement with fat and connective tissue. Other cardinal features include bilateral cataracts, hypergonadotrophic hypogonadism and mild to severe mental retardation. Skeletal abnormalities, short stature, dysarthria, strabismus and nystagmus are also frequent findings. Mutational inactivation of this protein may result in ER stress-induced cell death signaling or malfunctioning chaperone machineries that mishandle client proteins which are critical for the organs targeted in MSS.

Sequence similarities

Belongs to the SIL1 family.

Developmental stage

Expressed in fetal kidney, fetal lung, fetal liver and at low levels in fetal brain.

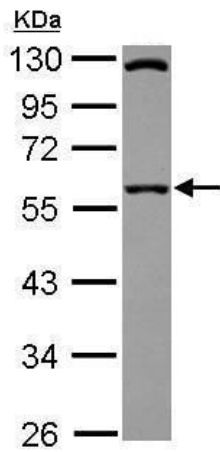
Post-translational modifications

N-glycosylated.

Cellular localization

Endoplasmic reticulum lumen.

Images

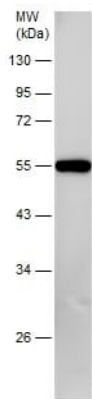


Western blot - Anti-SIL1 antibody (ab228868)

Anti-SIL1 antibody (ab228868) at 1/5000 dilution + A431 (human epidermoid carcinoma cell line) whole cell lysate at 30 µg

Predicted band size: 52 kDa

10% SDS-PAGE gel.

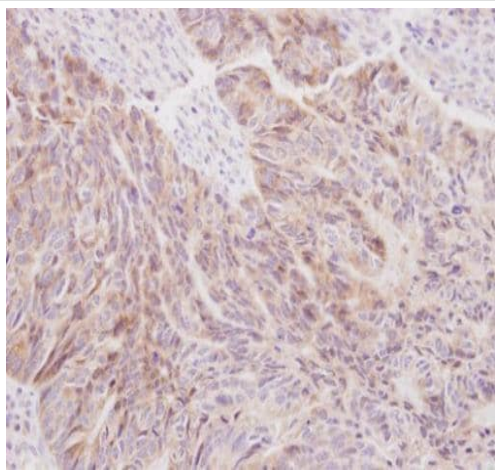


Western blot - Anti-SIL1 antibody (ab228868)

Anti-SIL1 antibody (ab228868) at 1/5000 dilution + Rat liver tissue extract at 50 µg

Predicted band size: 52 kDa

10% SDS-PAGE gel.



Immunohistochemistry (Formalin/PFA-fixed paraffin-embedded sections) - Anti-SIL1 antibody (ab228868)

Paraffin-embedded human colon carcinoma tissue stained for SIL1 using ab228868 at 1/250 dilution in immunohistochemical analysis.

Please note: All products are "FOR RESEARCH USE ONLY. NOT FOR USE IN DIAGNOSTIC PROCEDURES"

Our Abpromise to you: Quality guaranteed and expert technical support

- Replacement or refund for products not performing as stated on the datasheet
- Valid for 12 months from date of delivery
- Response to your inquiry within 24 hours

- We provide support in Chinese, English, French, German, Japanese and Spanish
- Extensive multi-media technical resources to help you
- We investigate all quality concerns to ensure our products perform to the highest standards

If the product does not perform as described on this datasheet, we will offer a refund or replacement. For full details of the Abpromise, please visit <https://www.abcam.com/abpromise> or contact our technical team.

Terms and conditions

- Guarantee only valid for products bought direct from Abcam or one of our authorized distributors