

## Product datasheet

# Anti-SIPA1L3 antibody ab91639

[2 Images](#)

### Overview

---

<b>Product name</b>	Anti-SIPA1L3 antibody
<b>Description</b>	Rabbit polyclonal to SIPA1L3
<b>Host species</b>	Rabbit
<b>Specificity</b>	Specific for SIPA1L3. Does not bind to other proteins of the SIPA1 family.
<b>Tested applications</b>	<b>Suitable for:</b> ICC/IF, WB
<b>Species reactivity</b>	<b>Reacts with:</b> Human
<b>Immunogen</b>	Synthetic peptide corresponding to 15 amino acid from the N terminal region of Human SIPA1L3 (NP_055888).
<b>Positive control</b>	Lysate from SK N SH Human neuroblastoma cell line.
<b>General notes</b>	<p>The Life Science industry has been in the grips of a reproducibility crisis for a number of years. Abcam is leading the way in addressing this with our range of recombinant monoclonal antibodies and knockout edited cell lines for gold-standard validation. Please check that this product meets your needs before purchasing.</p> <p>If you have any questions, special requirements or concerns, please send us an inquiry and/or contact our Support team ahead of purchase. Recommended alternatives for this product can be found below, along with publications, customer reviews and Q&amp;As</p>

### Properties

---

<b>Form</b>	Liquid
<b>Storage instructions</b>	Shipped at 4°C. Store at +4°C.
<b>Storage buffer</b>	pH: 7.2 Preservative: 0.02% Sodium azide Constituent: PBS
<b>Purity</b>	Immunogen affinity purified
<b>Clonality</b>	Polyclonal
<b>Isotype</b>	IgG

### Applications

---

## The Abpromise guarantee

Our **Abpromise guarantee** covers the use of ab91639 in the following tested applications.

The application notes include recommended starting dilutions; optimal dilutions/concentrations should be determined by the end user.

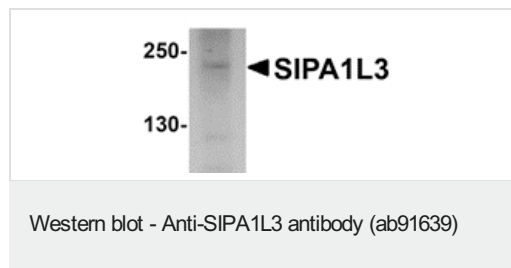
Application	Abreviews	Notes
ICC/IF		Use a concentration of 20 µg/ml.
WB		Use a concentration of 1 - 2 µg/ml. Predicted molecular weight: 194 kDa.

## Target

### Sequence similarities

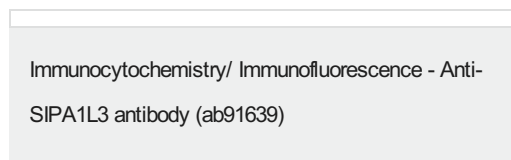
Contains 1 PDZ (DHR) domain.  
Contains 1 Rap-GAP domain.

## Images



Anti-SIPA1L3 antibody (ab91639) at 1 µg/ml + SK N SH cell lysate at 15 µg

**Predicted band size:** 194 kDa



Immunofluorescence of SIPA1L3 in Human Brain cells using ab91639 at 20 µg/ml.

**Please note:** All products are "FOR RESEARCH USE ONLY. NOT FOR USE IN DIAGNOSTIC PROCEDURES"

## Our Abpromise to you: Quality guaranteed and expert technical support

- Replacement or refund for products not performing as stated on the datasheet
- Valid for 12 months from date of delivery
- Response to your inquiry within 24 hours
- We provide support in Chinese, English, French, German, Japanese and Spanish
- Extensive multi-media technical resources to help you
- We investigate all quality concerns to ensure our products perform to the highest standards

If the product does not perform as described on this datasheet, we will offer a refund or replacement. For full details of the Abpromise, please visit <https://www.abcam.com/abpromise> or contact our technical team.

## Terms and conditions

- 
- Guarantee only valid for products bought direct from Abcam or one of our authorized distributors