

Product datasheet

Anti-SIRP alpha antibody ab53721

★★★★★ [1 Abreviews](#) [6 References](#) [3 Images](#)

Overview

Product name	Anti-SIRP alpha antibody
Description	Rabbit polyclonal to SIRP alpha
Host species	Rabbit
Specificity	Detects endogenous levels of total Sirp alpha1 protein.
Tested applications	Suitable for: WB, IHC-P, ICC/IF
Species reactivity	Reacts with: Human
Immunogen	Synthetic peptide corresponding to Human SIRP alpha aa 480-496. Sequence: CRTPKQPAPKPEPSFSEY Database link: P78324 (Peptide available as ab156313)

 [Run BLAST with](#)

 [Run BLAST with](#)

General notes

The Life Science industry has been in the grips of a reproducibility crisis for a number of years. Abcam is leading the way in addressing this with our range of recombinant monoclonal antibodies and knockout edited cell lines for gold-standard validation. Please check that this product meets your needs before purchasing.

If you have any questions, special requirements or concerns, please send us an inquiry and/or contact our Support team ahead of purchase. Recommended alternatives for this product can be found below, along with publications, customer reviews and Q&As

Properties

Form	Liquid
Storage instructions	Shipped at 4°C. Upon delivery aliquot and store at -20°C. Avoid freeze / thaw cycles.
Storage buffer	pH: 7 Preservative: 0.02% Sodium azide Constituents: 50% Glycerol, 0.87% Sodium chloride, PBS Without Mg+2 and Ca+2
Purity	Immunogen affinity purified

Clonality	Polyclonal
Isotype	IgG

Applications

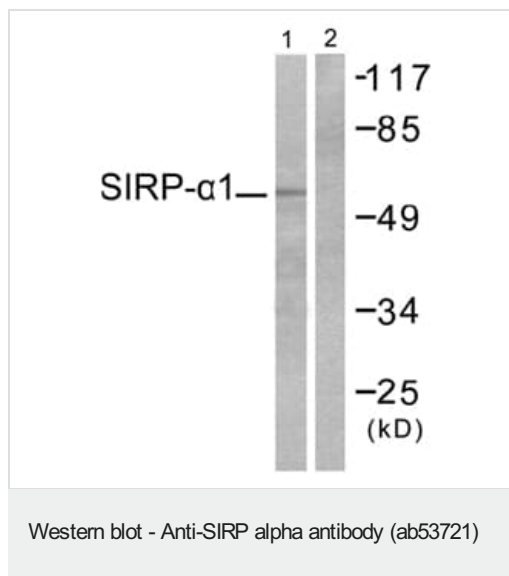
The Abpromise guarantee Our **Abpromise guarantee** covers the use of ab53721 in the following tested applications. The application notes include recommended starting dilutions; optimal dilutions/concentrations should be determined by the end user.

Application	Abreviews	Notes
WB	★★★★★ (1)	1/500 - 1/1000. Detects a band of approximately 56 kDa (predicted molecular weight: 56 kDa).
IHC-P		1/50 - 1/100.
ICC/IF		Use a concentration of 5 µg/ml.

Target

Function	Immunoglobulin-like cell surface receptor for CD47. Acts as docking protein and induces translocation of PTPN6, PTPN11 and other binding partners from the cytosol to the plasma membrane. Supports adhesion of cerebellar neurons, neurite outgrowth and glial cell attachment. May play a key role in intracellular signaling during synaptogenesis and in synaptic function (By similarity). Involved in the negative regulation of receptor tyrosine kinase-coupled cellular responses induced by cell adhesion, growth factors or insulin. Mediates negative regulation of phagocytosis, mast cell activation and dendritic cell activation. CD47 binding prevents maturation of immature dendritic cells and inhibits cytokine production by mature dendritic cells.
Tissue specificity	Ubiquitous. Highly expressed in brain. Detected on myeloid cells, but not T-cells. Detected at lower levels in heart, placenta, lung, testis, ovary, colon, liver, small intestine, prostate, spleen, kidney, skeletal muscle and pancreas.
Sequence similarities	Contains 2 Ig-like C1-type (immunoglobulin-like) domains. Contains 1 Ig-like V-type (immunoglobulin-like) domain.
Post-translational modifications	N-glycosylated. Phosphorylated on tyrosine residues in response to stimulation with EGF, growth hormone, insulin and PDGF. Dephosphorylated by PTPN11.
Cellular localization	Membrane.

Images



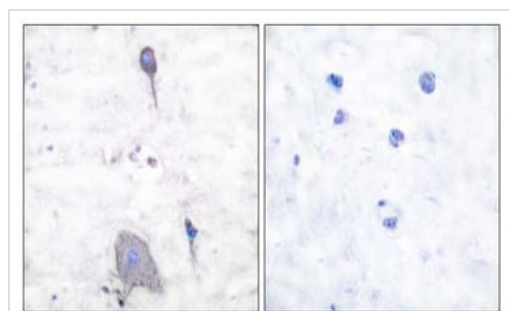
All lanes : Anti-SIRP alpha antibody (ab53721) at 1/500 dilution

Lane 1 : Extracts from HepG2 cells

Lane 2 : Extracts from HepG2 cells with immunizing peptide

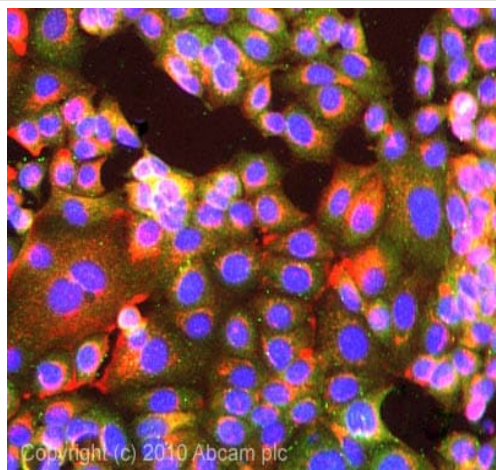
Predicted band size: 56 kDa

Observed band size: 56 kDa



Ab53721 at 1/50 dilution, staining paraffin embedded human brain, in the presence (right) and absence (left) of blocking peptide.

Immunohistochemistry (Formalin/PFA-fixed paraffin-embedded sections) - Anti-SIRP alpha antibody (ab53721)



Immunocytochemistry/ Immunofluorescence - Anti-SIRP alpha antibody (ab53721)

ICC/IF image of ab53721 stained Mcf7 cells. The cells were 100% methanol fixed (5 min) and then incubated in 1%BSA / 10% normal goat serum / 0.3M glycine in 0.1% PBS-Tween for 1h to permeabilise the cells and block non-specific protein-protein interactions. The cells were then incubated with the antibody (ab53721, 5µg/ml) overnight at +4°C. The secondary antibody (green) was Alexa Fluor® 488 goat anti-rabbit IgG (H+L) used at a 1/1000 dilution for 1h. Alexa Fluor® 594 WGA was used to label plasma membranes (red) at a 1/200 dilution for 1h. DAPI was used to stain the cell nuclei (blue) at a concentration of 1.43µM.

Please note: All products are "FOR RESEARCH USE ONLY. NOT FOR USE IN DIAGNOSTIC PROCEDURES"

Our Abpromise to you: Quality guaranteed and expert technical support

- Replacement or refund for products not performing as stated on the datasheet
- Valid for 12 months from date of delivery
- Response to your inquiry within 24 hours
- We provide support in Chinese, English, French, German, Japanese and Spanish
- Extensive multi-media technical resources to help you
- We investigate all quality concerns to ensure our products perform to the highest standards

If the product does not perform as described on this datasheet, we will offer a refund or replacement. For full details of the Abpromise, please visit <https://www.abcam.com/abpromise> or contact our technical team.

Terms and conditions

- Guarantee only valid for products bought direct from Abcam or one of our authorized distributors