

Product datasheet

Anti-SIX2 antibody [EPR4824] ab111827

Recombinant **RabMAb**

[2 References](#) [2 Images](#)

Overview

Product name	Anti-SIX2 antibody [EPR4824]
Description	Rabbit monoclonal [EPR4824] to SIX2
Host species	Rabbit
Tested applications	Suitable for: WB Unsuitable for: Flow Cyt, ICC/IF, IHC-P or IP
Species reactivity	Reacts with: Mouse, Rat, Human
Immunogen	Synthetic peptide. This information is proprietary to Abcam and/or its suppliers.
Positive control	Skeletal Muscle (Rat) Nuclear Lysate - normal tissue (ab29375) can be used as a positive control in WB. Human, Mouse and Rat skeletal muscle lysates; L6 lysate
General notes	<p>This product is a recombinant monoclonal antibody, which offers several advantages including:</p> <ul style="list-style-type: none"> - High batch-to-batch consistency and reproducibility - Improved sensitivity and specificity - Long-term security of supply - Animal-free production <p>For more information see here.</p> <p>Our RabMAb[®] technology is a patented hybridoma-based technology for making rabbit monoclonal antibodies. For details on our patents, please refer to RabMAb[®] patents.</p>

Properties

Form	Liquid
Storage instructions	Shipped at 4°C. Store at -20°C. Stable for 12 months at -20°C.
Storage buffer	<p>pH: 7.20</p> <p>Preservative: 0.05% Sodium azide</p> <p>Constituents: 0.1% BSA, 40% Glycerol (glycerin, glycerine), 9.85% Tris glycine, 50% Tissue culture supernatant</p>
Purity	Protein A purified
Clonality	Monoclonal
Clone number	EPR4824

Isotype

IgG

Applications

The Abpromise guarantee

Our **Abpromise guarantee** covers the use of ab111827 in the following tested applications.

The application notes include recommended starting dilutions; optimal dilutions/concentrations should be determined by the end user.

Application	Abreviews	Notes
WB		1/1000 - 1/10000. Predicted molecular weight: 32 kDa.

Application notes

Is unsuitable for Flow Cyt, ICC/IF, IHC-P or IP.

Target

Function

May be involved in limb tendon and ligament development.

Tissue specificity

Strongly expressed in skeletal muscle.

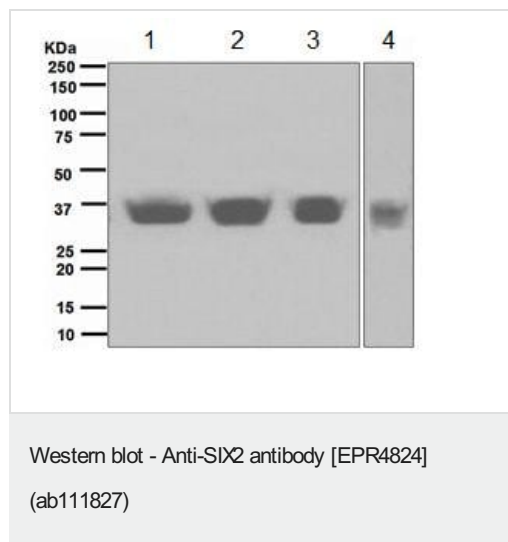
Sequence similarities

Belongs to the SIX/Sine oculis homeobox family.
Contains 1 homeobox DNA-binding domain.

Cellular localization

Nucleus.

Images



All lanes : Anti-SIX2 antibody [EPR4824] (ab111827) at 1/1000 dilution

Lane 1 : Human skeletal muscle lysate

Lane 2 : Mouse skeletal muscle lysate

Lane 3 : Rat skeletal muscle lysate

Lane 4 : L6 lysate

Lysates/proteins at 10 µg per lane.

Secondary

All lanes : HRP labelled goat anti-rabbit at 1/2000 dilution

Predicted band size: 32 kDa

Why choose a recombinant antibody?



Research with confidence
Consistent and reproducible results



Long-term and scalable supply
Recombinant technology



Success from the first experiment
Confirmed specificity



Ethical standards compliant
Animal-free production

Anti-SIX2 antibody [EPR4824] (ab111827)

Please note: All products are "FOR RESEARCH USE ONLY. NOT FOR USE IN DIAGNOSTIC PROCEDURES"

Our Abpromise to you: Quality guaranteed and expert technical support

- Replacement or refund for products not performing as stated on the datasheet
- Valid for 12 months from date of delivery
- Response to your inquiry within 24 hours
- We provide support in Chinese, English, French, German, Japanese and Spanish
- Extensive multi-media technical resources to help you
- We investigate all quality concerns to ensure our products perform to the highest standards

If the product does not perform as described on this datasheet, we will offer a refund or replacement. For full details of the Abpromise, please visit <https://www.abcam.com/abpromise> or contact our technical team.

Terms and conditions

- Guarantee only valid for products bought direct from Abcam or one of our authorized distributors