

## Product datasheet

# Anti-SKA1 antibody ab91550

[1 Image](#)

### Overview

---

<b>Product name</b>	Anti-SKA1 antibody
<b>Description</b>	Rabbit polyclonal to SKA1
<b>Host species</b>	Rabbit
<b>Specificity</b>	This antibody is specific for SKA1 and will not crossreact with SKA2 or SKA3.
<b>Tested applications</b>	<b>Suitable for:</b> WB
<b>Species reactivity</b>	<b>Reacts with:</b> Human
<b>Immunogen</b>	Synthetic peptide corresponding to Human SKA1 (C terminal). 13 amino acid peptide Database link: <a href="#">Q96BD8</a>

### General notes

The Life Science industry has been in the grips of a reproducibility crisis for a number of years. Abcam is leading the way in addressing this with our range of recombinant monoclonal antibodies and knockout edited cell lines for gold-standard validation. Please check that this product meets your needs before purchasing.

If you have any questions, special requirements or concerns, please send us an inquiry and/or contact our Support team ahead of purchase. Recommended alternatives for this product can be found below, along with publications, customer reviews and Q&As

### Properties

---

<b>Form</b>	Liquid
<b>Storage instructions</b>	Shipped at 4°C. Store at +4°C.
<b>Storage buffer</b>	pH: 7.2 Preservative: 0.02% Sodium azide Constituent: PBS
<b>Purity</b>	Immunogen affinity purified
<b>Purification notes</b>	Affinity chromatography purified via peptide column.
<b>Clonality</b>	Polyclonal
<b>Isotype</b>	IgG

### Applications

---

## The Abpromise guarantee

Our **Abpromise guarantee** covers the use of ab91550 in the following tested applications.

The application notes include recommended starting dilutions; optimal dilutions/concentrations should be determined by the end user.

Application	Abreviews	Notes
WB		Use a concentration of 0.5 - 1 µg/ml. Predicted molecular weight: 29 kDa.

## Target

### Function

Component of the SKA1 complex, a microtubule-binding subcomplex of the outer kinetochore that is essential for proper chromosome segregation. Required for timely anaphase onset during mitosis, when chromosomes undergo bipolar attachment on spindle microtubules leading to silencing of the spindle checkpoint. The SKA1 complex is a direct component of the kinetochore-microtubule interface and directly associates with microtubules as oligomeric assemblies. The complex facilitates the processive movement of microspheres along a microtubule in a depolymerization-coupled manner. In the complex, it mediates the interaction with microtubules.

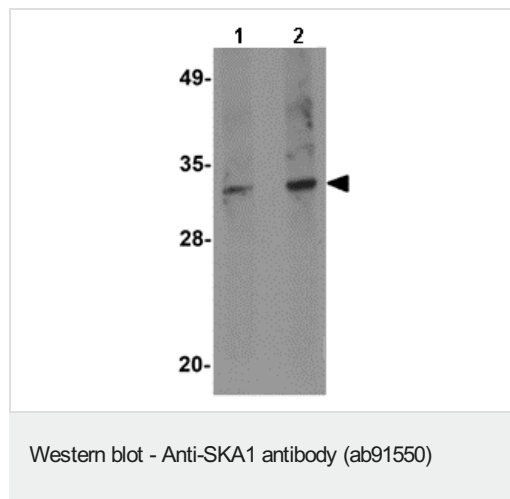
### Sequence similarities

Belongs to the SKA1 family.

### Cellular localization

Cytoplasm > cytoskeleton > spindle. Chromosome > centromere > kinetochore. Localizes to the outer kinetochore and spindle microtubules during mitosis in a NDC80 complex-dependent manner. Localizes to both the mitotic spindle and kinetochore-associated proteins. Associates with kinetochores following microtubule attachment from prometaphase, through mid-anaphase and then vanishes in telophase.

## Images



**Lane 1 :** Anti-SKA1 antibody (ab91550) at 0.5 µg/ml

**Lane 2 :** Anti-SKA1 antibody (ab91550) at 1 µg/ml

**All lanes :** A549 cell lysate

Lysates/proteins at 15 µg per lane.

**Predicted band size:** 29 kDa

**Please note:** All products are "FOR RESEARCH USE ONLY. NOT FOR USE IN DIAGNOSTIC PROCEDURES"

## Our Abpromise to you: Quality guaranteed and expert technical support

- Replacement or refund for products not performing as stated on the datasheet
- Valid for 12 months from date of delivery

- Response to your inquiry within 24 hours
- We provide support in Chinese, English, French, German, Japanese and Spanish
- Extensive multi-media technical resources to help you
- We investigate all quality concerns to ensure our products perform to the highest standards

If the product does not perform as described on this datasheet, we will offer a refund or replacement. For full details of the Abpromise, please visit <https://www.abcam.com/abpromise> or contact our technical team.

### **Terms and conditions**

---

- Guarantee only valid for products bought direct from Abcam or one of our authorized distributors