

Product datasheet

Anti-SLAMF6 antibody [EPR23122-130] ab243658

Recombinant RabMAb

5 Images

Overview

Product name	Anti-SLAMF6 antibody [EPR23122-130]
Description	Rabbit monoclonal [EPR23122-130] to SLAMF6
Host species	Rabbit
Tested applications	Suitable for: ICC/IF, Flow Cyt, IP Unsuitable for: IHC-P or WB
Species reactivity	Reacts with: Mouse
Immunogen	Recombinant fragment. This information is proprietary to Abcam and/or its suppliers.
Positive control	ICC/IF: EL4 and mouse splenocytes cells. Flow Cyt: Mouse splenocytes cells. IP: Mouse spleen lysate.
General notes	<p>This product is a recombinant monoclonal antibody, which offers several advantages including:</p> <ul style="list-style-type: none">- High batch-to-batch consistency and reproducibility- Improved sensitivity and specificity- Long-term security of supply- Animal-free production <p>For more information see here.</p> <p>Our RabMAb[®] technology is a patented hybridoma-based technology for making rabbit monoclonal antibodies. For details on our patents, please refer to RabMAb[®] patents.</p>

Properties

Form	Liquid
Storage instructions	Shipped at 4°C. Store at +4°C short term (1-2 weeks). Upon delivery aliquot. Store at -20°C long term. Avoid freeze / thaw cycle.
Storage buffer	pH: 7.2 Preservative: 0.01% Sodium azide Constituents: PBS, 40% Glycerol (glycerin, glycerine), 0.05% BSA
Purity	Protein A purified
Clonality	Monoclonal
Clone number	EPR23122-130

Isotype

IgG

Applications

The Abpromise guarantee

Our **Abpromise guarantee** covers the use of ab243658 in the following tested applications.

The application notes include recommended starting dilutions; optimal dilutions/concentrations should be determined by the end user.

Application	Abreviews	Notes
ICC/IF		1/50.
Flow Cyt		1/500.
IP		1/30.

Application notes

Is unsuitable for IHC-P or WB.

Target

Function

Triggers cytolytic activity only in natural killer cells (NK) expressing high surface densities of natural cytotoxicity receptors.

Tissue specificity

Expressed by all (resting and activated) natural killer cells (NK), T- and B-lymphocytes.

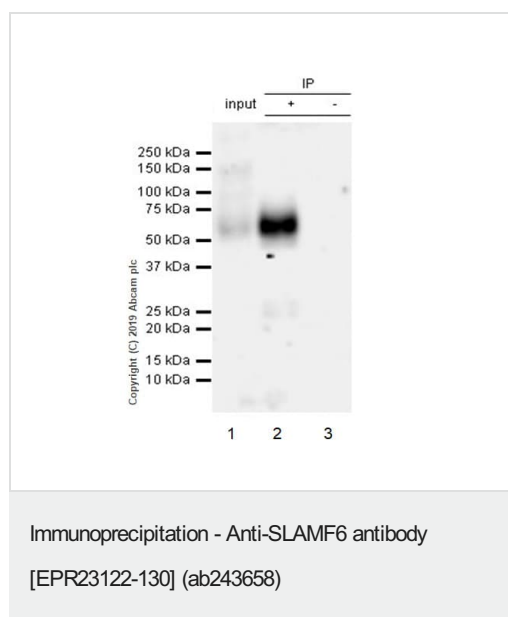
Sequence similarities

Contains 1 Ig-like (immunoglobulin-like) domain.

Cellular localization

Cell membrane.

Images



SLAMF6 was immunoprecipitated from 0.35 mg Mouse spleen lysate with ab243658 at 1/30 dilution (2µg in 0.35mg lysates). Western blot was performed on the immunoprecipitate using ab243658 at 1/500 dilution. VeriBlot for IP Detection Reagent (HRP) ([ab131366](#)) was used at 1/1000 dilution.

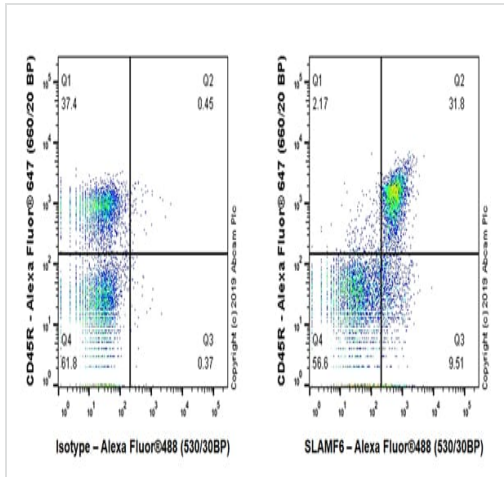
Lane 1: Mouse spleen lysate 10µg

Lane 2: ab243658 IP in Mouse spleen lysate

Lane 3: Rabbit monoclonal IgG ([ab172730](#)) instead of ab243658 in Mouse spleen lysate

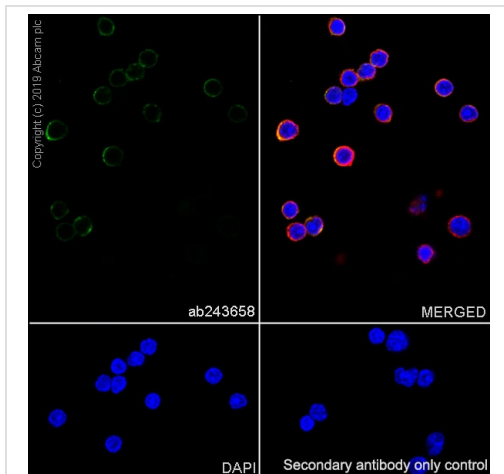
Blocking and dilution buffer and concentration: 5% NFDN/TBST.

Exposure time: 1 min



Flow Cytometry - Anti-SLAMF6 antibody
[EPR23122-130] (ab243658)

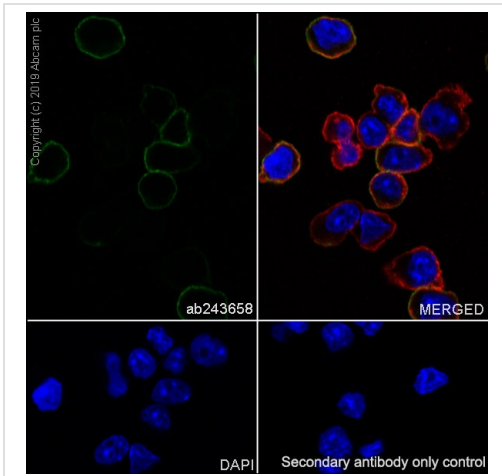
Flow cytometric analysis of Mouse splenocytes cells labelling SLAMF6 with ab243658 at 1/500 compared with a Rabbit monoclonal IgG (**ab172730**, Left) isotype control and an unlabelled control (cells without incubation with primary antibody and secondary antibody) (Blue). Goat anti rabbit IgG (Alexa Fluor® 488, **ab150077**) at 1/2000 was used as the secondary antibody.



Immunocytochemistry/ Immunofluorescence - Anti-SLAMF6 antibody [EPR23122-130] (ab243658)

Immunofluorescent analysis of 4% Paraformaldehyde-fixed, 0.1% TritonX-100 permeabilized mouse splenocytes cells labelling SLAMF6 with ab243658 at 1/50 dilution, followed by **ab150077** Alexa Fluor® 488 Goat anti-Rabbit secondary antibody at 1/1000 dilution (Green). Confocal image showing staining in some subsets of mouse splenocytes is observed. **ab195889** Anti-alpha Tubulin antibody [DM1A] - Microtubule Marker (Alexa Fluor® 594) was used to counterstain tubulin at 1/200 dilution (Red). The Nuclear counterstain was DAPI (Blue).

Secondary antibody only control: Secondary antibody is **ab150077** Alexa Fluor® 488 Goat anti-Rabbit secondary at 1/1000 dilution.



Immunocytochemistry/ Immunofluorescence - Anti-SLAMF6 antibody [EPR23122-130] (ab243658)

Immunofluorescent analysis of 4% Paraformaldehyde-fixed, 0.1% TritonX-100 permeabilized EL4 (mouse lymphoma T lymphocyte) cells labelling SLAMF6 with ab243658 at 1/50 dilution, followed by **ab150077** Alexa Fluor® 488 Goat anti-Rabbit secondary antibody at 1/1000 dilution (Green). Confocal image showing membranous staining in EL4 cells is observed. Ab195889 Anti-alpha Tubulin antibody [DM1A] - Microtubule Marker (Alexa Fluor® 594) was used to counterstain tubulin at 1/200 dilution (Red). The Nuclear counterstain was DAPI (Blue).

Secondary antibody only control: Secondary antibody is **ab150077** Alexa Fluor® 488 Goat anti-Rabbit secondary at 1/1000 dilution.

Why choose a recombinant antibody?

 <p>Research with confidence Consistent and reproducible results</p>	 <p>Long-term and scalable supply Recombinant technology</p>
 <p>Success from the first experiment Confirmed specificity</p>	 <p>Ethical standards compliant Animal-free production</p>

Anti-SLAMF6 antibody [EPR23122-130] (ab243658)

Please note: All products are "FOR RESEARCH USE ONLY. NOT FOR USE IN DIAGNOSTIC PROCEDURES"

Our Abpromise to you: Quality guaranteed and expert technical support

- Replacement or refund for products not performing as stated on the datasheet
- Valid for 12 months from date of delivery
- Response to your inquiry within 24 hours
- We provide support in Chinese, English, French, German, Japanese and Spanish
- Extensive multi-media technical resources to help you
- We investigate all quality concerns to ensure our products perform to the highest standards

If the product does not perform as described on this datasheet, we will offer a refund or replacement. For full details of the Abpromise, please visit <https://www.abcam.com/abpromise> or contact our technical team.

Terms and conditions

- Guarantee only valid for products bought direct from Abcam or one of our authorized distributors