

### Anti-SLAMF7/CS1 antibody [5G5A4] $\alpha$ b233779

5 Images

#### Overview

<b>Product name</b>	Anti-SLAMF7/CS1 antibody [5G5A4]
<b>Description</b>	Mouse monoclonal [5G5A4] to SLAMF7/CS1
<b>Host species</b>	Mouse
<b>Tested applications</b>	<b>Suitable for:</b> WB, IHC-P, Flow Cyt
<b>Species reactivity</b>	<b>Reacts with:</b> Human
<b>Immunogen</b>	Recombinant fragment corresponding to Human SLAMF7/CS1 aa 23-226. Extracellular domain. Expressed in E.coli. Database link: <a href="#">Q9NQ25</a>
<b>Positive control</b>	WB: Recombinant human SLAMF7/CS1 (aa 23-226) protein; Human SLAMF7/CS1 (aa 23-226)-hlgG-Fc-transfected HEK-293 cell lysate. IHC-P: Human tonsil and rectum cancer tissue. Flow cyt: Raji cells.
<b>General notes</b>	<p>The Life Science industry has been in the grips of a reproducibility crisis for a number of years. Abcam is leading the way in addressing this with our range of recombinant monoclonal antibodies and knockout edited cell lines for gold-standard validation. Please check that this product meets your needs before purchasing.</p> <p>If you have any questions, special requirements or concerns, please send us an inquiry and/or contact our Support team ahead of purchase. Recommended alternatives for this product can be found below, along with publications, customer reviews and Q&amp;As</p>

#### Properties

<b>Form</b>	Liquid
<b>Storage instructions</b>	Shipped at 4°C. Store at +4°C short term (1-2 weeks). Upon delivery aliquot. Store at -20°C long term. Avoid freeze / thaw cycle.
<b>Storage buffer</b>	Preservative: 0.05% Sodium azide Constituent: PBS
<b>Purity</b>	Protein G purified
<b>Purification notes</b>	Purified from tissue culture supernatant.
<b>Clonality</b>	Monoclonal
<b>Clone number</b>	5G5A4

Isotype

IgG1

## Applications

### The Abpromise guarantee

Our **Abpromise guarantee** covers the use of ab233779 in the following tested applications.

The application notes include recommended starting dilutions; optimal dilutions/concentrations should be determined by the end user.

Application	Abreviews	Notes
WB		1/500 - 1/2000. Predicted molecular weight: 37 kDa.
IHC-P		1/200 - 1/1000.
Flow Cyt		1/200 - 1/400.

## Target

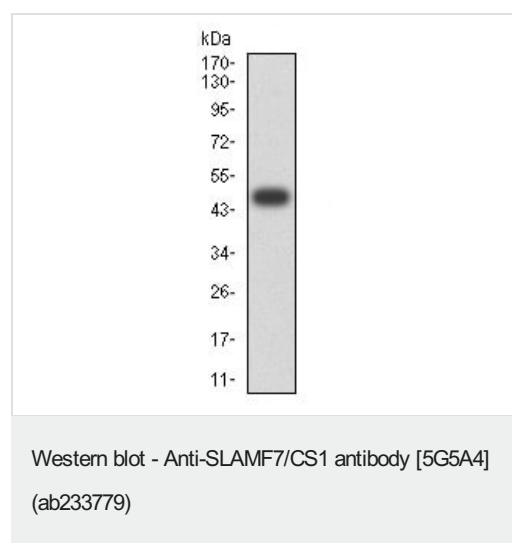
### Relevance

SLAMF7 contains one Ig-like C2-type (immunoglobulin-like) domain. Isoform 1 mediates NK cell activation through a SAP-independent extracellular signal-regulated ERK-mediated pathway. It may play a role in lymphocyte adhesion. Isoform 3 does not mediate any activation. SAP can bind the cytoplasmic tail of isoform 1 when phosphorylated in the presence of Fyn (in vitro). SLAMF7 is expressed in spleen, lymph node, peripheral blood leukocytes, bone marrow, small intestine, stomach, appendix, lung and trachea. Expression was detected in NK cells, activated B-cells, NK-cell line but not in promyelocytic, B-, or T-cell lines. The isoform 3 is expressed at much lower level than isoform 1. There are three named isoforms.

### Cellular localization

Membrane; Single-pass type I membrane protein.

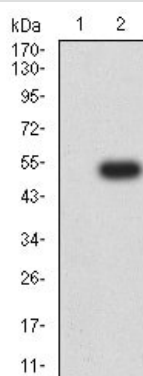
## Images



Anti-SLAMF7/CS1 antibody [5G5A4] (ab233779) at 1/500 dilution  
+ Recombinant human SLAMF7/CS1 (aa 23-226) protein

**Predicted band size:** 37 kDa

Expected MW is 48.3 kDa.



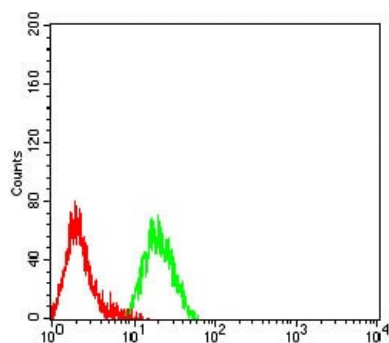
Western blot - Anti-SLAMF7/CS1 antibody [5G5A4] (ab233779)

**All lanes :** Anti-SLAMF7/CS1 antibody [5G5A4] (ab233779) at 1/500 dilution

**Lane 1 :** Untransfected HEK-293 (human epithelial cell line from embryonic kidney) cell lysate

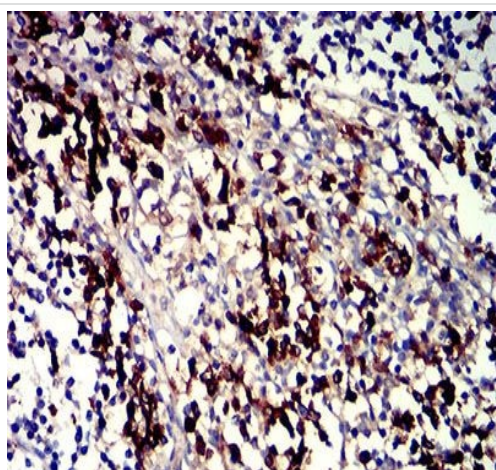
**Lane 2 :** Human SLAMF7/CS1 (aa 23-226)-hlgG-Fc-transfected HEK-293 cell lysate

**Predicted band size:** 37 kDa



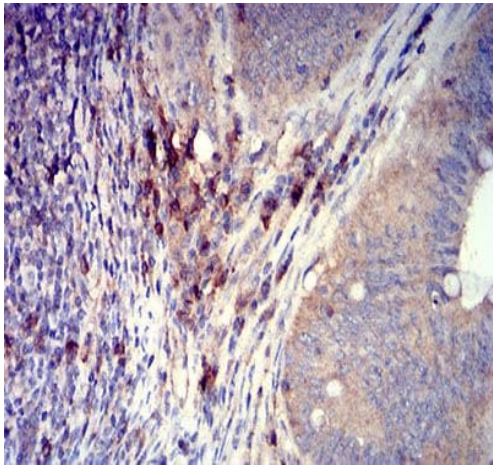
Flow Cytometry - Anti-SLAMF7/CS1 antibody [5G5A4] (ab233779)

Flow cytometric analysis of Raji (human Burkitt's lymphoma cell line) cells labeling SLAMF7/CS1 with ab233779 at 1/200 dilution (green) compared with a negative control (red).



Immunohistochemistry (Formalin/PFA-fixed paraffin-embedded sections) - Anti-SLAMF7/CS1 antibody [5G5A4] (ab233779)

Paraffin-embedded human tonsil tissue stained for SLAMF7/CS1 using ab233779 at 1/200 dilution in immunohistochemical analysis. DAB staining.



Immunohistochemistry (Formalin/PFA-fixed paraffin-embedded sections) - Anti-SLAMF7/CS1 antibody [5G5A4] (ab233779)

Paraffin-embedded human rectum cancer tissue stained for SLAMF7/CS1 using ab233779 at 1/200 dilution in immunohistochemical analysis. DAB staining.

**Please note:** All products are "FOR RESEARCH USE ONLY. NOT FOR USE IN DIAGNOSTIC PROCEDURES"

#### Our Abpromise to you: Quality guaranteed and expert technical support

---

- Replacement or refund for products not performing as stated on the datasheet
- Valid for 12 months from date of delivery
- Response to your inquiry within 24 hours
- We provide support in Chinese, English, French, German, Japanese and Spanish
- Extensive multi-media technical resources to help you
- We investigate all quality concerns to ensure our products perform to the highest standards

If the product does not perform as described on this datasheet, we will offer a refund or replacement. For full details of the Abpromise, please visit <https://www.abcam.com/abpromise> or contact our technical team.

#### Terms and conditions

---

- Guarantee only valid for products bought direct from Abcam or one of our authorized distributors