

Product datasheet

Anti-SLAMF7/CS1 antibody [CAL7] ab237730

Recombinant RabMAb

[1 References](#) [8 Images](#)

Overview

Product name	Anti-SLAMF7/CS1 antibody [CAL7]
Description	Rabbit monoclonal [CAL7] to SLAMF7/CS1
Host species	Rabbit
Tested applications	Suitable for: IHC-P, WB, IP Unsuitable for: Flow Cyt or ICC/IF
Species reactivity	Reacts with: Human
Immunogen	Synthetic peptide corresponding to Human SLAMF7/CS1 aa 248-335. Database link: Q9NQ25
Positive control	IHC-P: SLAMF7/CS1 Knock-in AD-293 cells; OPM2 xenograft tissue. WB: IM-9 cell lysate IP: Human tonsil and IM-9 lysate
General notes	(aka clone 43H1L46)

Properties

Form	Liquid
Storage instructions	Shipped at 4°C. Store at +4°C short term (1-2 weeks). Upon delivery aliquot. Store at -20°C long term. Avoid freeze / thaw cycle.
Storage buffer	pH: 7.50 Preservative: 0.05% Sodium azide Constituent: PBS
Purity	Protein A purified
Purification notes	Purity >99%
Clonality	Monoclonal
Clone number	CAL7
Isotype	IgG

Applications

The Abpromise guarantee

Our **Abpromise guarantee** covers the use of ab237730 in the following tested applications.

The application notes include recommended starting dilutions; optimal dilutions/concentrations should be determined by the end user.

Application	Abreviews	Notes
IHC-P		Use a concentration of 0.1 µg/ml. Perform heat mediated antigen retrieval with Tris/EDTA buffer pH 9.0 before commencing with IHC staining protocol.
WB		1/1000. Detects a band of approximately 37 kDa (predicted molecular weight: 37 kDa).
IP		1/30.

Application notes

Is unsuitable for Flow Cyt or ICC/IF.

Target

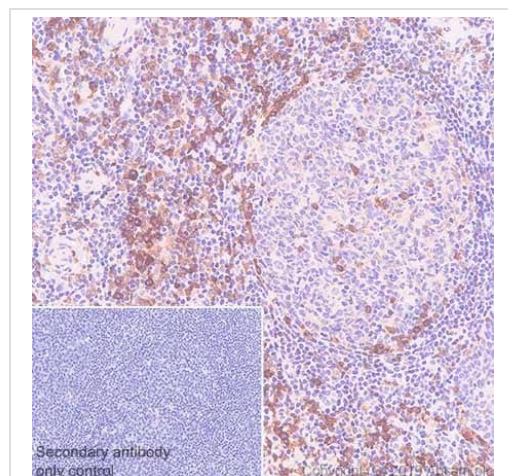
Relevance

SLAMF7 contains one Ig-like C2-type (immunoglobulin-like) domain. Isoform 1 mediates NK cell activation through a SAP-independent extracellular signal-regulated ERK-mediated pathway. It may play a role in lymphocyte adhesion. Isoform 3 does not mediate any activation. SAP can bind the cytoplasmic tail of isoform 1 when phosphorylated in the presence of Fyn (in vitro). SLAMF7 is expressed in spleen, lymph node, peripheral blood leukocytes, bone marrow, small intestine, stomach, appendix, lung and trachea. Expression was detected in NK cells, activated B-cells, NK-cell line but not in promyelocytic, B-, or T-cell lines. The isoform 3 is expressed at much lower level than isoform 1. There are three named isoforms.

Cellular localization

Membrane; Single-pass type I membrane protein.

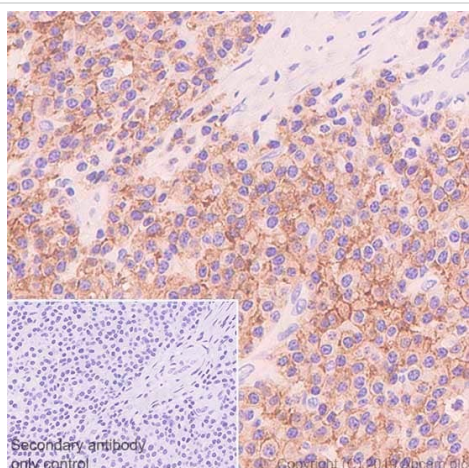
Images



Immunohistochemical analysis of paraffin-embedded human tonsil tissue labelling SLAMF7/CS1 with ab237730 at 1/800 dilution for 15 minutes at room temperature, followed by ready to use Goat Anti-Rabbit IgG H&L (HRP). Positive staining on human tonsil is observed. Counterstained with Hematoxylin. The immunostaining was performed on a Leica Biosystems BOND® RX instrument.

Secondary antibody only control: Used PBS instead of primary antibody, secondary antibody is a ready to use Goat Anti-Rabbit IgG H&L (HRP).

Immunohistochemistry (Formalin/PFA-fixed paraffin-embedded sections) - Anti-SLAMF7/CS1 antibody [CAL7] (ab237730)

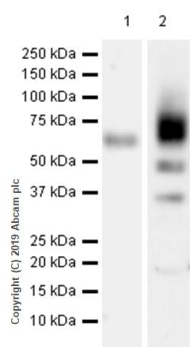


Immunohistochemistry (Formalin/PFA-fixed paraffin-embedded sections) - Anti-SLAMF7/CS1 antibody [CAL7] (ab237730)

Immunohistochemical analysis of paraffin-embedded human multiple myeloma tissue labelling SLAMF7/CS1 with ab237730 at 1/800 dilution for 15 minutes at room temperature, followed by ready to use Goat Anti-Rabbit IgG H&L (HRP). Mainly membranous staining on the human multiple myeloma is observed.

Counterstained with Hematoxylin. The immunostaining was performed on a Leica Biosystems BOND® RX instrument.

Secondary antibody only control: Used PBS instead of primary antibody, secondary antibody is a ready to use Goat Anti-Rabbit IgG H&L (HRP).



Western blot - Anti-SLAMF7/CS1 antibody [CAL7] (ab237730)

All lanes : Anti-SLAMF7/CS1 antibody [CAL7] (ab237730) at 1/1000 dilution

All lanes : IM-9 (human multiple myeloma B Lymphoblast) whole cell lysate

Lysates/proteins at 20 µg per lane.

Secondary

Lane 1 : VeriBlot for IP Detection Reagent (HRP) ([ab131366](#)) at 1/5000 dilution (VeriBlot for IP Detection Reagent (HRP))

Lane 2 : Goat Anti-Rabbit IgG H&L (HRP) ([ab97051](#)) at 1/100000 dilution (Goat Anti-Rabbit IgG, (H+L), Peroxidase conjugated)

Predicted band size: 37 kDa

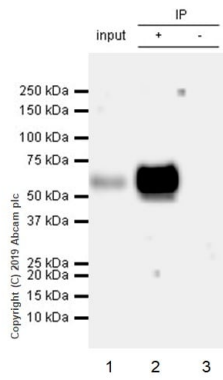
Blocking/Diluting buffer and concentration: 5% NFDM/TBST

Exposure time:

Lane 1: 3 min

Lane 2: 1min

The expression profile observed is consistent with what has been described in the literature (PMID: 18451245; 11698418; 25312647), with the bands greater than 37 kDa predicted to be glycosylated SLAMF7/CS1.



Immunoprecipitation - Anti-SLAMF7/CS1 antibody [CAL7] (ab237730)

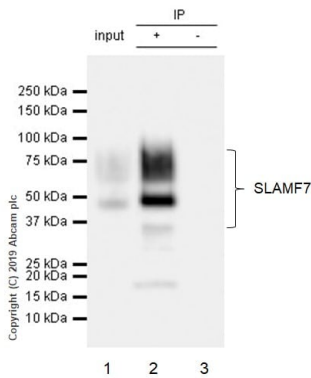
SLAMF7/CS1 was immunoprecipitated from 0.35mg of Human tonsil lysate with ab237730 at 1/30 dilution. Western blot was performed from the immunoprecipitated using ab237730 at 1/1000 dilution. VeriBlot for IP Detection Reagent (HRP) ([ab131366](#)) was used as secondary antibody at 1/5000 dilution.

Lane 1: Human tonsil lysate 10µg (Input)

Lane 2: ab237730 IP in Human tonsil lysate

Lane 3: Rabbit monoclonal IgG ([ab172730](#)) instead of ab237730 in Human tonsil lysate

Blocking/Diluting buffer and concentration: 5% NFDm/TBST



Immunoprecipitation - Anti-SLAMF7/CS1 antibody [CAL7] (ab237730)

SLAMF7/CS1 was immunoprecipitated from 0.35mg of IM-9 (human multiple myeloma B Lymphoblast) whole cell lysate with ab237730 at 1/30 dilution. Western blot was performed from the immunoprecipitated using ab237730 at 1/1000 dilution. VeriBlot for IP Detection Reagent (HRP) ([ab131366](#)) was used as secondary antibody at 1/5000 dilution.

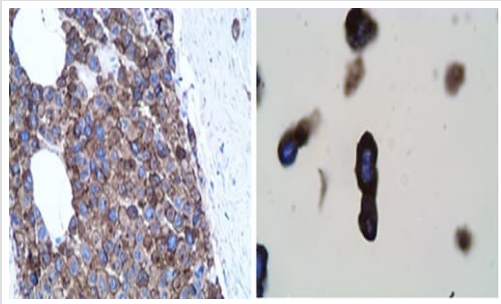
Lane 1: IM-9 (human multiple myeloma B Lymphoblast) whole cell lysate 10µg (Input)

Lane 2: ab237730 IP in IM-9 lysate

Lane 3: Rabbit monoclonal IgG ([ab172730](#)) instead of ab237730 in IM-9 whole cell lysate

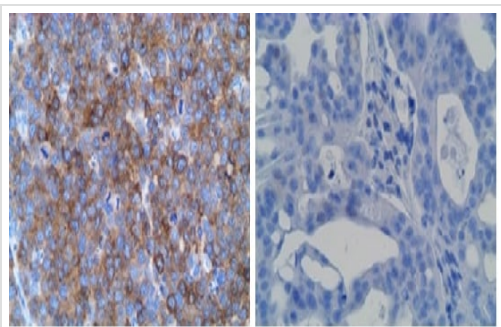
Blocking/diluting buffer and concentration: 5% NFDm/TBST

The expression profile observed is consistent with what has been described in the literature (PMID: 18451245; 11698418; 25312647), with the bands greater than 37 kDa predicted to be glycosylated SLAMF7/CS1.



Formalin-fixed, paraffin-embedded multiple myeloma (Lambda, left panel) and SLAMF7 Knock-in AD-293 cells (Positive control, right panel) stained for SLAMF7/CS1 using ab237730 at 0.1 µg/ml dilution in immunohistochemical analysis.

Immunohistochemistry (Formalin/PFA-fixed paraffin-embedded sections) - Anti-SLAMF7/CS1 antibody [CAL7] (ab237730)



Formalin-fixed, paraffin-embedded OPM2 xenograft (Positive control, left panel) and NCI-N87 xenograft (Negative control, right) tissue stained for SLAMF7/CS1 using ab237730 at 0.1 µg/ml dilution in immunohistochemical analysis.

Immunohistochemistry (Formalin/PFA-fixed paraffin-embedded sections) - Anti-SLAMF7/CS1 antibody [CAL7] (ab237730)

Why choose a recombinant antibody?



Research with confidence
Consistent and reproducible results



Long-term and scalable supply
Recombinant technology



Success from the first experiment
Confirmed specificity



Ethical standards compliant
Animal-free production

Anti-SLAMF7/CS1 antibody [CAL7] (ab237730)

Please note: All products are "FOR RESEARCH USE ONLY. NOT FOR USE IN DIAGNOSTIC PROCEDURES"

Our Abpromise to you: Quality guaranteed and expert technical support

- Replacement or refund for products not performing as stated on the datasheet

- Valid for 12 months from date of delivery
- Response to your inquiry within 24 hours

- We provide support in Chinese, English, French, German, Japanese and Spanish
- Extensive multi-media technical resources to help you
- We investigate all quality concerns to ensure our products perform to the highest standards

If the product does not perform as described on this datasheet, we will offer a refund or replacement. For full details of the Abpromise, please visit <https://www.abcam.com/abpromise> or contact our technical team.

Terms and conditions

- Guarantee only valid for products bought direct from Abcam or one of our authorized distributors