

## Product datasheet

### Anti-SLAMF7/CS1 antibody [EPR22948-114] ab223201

Recombinant RabMAb

3 Images

#### Overview

<b>Product name</b>	Anti-SLAMF7/CS1 antibody [EPR22948-114]
<b>Description</b>	Rabbit monoclonal [EPR22948-114] to SLAMF7/CS1
<b>Host species</b>	Rabbit
<b>Tested applications</b>	<b>Suitable for:</b> Flow Cyt <b>Unsuitable for:</b> ICC/IF, IHC-P, IP or WB
<b>Species reactivity</b>	<b>Reacts with:</b> Human
<b>Immunogen</b>	Recombinant fragment. This information is proprietary to Abcam and/or its suppliers.
<b>Positive control</b>	Flow Cyt: Human PBMCs.
<b>General notes</b>	<p>This product is a recombinant monoclonal antibody, which offers several advantages including:</p> <ul style="list-style-type: none"><li>- High batch-to-batch consistency and reproducibility</li><li>- Improved sensitivity and specificity</li><li>- Long-term security of supply</li><li>- Animal-free production</li></ul> <p>For more information <a href="#">see here</a>.</p> <p>Our RabMAb<sup>®</sup> technology is a patented hybridoma-based technology for making rabbit monoclonal antibodies. For details on our patents, please refer to <a href="#">RabMAb<sup>®</sup> patents</a>.</p>

#### Properties

<b>Form</b>	Liquid
<b>Storage instructions</b>	Shipped at 4°C. Store at +4°C short term (1-2 weeks). Upon delivery aliquot. Store at -20°C long term. Avoid freeze / thaw cycle.
<b>Storage buffer</b>	pH: 7.2 Preservative: 0.01% Sodium azide Constituents: PBS, 40% Glycerol (glycerin, glycerine), 0.05% BSA
<b>Purity</b>	Protein A purified
<b>Clonality</b>	Monoclonal
<b>Clone number</b>	EPR22948-114
<b>Isotype</b>	IgG

## Applications

### The Abpromise guarantee

Our **Abpromise guarantee** covers the use of ab223201 in the following tested applications.

The application notes include recommended starting dilutions; optimal dilutions/concentrations should be determined by the end user.

Application	Abreviews	Notes
Flow Cyt		1/500.

### Application notes

Is unsuitable for ICC/IF, IHC-P, IP or WB.

## Target

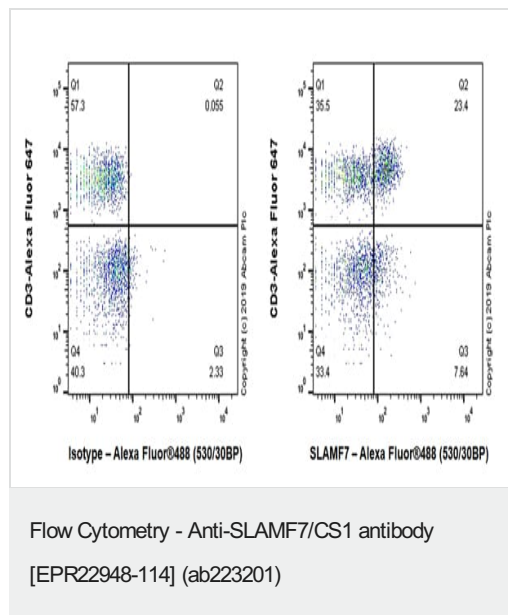
### Relevance

SLAMF7 contains one Ig-like C2-type (immunoglobulin-like) domain. Isoform 1 mediates NK cell activation through a SAP-independent extracellular signal-regulated ERK-mediated pathway. It may play a role in lymphocyte adhesion. Isoform 3 does not mediate any activation. SAP can bind the cytoplasmic tail of isoform 1 when phosphorylated in the presence of Fyn (in vitro). SLAMF7 is expressed in spleen, lymph node, peripheral blood leukocytes, bone marrow, small intestine, stomach, appendix, lung and trachea. Expression was detected in NK cells, activated B-cells, NK-cell line but not in promyelocytic, B-, or T-cell lines. The isoform 3 is expressed at much lower level than isoform 1. There are three named isoforms.

### Cellular localization

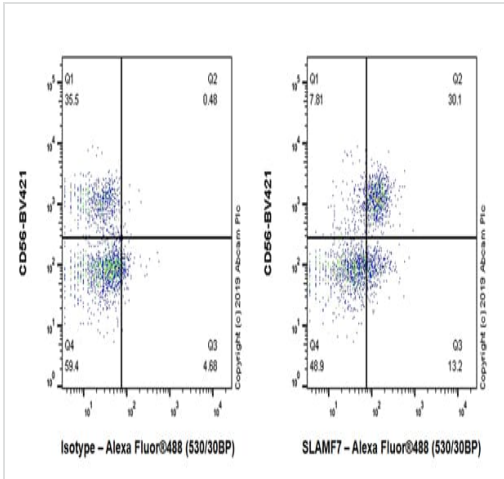
Membrane; Single-pass type I membrane protein.

## Images



Flow cytometric analysis of human peripheral blood mononuclear cell (PBMC) cells labeling SLAMF7/CS1 with ab223201 at 1/500 compared with a Rabbit monoclonal IgG (**ab172730**) / Black isotype control and an unlabeled control (cells without incubation with primary antibody and secondary antibody) (Blue). Goat anti rabbit IgG (Alexa Fluor<sup>®</sup> 488, **ab150097**) at 1/5000 dilution was used as the secondary antibody.

Cells were stained with rabbit IgG (Left) or ab223201 (Right). Then stained with anti-CD3 conjugated to Alexa Fluor<sup>®</sup> 647 and anti-CD56 conjugated to BV421. Gated on viable CD3(-) cells.



Flow Cytometry - Anti-SLAMF7/CS1 antibody  
[EPR22948-114] (ab223201)

Flow cytometric analysis of human peripheral blood mononuclear cell (PBMC) cells labeling SLAMF7/CS1 with ab223201 at 1/500 compared with a Rabbit monoclonal IgG (**ab172730**) / Black isotype control and an unlabeled control (cells without incubation with primary antibody and secondary antibody) (Blue). Goat anti rabbit IgG (Alexa Fluor<sup>®</sup> 488, **ab150097**) at 1/5000 dilution was used as the secondary antibody.

Cells were stained with rabbit IgG (Left) or ab223201 (Right). Then stained with anti-CD3 conjugated to Alexa Fluor<sup>®</sup> 647 and anti-CD56 conjugated to BV421. Gated on viable CD56(-) cells.

**Why choose a recombinant antibody?**

**Research with confidence**  
Consistent and reproducible results

**Long-term and scalable supply**  
Recombinant technology

**Success from the first experiment**  
Confirmed specificity

**Ethical standards compliant**  
Animal-free production

Anti-SLAMF7/CS1 antibody [EPR22948-114]  
(ab223201)

**Please note:** All products are "FOR RESEARCH USE ONLY. NOT FOR USE IN DIAGNOSTIC PROCEDURES"

**Our Promise to you: Quality guaranteed and expert technical support**

- Replacement or refund for products not performing as stated on the datasheet
- Valid for 12 months from date of delivery
- Response to your inquiry within 24 hours

- We provide support in Chinese, English, French, German, Japanese and Spanish
- Extensive multi-media technical resources to help you
- We investigate all quality concerns to ensure our products perform to the highest standards

If the product does not perform as described on this datasheet, we will offer a refund or replacement. For full details of the Abpromise, please visit <https://www.abcam.com/abpromise> or contact our technical team.

### **Terms and conditions**

---

- Guarantee only valid for products bought direct from Abcam or one of our authorized distributors