


## Product datasheet

### Anti-SLC12A1/NKCC2 antibody ab91098

1 Image

#### Overview

---

<b>Product name</b>	Anti-SLC12A1/NKCC2 antibody
<b>Description</b>	Rabbit polyclonal to SLC12A1/NKCC2
<b>Host species</b>	Rabbit
<b>Tested applications</b>	<b>Suitable for:</b> WB
<b>Species reactivity</b>	<b>Reacts with:</b> Human <b>Predicted to work with:</b> Mouse, Rabbit, Orangutan 
<b>Immunogen</b>	Synthetic peptide corresponding to Human SLC12A1/NKCC2 aa 50-150 conjugated to keyhole limpet haemocyanin. (Peptide available as <a href="#">ab101074</a> )
<b>Positive control</b>	This antibody gave a positive signal in Human kidney tissue lysate.
<b>General notes</b>	<p>The Life Science industry has been in the grips of a reproducibility crisis for a number of years. Abcam is leading the way in addressing this with our range of recombinant monoclonal antibodies and knockout edited cell lines for gold-standard validation. Please check that this product meets your needs before purchasing.</p> <p>If you have any questions, special requirements or concerns, please send us an inquiry and/or contact our Support team ahead of purchase. Recommended alternatives for this product can be found below, along with publications, customer reviews and Q&amp;As</p>

#### Properties

---

<b>Form</b>	Liquid
<b>Storage instructions</b>	Shipped at 4°C. Store at +4°C short term (1-2 weeks). Upon delivery aliquot. Store at -20°C or -80°C. Avoid freeze / thaw cycle.
<b>Storage buffer</b>	pH: 7.40 Preservative: 0.02% Sodium azide Constituent: PBS  Batches of this product that have a concentration < 1mg/ml may have BSA added as a stabilising agent. If you would like information about the formulation of a specific lot, please contact our scientific support team who will be happy to help.
<b>Purity</b>	Immunogen affinity purified

<b>Clonality</b>	Polyclonal
<b>Isotype</b>	IgG

## Applications

**The Abpromise guarantee** Our **Abpromise guarantee** covers the use of ab91098 in the following tested applications.

The application notes include recommended starting dilutions; optimal dilutions/concentrations should be determined by the end user.

Application	Abreviews	Notes
WB		Use a concentration of 1 µg/ml. Detects a band of approximately 130 kDa (predicted molecular weight: 120 kDa).

## Target

**Function** Electrically silent transporter system. Mediates sodium and chloride reabsorption. Plays a vital role in the regulation of ionic balance and cell volume.

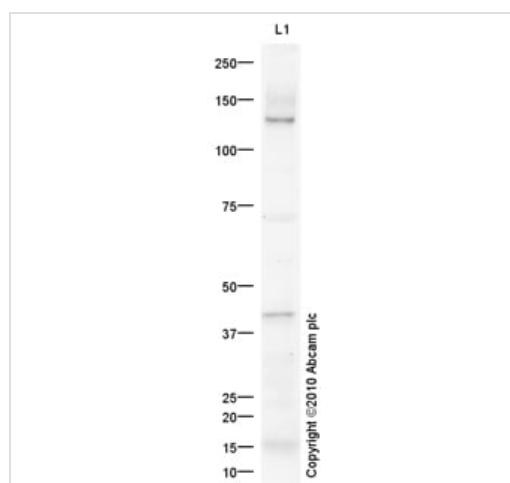
**Tissue specificity** Kidney specific.

**Involvement in disease** Defects in SLC12A1 are the cause of Bartter syndrome type 1 (BS1) [MIM:601678]. BS refers to a group of autosomal recessive disorders characterized by impaired salt reabsorption in the thick ascending loop of Henle with pronounced salt wasting, hypokalemic metabolic alkalosis, and varying degrees of hypercalciuria. BS1 is a life-threatening condition beginning in utero, with marked fetal polyuria that leads to polyhydramnios and premature delivery. Another hallmark of BS1 is a marked hypercalciuria and, as a secondary consequence, the development of nephrocalcinosis and osteopenia.

**Sequence similarities** Belongs to the SLC12A transporter family.

**Cellular localization** Membrane.

## Images



Western blot - Anti-SLC12A1/NKCC2 antibody (ab91098)

Anti-SLC12A1/NKCC2 antibody (ab91098) at 1 µg/ml + Human kidney tissue lysate - total protein ([ab30203](#)) at 10 µg

### Secondary

Goat Anti-Rabbit IgG H&L (HRP) preadsorbed ([ab97080](#)) at 1/5000 dilution

Developed using the ECL technique.

Performed under reducing conditions.

**Predicted band size:** 120 kDa

**Observed band size:** 130 kDa

**Additional bands at:** 42 kDa. We are unsure as to the identity of

these extra bands.

**Exposure time:** 12 minutes

SLC12A1/NKCC2 contains a number of potential glycosylation sites (SwissProt) which may explain its migration at a higher molecular weight than predicted.

**Please note:** All products are "FOR RESEARCH USE ONLY. NOT FOR USE IN DIAGNOSTIC PROCEDURES"

### **Our Abpromise to you: Quality guaranteed and expert technical support**

---

- Replacement or refund for products not performing as stated on the datasheet
- Valid for 12 months from date of delivery
- Response to your inquiry within 24 hours
- We provide support in Chinese, English, French, German, Japanese and Spanish
- Extensive multi-media technical resources to help you
- We investigate all quality concerns to ensure our products perform to the highest standards

If the product does not perform as described on this datasheet, we will offer a refund or replacement. For full details of the Abpromise, please visit <https://www.abcam.com/abpromise> or contact our technical team.

### **Terms and conditions**

---

- Guarantee only valid for products bought direct from Abcam or one of our authorized distributors