

Product datasheet

Anti-SLC12A1/NKCC2 antibody [EPR11842] ab171747

Recombinant RabMAb

[4 References](#) [3 Images](#)

Overview

Product name	Anti-SLC12A1/NKCC2 antibody [EPR11842]
Description	Rabbit monoclonal [EPR11842] to SLC12A1/NKCC2
Host species	Rabbit
Specificity	The homology between SLC12A1/NKCC2 and SLC12A2 is 67%, so ab171747 may cross react with SLC12A2. We have not performed any laboratory testing to validate this.
Tested applications	Suitable for: Flow Cyt (Intra), WB Unsuitable for: ICC/IF, IHC-P or IP
Species reactivity	Reacts with: Human
Immunogen	Recombinant fragment within Human SLC12A1/NKCC2. The exact sequence is proprietary. Database link: Q13621
Positive control	WB: 293T, Human fetal kidney, K562 and WI-38 whole cell lysates. Flow Cyt: K562 cells.
General notes	This product is a recombinant monoclonal antibody, which offers several advantages including: <ul style="list-style-type: none"> - High batch-to-batch consistency and reproducibility - Improved sensitivity and specificity - Long-term security of supply - Animal-free production For more information see here . Our RabMAb [®] technology is a patented hybridoma-based technology for making rabbit monoclonal antibodies. For details on our patents, please refer to RabMAb[®] patents .

Properties

Form	Liquid
Storage instructions	Shipped at 4°C. Store at +4°C short term (1-2 weeks). Upon delivery aliquot. Store at -20°C long term. Avoid freeze / thaw cycle.
Storage buffer	pH: 7.20 Preservative: 0.01% Sodium azide Constituents: 9% PBS, 40% Glycerol (glycerin, glycerine), 0.05% BSA, 50% Tissue culture supernatant
Purity	Protein A purified

Clonality	Monoclonal
Clone number	EPR11842
Isotype	IgG

Applications

The Abpromise guarantee Our **Abpromise guarantee** covers the use of ab171747 in the following tested applications. The application notes include recommended starting dilutions; optimal dilutions/concentrations should be determined by the end user.

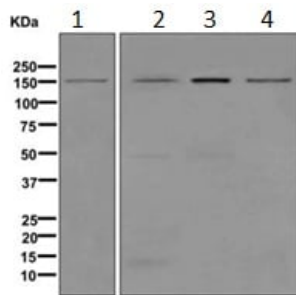
Application	Abreviews	Notes
Flow Cyt (Intra)		1/100 - 1/500. <u>ab172730</u> - Rabbit monoclonal IgG, is suitable for use as an isotype control with this antibody.
WB		1/1000 - 1/10000. Predicted molecular weight: 121 kDa.

Application notes Is unsuitable for ICC/IF, IHC-P or IP.

Target

Function	Electrically silent transporter system. Mediates sodium and chloride reabsorption. Plays a vital role in the regulation of ionic balance and cell volume.
Tissue specificity	Kidney specific.
Involvement in disease	Defects in SLC12A1 are the cause of Bartter syndrome type 1 (BS1) [MIM:601678]. BS refers to a group of autosomal recessive disorders characterized by impaired salt reabsorption in the thick ascending loop of Henle with pronounced salt wasting, hypokalemic metabolic alkalosis, and varying degrees of hypercalciuria. BS1 is a life-threatening condition beginning in utero, with marked fetal polyuria that leads to polyhydramnios and premature delivery. Another hallmark of BS1 is a marked hypercalciuria and, as a secondary consequence, the development of nephrocalcinosis and osteopenia.
Sequence similarities	Belongs to the SLC12A transporter family.
Cellular localization	Membrane.

Images



Western blot - Anti-SLC12A1/NKCC2 antibody [EPR11842] (ab171747)

All lanes : Anti-SLC12A1/NKCC2 antibody [EPR11842] (ab171747) at 1/1000 dilution

Lane 1 : 293T cell lysates

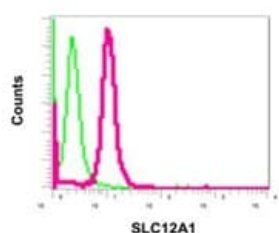
Lane 2 : Human fetal kidney lysates

Lane 3 : K562 cell lysates

Lane 4 : WI-38 cell lysate

Lysates/proteins at 10 µg per lane.

Predicted band size: 121 kDa



Flow Cytometry (Intracellular) - Anti-SLC12A1/NKCC2 antibody [EPR11842] (ab171747)

Intracellular flow cytometric analysis of permeabilized K562 cells labeling SLC12A1/NKCC2 with ab171747 at 1/100 dilution (red), compared with a rabbit IgG (negative) (green).

Why choose a recombinant antibody?



Research with confidence
Consistent and reproducible results



Long-term and scalable supply
Recombinant technology



Success from the first experiment
Confirmed specificity



Ethical standards compliant
Animal-free production

Anti-SLC12A1/NKCC2 antibody [EPR11842] (ab171747)

Please note: All products are "FOR RESEARCH USE ONLY. NOT FOR USE IN DIAGNOSTIC PROCEDURES"

Our Abpromise to you: Quality guaranteed and expert technical support

- Replacement or refund for products not performing as stated on the datasheet

- Valid for 12 months from date of delivery
- Response to your inquiry within 24 hours
- We provide support in Chinese, English, French, German, Japanese and Spanish
- Extensive multi-media technical resources to help you
- We investigate all quality concerns to ensure our products perform to the highest standards

If the product does not perform as described on this datasheet, we will offer a refund or replacement. For full details of the Abpromise, please visit <https://www.abcam.com/abpromise> or contact our technical team.

Terms and conditions

- Guarantee only valid for products bought direct from Abcam or one of our authorized distributors