

## Product datasheet

# Anti-SLC14A2 antibody [EPR8620] ab156589

Recombinant RabMAb

[1 References](#) [3 Images](#)

### Overview

<b>Product name</b>	Anti-SLC14A2 antibody [EPR8620]
<b>Description</b>	Rabbit monoclonal [EPR8620] to SLC14A2
<b>Host species</b>	Rabbit
<b>Tested applications</b>	<b>Suitable for:</b> WB, IP <b>Unsuitable for:</b> Flow Cyt, ICC/IF or IHC-P
<b>Species reactivity</b>	<b>Reacts with:</b> Human
<b>Immunogen</b>	Synthetic peptide within Human SLC14A2 aa 500-600. The exact sequence is proprietary. Database link: <a href="#">Q15849</a>
<b>Positive control</b>	K562, Human fetal kidney, 293T and TF1 lysates.
<b>General notes</b>	<p>This product is a recombinant monoclonal antibody, which offers several advantages including:</p> <ul style="list-style-type: none"><li>- High batch-to-batch consistency and reproducibility</li><li>- Improved sensitivity and specificity</li><li>- Long-term security of supply</li><li>- Animal-free production</li></ul> <p>For more information <a href="#">see here</a>.</p> <p>Our RabMAb<sup>®</sup> technology is a patented hybridoma-based technology for making rabbit monoclonal antibodies. For details on our patents, please refer to <a href="#">RabMAb<sup>®</sup> patents</a>.</p> <p><b>We are constantly working hard to ensure we provide our customers with best in class antibodies. As a result of this work we are pleased to now offer this antibody in purified format. We are in the process of updating our datasheets. The purified format is designated 'PUR' on our product labels. If you have any questions regarding this update, please contact our Scientific Support team.</b></p> <p>Rat: We have preliminary internal testing data to indicate this antibody may not react with this species. Please contact us for more information.</p>

### Properties

<b>Form</b>	Liquid
<b>Storage instructions</b>	Shipped at 4°C. Store at +4°C short term (1-2 weeks). Store at -20°C long term.
<b>Storage buffer</b>	pH: 7.2

Preservative: 0.01% Sodium azide  
Constituents: 59% PBS, 40% Glycerol (glycerin, glycerine), 0.5% BSA

**Purity** Protein A purified  
**Clonality** Monoclonal  
**Clone number** EPR8620  
**Isotype** IgG

## Applications

**The Abpromise guarantee** Our **Abpromise guarantee** covers the use of ab156589 in the following tested applications. The application notes include recommended starting dilutions; optimal dilutions/concentrations should be determined by the end user.

Application	Abreviews	Notes
WB		1/1000 - 1/10000. Predicted molecular weight: 101 kDa.
IP		1/10 - 1/100.

**Application notes** Is unsuitable for Flow Cyt, ICC/IF or IHC-P.

## Target

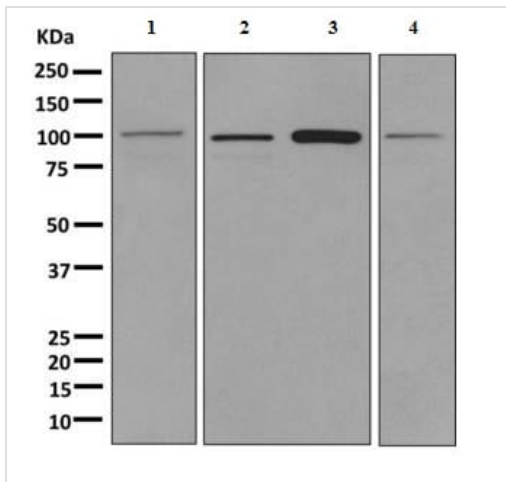
**Function** Specialized low-affinity vasopressin-regulated urea transporter. Mediates rapid transepithelial urea transport across the inner medullary collecting duct and plays a major role in the urinary concentrating mechanism.

**Tissue specificity** Isoform 1 and isoform 2 are expressed in the inner medulla of the kidney.

**Sequence similarities** Belongs to the urea transporter family.

**Cellular localization** Apical cell membrane.

## Images



Western blot - Anti-SLC14A2 antibody [EPR8620] (ab156589)

**All lanes :** Anti-SLC14A2 antibody [EPR8620] (ab156589) at 1/1000 dilution

**Lane 1 :** K562 lysate

**Lane 2 :** Human fetal kidney lysate

**Lane 3 :** 293T lysate

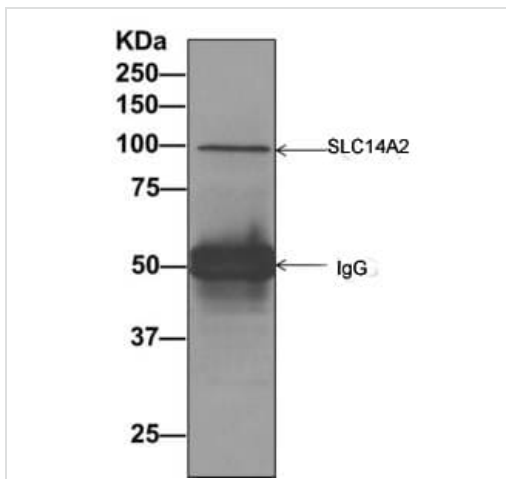
**Lane 4 :** TF1 lysate

Lysates/proteins at 10 µg per lane.

**Secondary**

**All lanes :** Goat anti-rabbit HRP at 1/2000 dilution

**Predicted band size:** 101 kDa



Immunoprecipitation - Anti-SLC14A2 antibody [EPR8620] (ab156589)

Detection of SLC14A2 by Western Blot of Immunoprecipitate.

293T cell lysate pellet, immunoprecipitated using ab156589 at 1/10 dilution.

Why choose a recombinant antibody?

- Research with confidence**  
Consistent and reproducible results
- Long-term and scalable supply**  
Recombinant technology
- Success from the first experiment**  
Confirmed specificity
- Ethical standards compliant**  
Animal-free production

Anti-SLC14A2 antibody [EPR8620] (ab156589)

**Please note:** All products are "FOR RESEARCH USE ONLY. NOT FOR USE IN DIAGNOSTIC PROCEDURES"

### **Our Abpromise to you: Quality guaranteed and expert technical support**

---

- Replacement or refund for products not performing as stated on the datasheet
- Valid for 12 months from date of delivery
- Response to your inquiry within 24 hours
  
- We provide support in Chinese, English, French, German, Japanese and Spanish
- Extensive multi-media technical resources to help you
- We investigate all quality concerns to ensure our products perform to the highest standards

If the product does not perform as described on this datasheet, we will offer a refund or replacement. For full details of the Abpromise, please visit <https://www.abcam.com/abpromise> or contact our technical team.

### **Terms and conditions**

---

- Guarantee only valid for products bought direct from Abcam or one of our authorized distributors