

Anti-SLC16A11 antibody ab230845

3 Images

Overview

Product name	Anti-SLC16A11 antibody
Description	Rabbit polyclonal to SLC16A11
Host species	Rabbit
Tested applications	Suitable for: Flow Cyt (Intra), IHC-P, WB
Species reactivity	Reacts with: Mouse, Human
Immunogen	Synthetic peptide within Human SLC16A11 aa 48-76 (N terminal) conjugated to keyhole limpet haemocyanin. The exact sequence is proprietary. Database link: Q8NCK7
Positive control	IHC-P: Human lung tissue. WB: Mouse brain and stomach lysates. Flow Cyt (Intra): WiDr cells.
General notes	<p>The Life Science industry has been in the grips of a reproducibility crisis for a number of years. Abcam is leading the way in addressing this with our range of recombinant monoclonal antibodies and knockout edited cell lines for gold-standard validation. Please check that this product meets your needs before purchasing.</p> <p>If you have any questions, special requirements or concerns, please send us an inquiry and/or contact our Support team ahead of purchase. Recommended alternatives for this product can be found below, along with publications, customer reviews and Q&As</p>

Properties

Form	Liquid
Storage instructions	Shipped at 4°C. Store at +4°C short term (1-2 weeks). Upon delivery aliquot. Store at -20°C long term. Avoid freeze / thaw cycle.
Storage buffer	pH: 7.4 Preservative: 0.09% Sodium azide Constituent: PBS
Purity	Protein A purified
Clonality	Polyclonal
Isotype	IgG

Applications

The Abpromise guarantee

Our **Abpromise guarantee** covers the use of ab230845 in the following tested applications.

The application notes include recommended starting dilutions; optimal dilutions/concentrations should be determined by the end user.

Application	Abreviews	Notes
Flow Cyt (Intra)		1/10 - 1/50.
IHC-P		1/50 - 1/100.
WB		1/1000. Predicted molecular weight: 48 kDa.

Target

Function

Proton-linked monocarboxylate transporter. Catalyzes the rapid transport across the plasma membrane of many monocarboxylates.

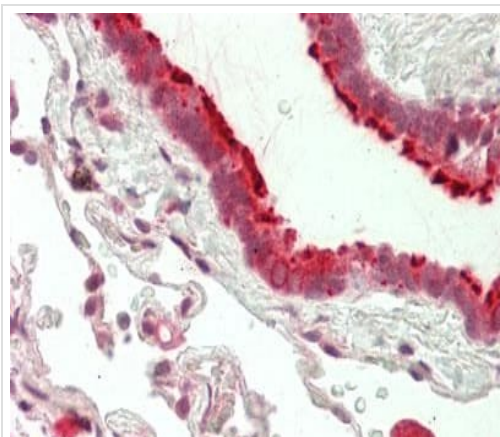
Sequence similarities

Belongs to the major facilitator superfamily. Monocarboxylate porter (TC 2.A.1.13) family.

Cellular localization

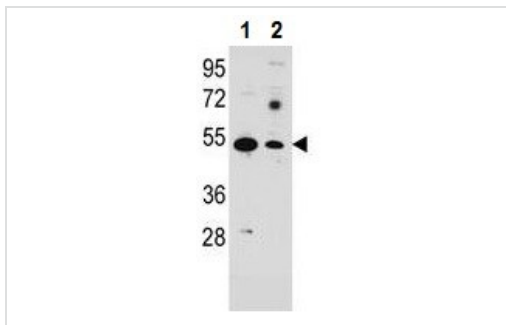
Cell membrane.

Images



Formalin-fixed, paraffin-embedded human lung tissue stained for SLC16A11 using ab230845 at 1/50 dilution in immunohistochemical analysis.

Immunohistochemistry (Formalin/PFA-fixed paraffin-embedded sections) - Anti-SLC16A11 antibody (ab230845)



Western blot - Anti-SLC16A11 antibody (ab230845)

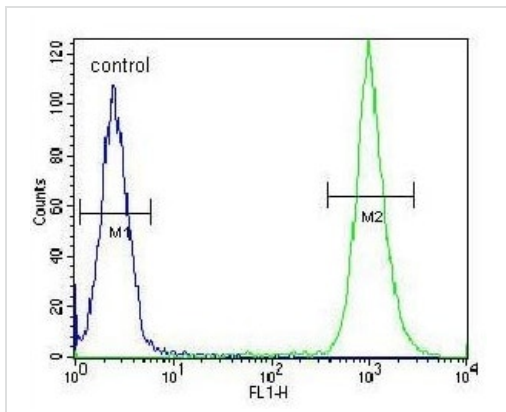
All lanes : Anti-SLC16A11 antibody (ab230845) at 1/1000 dilution

Lane 1 : Mouse brain lysate

Lane 2 : Mouse stomach lysate

Lysates/proteins at 35 µg per lane.

Predicted band size: 48 kDa



Flow Cytometry (Intracellular) - Anti-SLC16A11 antibody (ab230845)

Intracellular flow cytometric analysis of WiDr cells labeling

SLC16A11 with ab230845 at 1/10 dilution (green) compared with a negative control (blue). FITC-conjugated goat-anti-rabbit secondary antibodies were used for the analysis.

Please note: All products are "FOR RESEARCH USE ONLY. NOT FOR USE IN DIAGNOSTIC PROCEDURES"

Our Abpromise to you: Quality guaranteed and expert technical support

- Replacement or refund for products not performing as stated on the datasheet
- Valid for 12 months from date of delivery
- Response to your inquiry within 24 hours
- We provide support in Chinese, English, French, German, Japanese and Spanish
- Extensive multi-media technical resources to help you
- We investigate all quality concerns to ensure our products perform to the highest standards

If the product does not perform as described on this datasheet, we will offer a refund or replacement. For full details of the Abpromise, please visit <https://www.abcam.com/abpromise> or contact our technical team.

Terms and conditions

- Guarantee only valid for products bought direct from Abcam or one of our authorized distributors