



Product datasheet

Anti-SLC16A3/MCT 4 antibody ab234728

[3 References](#) [2 Images](#)

Overview

| | |
|----------------------------|---|
| Product name | Anti-SLC16A3/MCT 4 antibody |
| Description | Rabbit polyclonal to SLC16A3/MCT 4 |
| Host species | Rabbit |
| Tested applications | Suitable for: WB, ICC/IF |
| Species reactivity | Reacts with: Human |
| Immunogen | Recombinant fragment corresponding to Human SLC16A3/MCT 4 aa 400 to the C-terminus. Database link: O15427 |
| |  Run BLAST with  Run BLAST with |
| Positive control | WB: HeLa and MCF-7. ICC/IF: HepG2 cells. |
| General notes | <p>The Life Science industry has been in the grips of a reproducibility crisis for a number of years. Abcam is leading the way in addressing this with our range of recombinant monoclonal antibodies and knockout edited cell lines for gold-standard validation. Please check that this product meets your needs before purchasing.</p> <p>If you have any questions, special requirements or concerns, please send us an inquiry and/or contact our Support team ahead of purchase. Recommended alternatives for this product can be found below, along with publications, customer reviews and Q&As</p> |

Properties

| | |
|-----------------------------|---|
| Form | Liquid |
| Storage instructions | Shipped at 4°C. Store at +4°C short term (1-2 weeks). Upon delivery aliquot. Store at -20°C long term. Avoid freeze / thaw cycle. |
| Storage buffer | pH: 7.40 Preservative: 0.03% Proclin 300 Constituents: 50% Glycerol (glycerin, glycerine), PBS |
| Purity | Protein G purified |
| Purification notes | Purity >95% |
| Clonality | Polyclonal |
| Isotype | IgG |

Applications

The Abpromise guarantee

Our **Abpromise guarantee** covers the use of ab234728 in the following tested applications.

The application notes include recommended starting dilutions; optimal dilutions/concentrations should be determined by the end user.

| Application | Abreviews | Notes |
|-------------|-----------|--|
| WB | | 1/500 - 1/5000. Detects a band of approximately 49 kDa (predicted molecular weight: 49 kDa). |
| ICC/IF | | 1/50 - 1/200. |

Target

Function

Proton-linked monocarboxylate transporter. Catalyzes the rapid transport across the plasma membrane of many monocarboxylates such as lactate, pyruvate, branched-chain oxo acids derived from leucine, valine and isoleucine, and the ketone bodies acetoacetate, beta-hydroxybutyrate and acetate.

Tissue specificity

Highly expressed in skeletal muscle.

Sequence similarities

Belongs to the major facilitator superfamily. Monocarboxylate porter (TC 2.A.1.13) family.

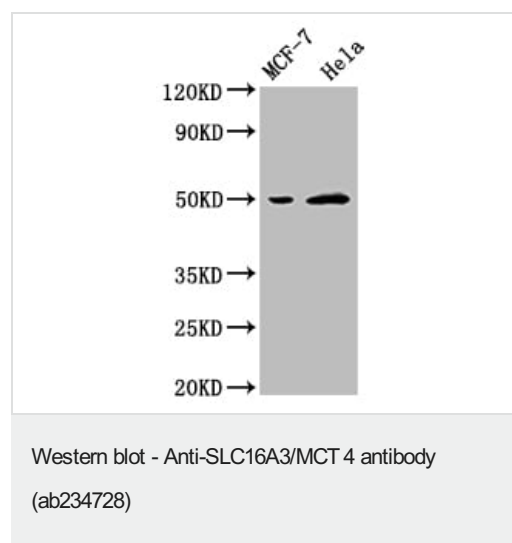
Cellular localization

Cell membrane.

Form

Lactic acid and pyruvate transport across plasma membranes is catalyzed by members of the proton linked monocarboxylate transporter (MCT) family, which has been designated solute carrier family 16. Each MCT appears to have slightly different substrate and inhibitor specificities and transport kinetics, which are related to the metabolic requirements of the tissues in which it is found. The MCTs, which include MCT1 and MCT2, are characterized by 12 predicted transmembrane domains.

Images



All lanes : Anti-SLC16A3/MCT 4 antibody (ab234728) at 1/2500 dilution

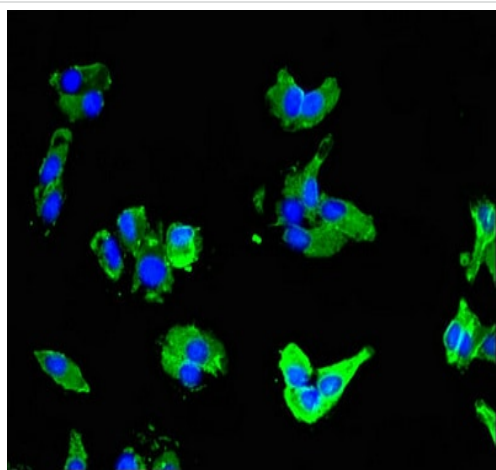
Lane 1 : MCF-7 whole cell lysate

Lane 2 : HeLa whole cell lysate

Secondary

All lanes : Goat polyclonal to rabbit IgG at 1/5000 dilution

Predicted band size: 49 kDa



Immunocytochemistry/ Immunofluorescence - Anti-SLC16A3/MCT 4 antibody (ab234728)

HepG2 (human liver hepatocellular carcinoma cell line) cells stained for SLC16A3/MCT 4 using ab234728 at a dilution of 1/100 in ICC/IF. Secondary antibody is an Alexa-Fluor® 488-conjugated Goat Anti-Rabbit IgG (H+L).

Please note: All products are "FOR RESEARCH USE ONLY. NOT FOR USE IN DIAGNOSTIC PROCEDURES"

Our Abpromise to you: Quality guaranteed and expert technical support

- Replacement or refund for products not performing as stated on the datasheet
- Valid for 12 months from date of delivery
- Response to your inquiry within 24 hours
- We provide support in Chinese, English, French, German, Japanese and Spanish
- Extensive multi-media technical resources to help you
- We investigate all quality concerns to ensure our products perform to the highest standards

If the product does not perform as described on this datasheet, we will offer a refund or replacement. For full details of the Abpromise, please visit <https://www.abcam.com/abpromise> or contact our technical team.

Terms and conditions

- Guarantee only valid for products bought direct from Abcam or one of our authorized distributors