


Product datasheet

Anti-SLC16A3/MCT 4 antibody ab74109

★★★★★ [2 Abreviews](#) [10 References](#) [1 Image](#)

Overview

| | |
|----------------------------|---|
| Product name | Anti-SLC16A3/MCT 4 antibody |
| Description | Rabbit polyclonal to SLC16A3/MCT 4 |
| Host species | Rabbit |
| Tested applications | Suitable for: WB |
| Species reactivity | Reacts with: Human Predicted to work with: Mouse, Rat  |
| Immunogen | Synthetic peptide. This information is proprietary to Abcam and/or its suppliers. |
| Positive control | Extracts from LOVO cells |
| General notes | <p>The Life Science industry has been in the grips of a reproducibility crisis for a number of years. Abcam is leading the way in addressing this with our range of recombinant monoclonal antibodies and knockout edited cell lines for gold-standard validation. Please check that this product meets your needs before purchasing.</p> <p>If you have any questions, special requirements or concerns, please send us an inquiry and/or contact our Support team ahead of purchase. Recommended alternatives for this product can be found below, along with publications, customer reviews and Q&As</p> |

Properties

| | |
|-----------------------------|---|
| Form | Liquid |
| Storage instructions | Shipped at 4°C. Upon delivery aliquot and store at -20°C. Avoid freeze / thaw cycles. |
| Storage buffer | pH: 7.40 Preservative: 0.02% Sodium azide Constituents: 50% Glycerol, 0.87% Sodium chloride, PBS |
| Purity | Immunogen affinity purified |
| Purification notes | The antibody was affinity purified from rabbit antiserum by affinity chromatography using epitope specific immunogen. |
| Clonality | Polyclonal |
| Isotype | IgG |

Applications

Applications

The Abpromise guarantee

Our **Abpromise guarantee** covers the use of ab74109 in the following tested applications.

The application notes include recommended starting dilutions; optimal dilutions/concentrations should be determined by the end user.

| Application | Abreviews | Notes |
|-------------|-----------|---|
| WB | ★★★★★ (2) | 1/500 - 1/1000. Predicted molecular weight: 49 kDa. |

Target

Function

Proton-linked monocarboxylate transporter. Catalyzes the rapid transport across the plasma membrane of many monocarboxylates such as lactate, pyruvate, branched-chain oxo acids derived from leucine, valine and isoleucine, and the ketone bodies acetoacetate, beta-hydroxybutyrate and acetate.

Tissue specificity

Highly expressed in skeletal muscle.

Sequence similarities

Belongs to the major facilitator superfamily. Monocarboxylate porter (TC 2.A.1.13) family.

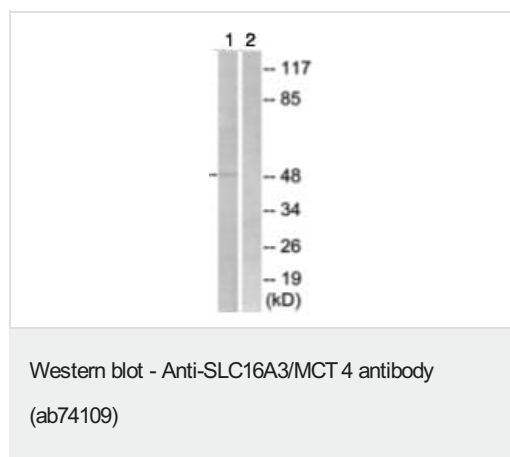
Cellular localization

Cell membrane.

Form

Lactic acid and pyruvate transport across plasma membranes is catalyzed by members of the proton linked monocarboxylate transporter (MCT) family, which has been designated solute carrier family 16. Each MCT appears to have slightly different substrate and inhibitor specificities and transport kinetics, which are related to the metabolic requirements of the tissues in which it is found. The MCTs, which include MCT1 and MCT2, are characterized by 12 predicted transmembrane domains.

Images



All lanes : Anti-SLC16A3/MCT 4 antibody (ab74109) at 1/500 dilution

Lane 1 : extracts from LOVO cells

Lane 2 : extracts from LOVO cells with immunizing peptide at 5 µg

Lysates/proteins at 10 µg per lane.

Predicted band size: 49 kDa

Observed band size: 49 kDa

Please note: All products are "FOR RESEARCH USE ONLY. NOT FOR USE IN DIAGNOSTIC PROCEDURES"

Our Abpromise to you: Quality guaranteed and expert technical support

- Replacement or refund for products not performing as stated on the datasheet

- Valid for 12 months from date of delivery
- Response to your inquiry within 24 hours
- We provide support in Chinese, English, French, German, Japanese and Spanish
- Extensive multi-media technical resources to help you
- We investigate all quality concerns to ensure our products perform to the highest standards

If the product does not perform as described on this datasheet, we will offer a refund or replacement. For full details of the Abpromise, please visit <https://www.abcam.com/abpromise> or contact our technical team.

Terms and conditions

- Guarantee only valid for products bought direct from Abcam or one of our authorized distributors