


Product datasheet

Anti-SLC22A2 antibody [EPR11248] ab170871

Recombinant RabMAb

★★★★★ [2 Abreviews](#) [6 References](#) [7 Images](#)

Overview

Product name	Anti-SLC22A2 antibody [EPR11248]
Description	Rabbit monoclonal [EPR11248] to SLC22A2
Host species	Rabbit
Tested applications	Suitable for: WB, IHC-P Unsuitable for: Flow Cyt, ICC/IF or IP
Species reactivity	Reacts with: Human Predicted to work with: Mouse, Rat 
Immunogen	Synthetic peptide within Human SLC22A2 aa 100-200. The exact sequence is proprietary. Database link: O15244
Positive control	Human fetal kidney lysate, 293T, HepG2 and A431 lysates, Human kidney tissue and Human prostate tissue
General notes	This product is a recombinant monoclonal antibody, which offers several advantages including: <ul style="list-style-type: none"> - High batch-to-batch consistency and reproducibility - Improved sensitivity and specificity - Long-term security of supply - Animal-free production For more information see here . Our RabMAb [®] technology is a patented hybridoma-based technology for making rabbit monoclonal antibodies. For details on our patents, please refer to RabMAb[®] patents .

Properties

Form	Liquid
Storage instructions	Shipped at 4°C. Store at +4°C short term (1-2 weeks). Upon delivery aliquot. Store at -20°C long term. Avoid freeze / thaw cycle.
Storage buffer	pH: 7.2 Preservative: 0.01% Sodium azide Constituents: 9% PBS, 40% Glycerol (glycerin, glycerine), 0.05% BSA, 50% Tissue culture supernatant
Purity	Protein A purified

Clonality	Monoclonal
Clone number	EPR11248
Isotype	IgG

Applications

The Abpromise guarantee Our **Abpromise guarantee** covers the use of ab170871 in the following tested applications. The application notes include recommended starting dilutions; optimal dilutions/concentrations should be determined by the end user.

Application	Abreviews	Notes
WB	★★★★★ (2)	1/1000 - 1/5000. Predicted molecular weight: 63 kDa.
IHC-P		1/100 - 1/250. Perform heat mediated antigen retrieval with citrate buffer pH 6 before commencing with IHC staining protocol. Mouse and rat species are recommended based on WB results, we do not guarantee IHC-P for mouse and rat.

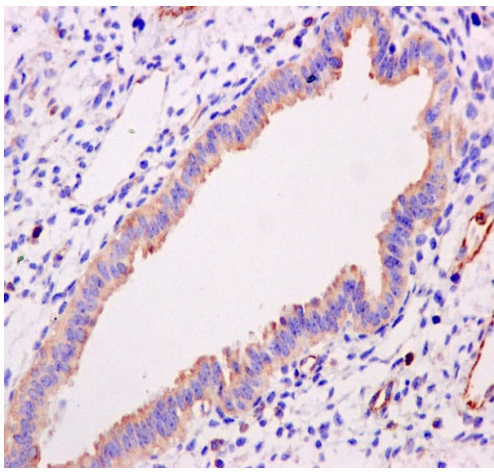
Application notes Is unsuitable for Flow Cyt, ICC/IF or IP.

Target

Relevance SLC22A2 (solute carrier family 22 (organic cation transporter), member 2) is an organic cation transporter. Polyspecific organic cation transporters in the liver, kidney, intestine, and other organs are critical for elimination of many endogenous small organic cations as well as a wide array of drugs and environmental toxins. SLC22A2 is found primarily in the kidney, where it may mediate the first step in cation reabsorption. It plays important roles in the renal tubular secretion of cationic drugs.

Cellular localization Plasma membrane

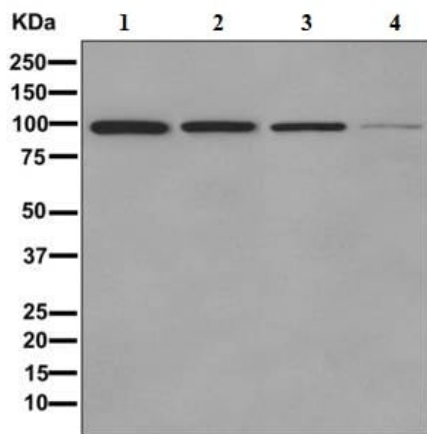
Images



Immunohistochemistry (Formalin/PFA-fixed paraffin-embedded sections) - Anti-SLC22A2 antibody [EPR11248] (ab170871)

ab170871 showing +ve staining in Human uterus tissue.

Perform heat mediated antigen retrieval with citrate buffer pH 6 before commencing with IHC staining protocol.



Western blot - Anti-SLC22A2 antibody [EPR11248] (ab170871)

All lanes : Anti-SLC22A2 antibody [EPR11248] (ab170871) at 1/1000 dilution

Lane 1 : Human fetal kidney lysate

Lane 2 : 293T lysate

Lane 3 : HepG2 lysate

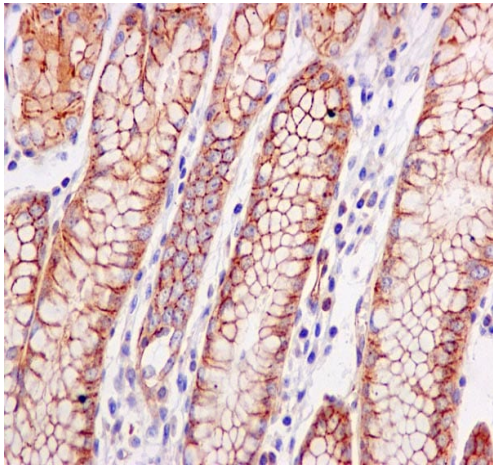
Lane 4 : A431 lysate

Lysates/proteins at 10 µg per lane.

Secondary

All lanes : HRP labeled goat anti-rabbit IgG at 1/2000 dilution

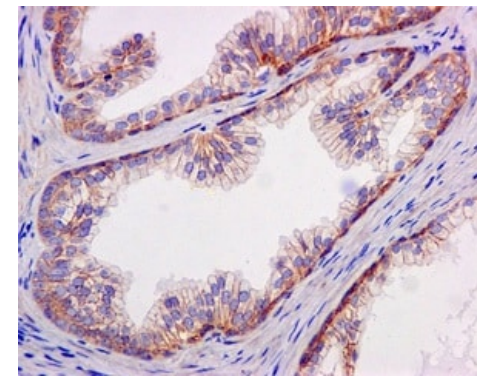
Predicted band size: 63 kDa



Immunohistochemistry (Formalin/PFA-fixed paraffin-embedded sections) - Anti-SLC22A2 antibody [EPR11248] (ab170871)

ab170871 showing +ve staining in Human normal stomach tissue.

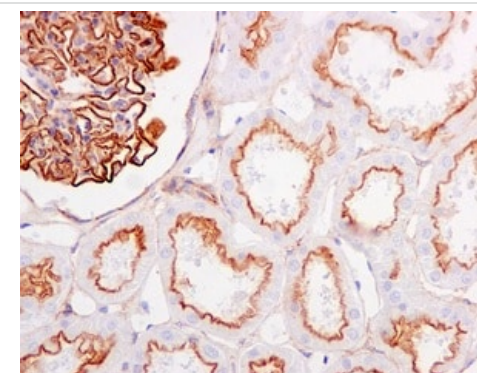
Perform heat mediated antigen retrieval with citrate buffer pH 6 before commencing with IHC staining protocol.



Immunohistochemistry (Formalin/PFA-fixed paraffin-embedded sections) - Anti-SLC22A2 antibody [EPR11248] (ab170871)

Immunohistochemical analysis of paraffin-embedded Human prostate tissue labeling SLC22A2 using ab170871 at a 1/100 dilution.

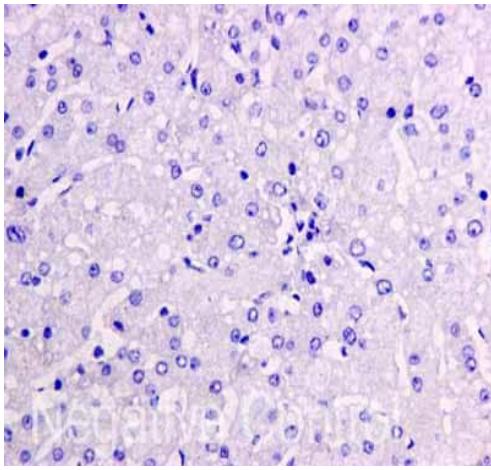
Perform heat mediated antigen retrieval with citrate buffer pH 6 before commencing with IHC staining protocol.



Immunohistochemistry (Formalin/PFA-fixed paraffin-embedded sections) - Anti-SLC22A2 antibody [EPR11248] (ab170871)

Immunohistochemical analysis of paraffin-embedded Human kidney tissue labeling SLC22A2 using ab170871 at a 1/100 dilution.

Perform heat mediated antigen retrieval with citrate buffer pH 6 before commencing with IHC staining protocol.

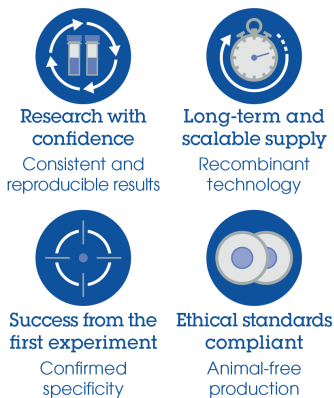


Immunohistochemistry (Formalin/PFA-fixed paraffin-embedded sections) - Anti-SLC22A2 antibody [EPR11248] (ab170871)

ab170871 showing -ve staining in Human normal liver tissue.

Perform heat mediated antigen retrieval with citrate buffer pH 6 before commencing with IHC staining protocol.

Why choose a recombinant antibody?



Anti-SLC22A2 antibody [EPR11248] (ab170871)

Please note: All products are "FOR RESEARCH USE ONLY. NOT FOR USE IN DIAGNOSTIC PROCEDURES"

Our Abpromise to you: Quality guaranteed and expert technical support

- Replacement or refund for products not performing as stated on the datasheet
- Valid for 12 months from date of delivery
- Response to your inquiry within 24 hours
- We provide support in Chinese, English, French, German, Japanese and Spanish
- Extensive multi-media technical resources to help you
- We investigate all quality concerns to ensure our products perform to the highest standards

If the product does not perform as described on this datasheet, we will offer a refund or replacement. For full details of the Abpromise, please visit <https://www.abcam.com/abpromise> or contact our technical team.

Terms and conditions

- Guarantee only valid for products bought direct from Abcam or one of our authorized distributors