

Product datasheet

Anti-SLC22A23 antibody ab235004

[2 Images](#)

Overview

Product name	Anti-SLC22A23 antibody
Description	Rabbit polyclonal to SLC22A23
Host species	Rabbit
Tested applications	Suitable for: IHC-P, WB
Species reactivity	Reacts with: Mouse, Human
Immunogen	Recombinant fragment corresponding to Human SLC22A23 aa 3-206. Database link: A1A5C7
Positive control	WB: Mouse kidney and liver tissue lysates. IHC-P: Human small intestine tissue.
General notes	<p>The Life Science industry has been in the grips of a reproducibility crisis for a number of years. Abcam is leading the way in addressing this with our range of recombinant monoclonal antibodies and knockout edited cell lines for gold-standard validation. Please check that this product meets your needs before purchasing.</p> <p>If you have any questions, special requirements or concerns, please send us an inquiry and/or contact our Support team ahead of purchase. Recommended alternatives for this product can be found below, along with publications, customer reviews and Q&As</p>

Properties

Form	Liquid
Storage instructions	Shipped at 4°C. Store at +4°C short term (1-2 weeks). Upon delivery aliquot. Store at -20°C long term. Avoid freeze / thaw cycle.
Storage buffer	pH: 7.40 Preservative: 0.03% Proclin 300 Constituents: PBS, 50% Glycerol (glycerin, glycerine)
Purity	Protein G purified
Purification notes	Purity >95%.
Clonality	Polyclonal
Isotype	IgG

Applications

The Abpromise guarantee

Our **Abpromise guarantee** covers the use of ab235004 in the following tested applications.

The application notes include recommended starting dilutions; optimal dilutions/concentrations should be determined by the end user.

Application	Abreviews	Notes
IHC-P		1/20 - 1/200.
WB		1/500 - 1/5000. Predicted molecular weight: 74 kDa.

Target

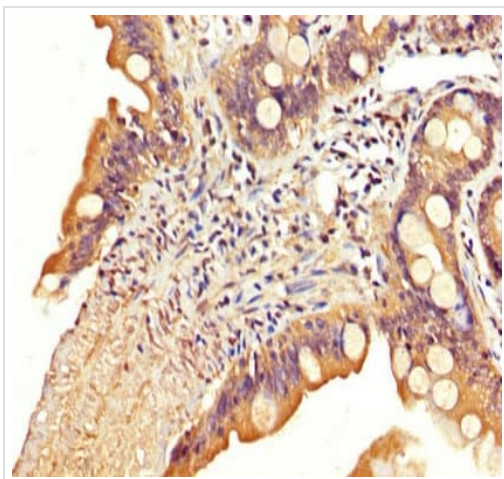
Relevance

SLC22A23 belongs to a large family of transmembrane proteins that function as uniporters, symporters, and antiporters to transport organic ions across cell membranes (Jacobsson et al., 2007 [PubMed 17714910]).[supplied by OMM]

Cellular localization

Membrane; Multipass membrane protein

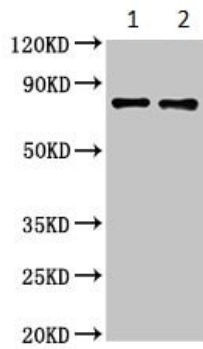
Images



Immunohistochemistry (Formalin/PFA-fixed paraffin-embedded sections) - Anti-SLC22A23 antibody (ab235004)

Paraffin-embedded human small intestine tissue stained for SLC22A23 using ab235004 at 1/200 dilution in immunohistochemical analysis.

After dewaxing and hydration, antigen retrieval was mediated by high pressure in a citrate buffer (pH 6.0). Section was blocked with 10% normal goat serum 30min at RT. Then primary antibody (1% BSA) was incubated at 4°C overnight. Staining was performed on a Leica Bond™ system. The primary is detected by a biotinylated secondary antibody and visualized tissue using an HRP conjugated SP system.



Western blot - Anti-SLC22A23 antibody (ab235004)

All lanes : Anti-SLC22A23 antibody (ab235004) at 1/500 dilution

Lane 1 : Mouse liver tissue lysate.

Lane 2 : Mouse kidney tissue lysate.

Secondary

All lanes : Goat polyclonal to rabbit IgG at 1/50000 dilution

Predicted band size: 74 kDa

Please note: All products are "FOR RESEARCH USE ONLY. NOT FOR USE IN DIAGNOSTIC PROCEDURES"

Our Abpromise to you: Quality guaranteed and expert technical support

- Replacement or refund for products not performing as stated on the datasheet
- Valid for 12 months from date of delivery
- Response to your inquiry within 24 hours

- We provide support in Chinese, English, French, German, Japanese and Spanish
- Extensive multi-media technical resources to help you
- We investigate all quality concerns to ensure our products perform to the highest standards

If the product does not perform as described on this datasheet, we will offer a refund or replacement. For full details of the Abpromise, please visit <https://www.abcam.com/abpromise> or contact our technical team.

Terms and conditions

- Guarantee only valid for products bought direct from Abcam or one of our authorized distributors