

## Product datasheet

### Anti-SLC22A3/OCT3 antibody [EPR6630] ab124826

Recombinant RabMAb

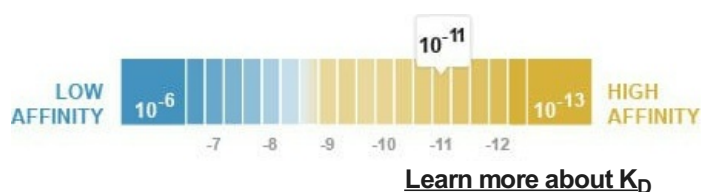
[10 References](#) [5 Images](#)

#### Overview

Product name	Anti-SLC22A3/OCT3 antibody [EPR6630]
Description	Rabbit monoclonal [EPR6630] to SLC22A3/OCT3
Host species	Rabbit
Tested applications	<b>Suitable for:</b> Flow Cyt (Intra), WB, IHC-P <b>Unsuitable for:</b> IP
Species reactivity	<b>Reacts with:</b> Human
Immunogen	Synthetic peptide within Human SLC22A3/OCT3 aa 300-400. The exact sequence is proprietary.
Positive control	Human fetal kidney, Human muscle and Human placenta lysates; Human kidney tissue
General notes	<p>This product is a recombinant monoclonal antibody, which offers several advantages including:</p> <ul style="list-style-type: none"> <li>- High batch-to-batch consistency and reproducibility</li> <li>- Improved sensitivity and specificity</li> <li>- Long-term security of supply</li> <li>- Animal-free production</li> </ul> <p>For more information <a href="#">see here</a>.</p> <p>Our RabMAb<sup>®</sup> technology is a patented hybridoma-based technology for making rabbit monoclonal antibodies. For details on our patents, please refer to <a href="#">RabMAb<sup>®</sup> patents</a>.</p> <p>Mouse, Rat: We have preliminary internal testing data to indicate this antibody may not react with these species. Please contact us for more information.</p>

#### Properties

Form	Liquid
Storage instructions	Shipped at 4°C. Store at -20°C. Stable for 12 months at -20°C.
Dissociation constant (K <sub>D</sub> )	K <sub>D</sub> = 4.75 x 10 <sup>-11</sup> M



<b>Storage buffer</b>	pH: 7.20 Preservative: 0.05% Sodium azide Constituents: 40% Glycerol (glycerin, glycerine), 9.85% Tris glycine, 50% Tissue culture supernatant
<b>Purity</b>	Protein A purified
<b>Clonality</b>	Monoclonal
<b>Clone number</b>	EPR6630
<b>Isotype</b>	IgG

## Applications

**The Abpromise guarantee** Our **Abpromise guarantee** covers the use of ab124826 in the following tested applications. The application notes include recommended starting dilutions; optimal dilutions/concentrations should be determined by the end user.

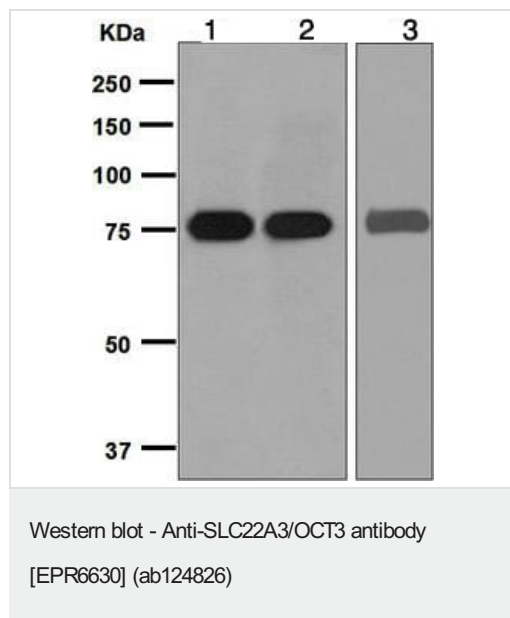
Application	Abreviews	Notes
<b>Flow Cyt (Intra)</b>		1/100. <b>ab172730</b> - Rabbit monoclonal IgG, is suitable for use as an isotype control with this antibody.
<b>WB</b>		1/10000 - 1/50000. Detects a band of approximately 80 kDa (predicted molecular weight: 61 kDa).
<b>IHC-P</b>		1/100 - 1/250. Perform heat mediated antigen retrieval before commencing with IHC staining protocol.

**Application notes** Is unsuitable for IP.

## Target

<b>Function</b>	Mediates potential-dependent transport of a variety of organic cations. May play a significant role in the disposition of cationic neurotoxins and neurotransmitters in the brain.
<b>Tissue specificity</b>	Expressed in placenta, skeletal muscle, prostate, aorta, liver, fetal lung, salivary gland, adrenal gland, kidney and brain cortex. No expression detected in spleen.
<b>Sequence similarities</b>	Belongs to the major facilitator superfamily. Organic cation transporter family.
<b>Cellular localization</b>	Membrane.

## Images



**All lanes :** Anti-SLC22A3/OCT3 antibody [EPR6630] (ab124826) at 1/10000 dilution

**Lane 1 :** Human fetal kidney tissue lysate

**Lane 2 :** Human muscle tissue lysate

**Lane 3 :** Human placenta tissue lysate

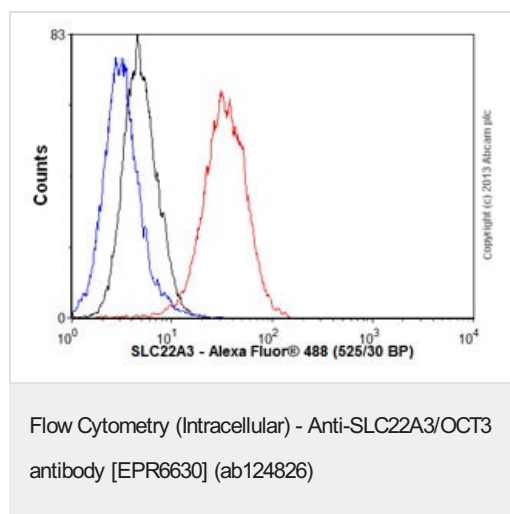
Lysates/proteins at 10 µg per lane.

#### Secondary

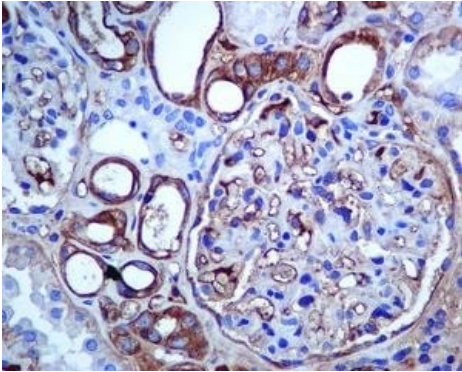
**All lanes :** HRP labelled goat anti-rabbit at 1/2000 dilution

**Predicted band size:** 61 kDa

**Observed band size:** 80 kDa



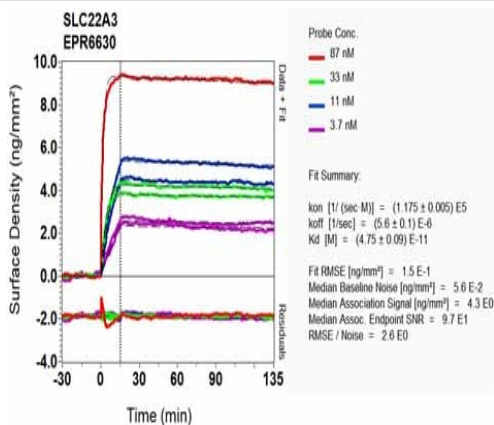
Overlay histogram showing JEG3 cells stained with ab124826 (red line). The cells were fixed with 80% methanol (5 min) and then permeabilized with 0.1% PBS-Tween for 20 min. The cells were then incubated in 1x PBS / 10% normal goat serum / 0.3M glycine to block non-specific protein-protein interactions followed by the antibody (ab124826, 1/100 dilution) for 30 min at 22°C. The secondary antibody used was Alexa Fluor<sup>®</sup> 488 goat anti-rabbit IgG (H&L) ([ab150077](#)) at 1/2000 dilution for 30 min at 22°C. Isotype control antibody (black line) was rabbit IgG (monoclonal) (0.1µg/1x10<sup>6</sup> cells) used under the same conditions. Unlabelled sample (blue line) was also used as a control. Acquisition of >5,000 events were collected using a 20mW Argon ion laser (488nm) and 525/30 bandpass filter.



Immunohistochemistry (Formalin/PFA-fixed paraffin-embedded sections) - Anti-SLC22A3/OCT3 antibody [EPR6630] (ab124826)

ab124826, at 1/100 dilution, staining SLC22A3/OCT3 in paraffin-embedded Human kidney tissue by Immunohistochemistry.

Perform heat mediated antigen retrieval before commencing with IHC staining protocol.



OIR-D Scanning - Anti-SLC22A3/OCT3 antibody [EPR6630] (ab124826)

Equilibrium disassociation constant ( $K_D$ )

Learn more about  $K_D$

[Click here to learn more about  \$K\_D\$](#)

### Why choose a recombinant antibody?



**Research with confidence**  
Consistent and reproducible results



**Long-term and scalable supply**  
Recombinant technology



**Success from the first experiment**  
Confirmed specificity



**Ethical standards compliant**  
Animal-free production

Anti-SLC22A3/OCT3 antibody [EPR6630]  
(ab124826)

**Please note:** All products are "FOR RESEARCH USE ONLY. NOT FOR USE IN DIAGNOSTIC PROCEDURES"

### Our Abpromise to you: Quality guaranteed and expert technical support

---

- Replacement or refund for products not performing as stated on the datasheet
- Valid for 12 months from date of delivery
- Response to your inquiry within 24 hours
- We provide support in Chinese, English, French, German, Japanese and Spanish
- Extensive multi-media technical resources to help you
- We investigate all quality concerns to ensure our products perform to the highest standards

If the product does not perform as described on this datasheet, we will offer a refund or replacement. For full details of the Abpromise, please visit <https://www.abcam.com/abpromise> or contact our technical team.

### Terms and conditions

---

- Guarantee only valid for products bought direct from Abcam or one of our authorized distributors