

## Product datasheet

### Anti-SLC25A12 antibody ab234975

[3 Images](#)

#### Overview

---

<b>Product name</b>	Anti-SLC25A12 antibody
<b>Description</b>	Rabbit polyclonal to SLC25A12
<b>Host species</b>	Rabbit
<b>Tested applications</b>	<b>Suitable for:</b> IHC-P, WB
<b>Species reactivity</b>	<b>Reacts with:</b> Mouse, Rat, Human
<b>Immunogen</b>	Recombinant fragment corresponding to Human SLC25A12 aa 202-317. Database link: <a href="#">O75746</a>
<b>Positive control</b>	WB: HEK-293 whole cell lysate. Mouse and rat heart and kidney tissue lysates. IHC-P: Human pancreatic cancer and brain tissues.
<b>General notes</b>	<p>The Life Science industry has been in the grips of a reproducibility crisis for a number of years. Abcam is leading the way in addressing this with our range of recombinant monoclonal antibodies and knockout edited cell lines for gold-standard validation. Please check that this product meets your needs before purchasing.</p> <p>If you have any questions, special requirements or concerns, please send us an inquiry and/or contact our Support team ahead of purchase. Recommended alternatives for this product can be found below, along with publications, customer reviews and Q&amp;As</p>

#### Properties

---

<b>Form</b>	Liquid
<b>Storage instructions</b>	Shipped at 4°C. Store at +4°C short term (1-2 weeks). Upon delivery aliquot. Store at -20°C long term. Avoid freeze / thaw cycle.
<b>Storage buffer</b>	pH: 7.40 Preservative: 0.03% Proclin 300 Constituents: 50% Glycerol (glycerin, glycerine), PBS
<b>Purity</b>	Protein G purified
<b>Purification notes</b>	Purity >95%.
<b>Clonality</b>	Polyclonal
<b>Isotype</b>	IgG

## Applications

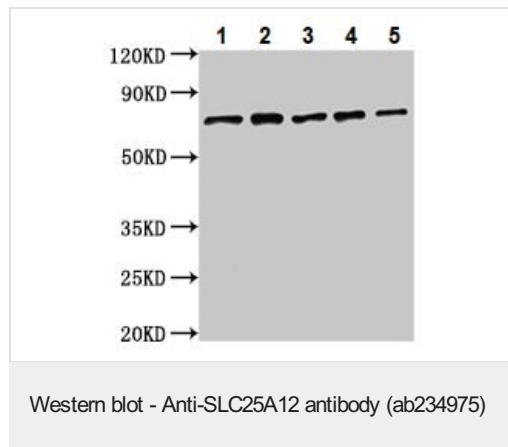
**The Abpromise guarantee** Our **Abpromise guarantee** covers the use of ab234975 in the following tested applications. The application notes include recommended starting dilutions; optimal dilutions/concentrations should be determined by the end user.

Application	Abreviews	Notes
IHC-P		1/20 - 1/200.
WB		1/500 - 1/5000. Predicted molecular weight: 74 kDa.

## Target

<b>Function</b>	Calcium-dependent mitochondrial aspartate and glutamate carrier. May have a function in the urea cycle.
<b>Tissue specificity</b>	High levels in heart and skeletal muscle, low in brain and very low in kidney.
<b>Involvement in disease</b>	Defects in SLC25A12 are the cause of aspartate-glutamate carrier 1 deficiency (AGC1D) [MIM:612949]; also called global cerebral hypomyelination. This syndrome consists of a child severe psychomotor retardation, hypotonia and hypomyelination of the central nervous system.
<b>Sequence similarities</b>	Belongs to the mitochondrial carrier family. Contains 4 EF-hand domains. Contains 3 Solcar repeats.
<b>Cellular localization</b>	Mitochondrion inner membrane.

## Images



**All lanes** : Anti-SLC25A12 antibody (ab234975) at 1/500 dilution

**Lane 1** : HEK-293 (Human epithelial cell line from embryonic kidney) whole cell lysate

**Lane 2** : Rat heart tissue lysate

**Lane 3** : Rat kidney tissue lysate

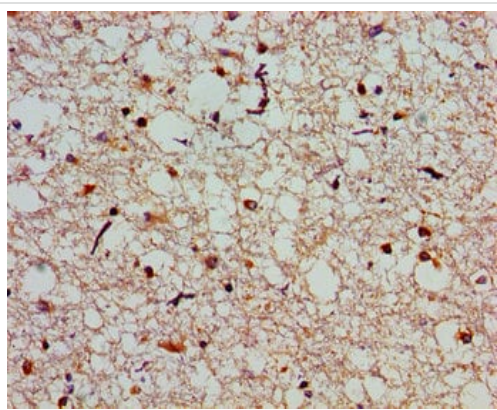
**Lane 4** : Mouse kidney tissue lysate

**Lane 5** : Mouse heart tissue lysate

### Secondary

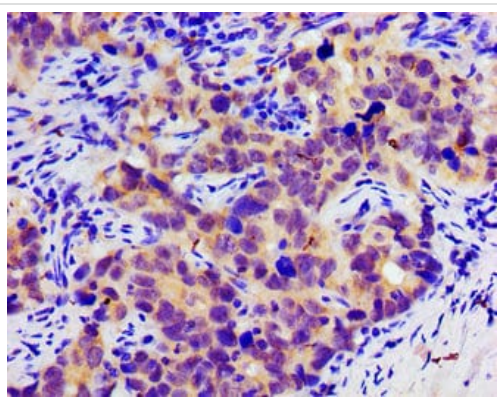
**All lanes** : Goat polyclonal to rabbit IgG at 1/50000 dilution

**Predicted band size:** 74 kDa



Immunohistochemistry (Formalin/PFA-fixed paraffin-embedded sections) - Anti-SLC25A12 antibody (ab234975)

Paraffin-embedded human brain tissue stained for SLC25A12 with ab234975 at 1/100 dilution in immunohistochemical analysis.



Immunohistochemistry (Formalin/PFA-fixed paraffin-embedded sections) - Anti-SLC25A12 antibody (ab234975)

Paraffin-embedded human pancreatic cancer tissue stained for SLC25A12 with ab234975 at 1/100 dilution in immunohistochemical analysis.

**Please note:** All products are "FOR RESEARCH USE ONLY. NOT FOR USE IN DIAGNOSTIC PROCEDURES"

### **Our Abpromise to you: Quality guaranteed and expert technical support**

---

- Replacement or refund for products not performing as stated on the datasheet
- Valid for 12 months from date of delivery
- Response to your inquiry within 24 hours
- We provide support in Chinese, English, French, German, Japanese and Spanish
- Extensive multi-media technical resources to help you
- We investigate all quality concerns to ensure our products perform to the highest standards

If the product does not perform as described on this datasheet, we will offer a refund or replacement. For full details of the Abpromise,

please visit <https://www.abcam.com/abpromise> or contact our technical team.

## **Terms and conditions**

---

- Guarantee only valid for products bought direct from Abcam or one of our authorized distributors