


# Anti-SLC25A15 antibody ab228604

[1 References](#) [2 Images](#)

## Overview

<b>Product name</b>	Anti-SLC25A15 antibody
<b>Description</b>	Rabbit polyclonal to SLC25A15
<b>Host species</b>	Rabbit
<b>Tested applications</b>	<b>Suitable for:</b> IHC-P, WB
<b>Species reactivity</b>	<b>Reacts with:</b> Mouse, Human <b>Predicted to work with:</b> Rat, Sheep, Cow, Pig 
<b>Immunogen</b>	Recombinant fragment within Human SLC25A15 (internal sequence). The exact sequence is proprietary. Database link: <a href="#">Q9Y619</a>
<b>Positive control</b>	WB: Raji whole cell lysate. IHC-P: Mouse heart tissue.
<b>General notes</b>	<p>The Life Science industry has been in the grips of a reproducibility crisis for a number of years. Abcam is leading the way in addressing this with our range of recombinant monoclonal antibodies and knockout edited cell lines for gold-standard validation. Please check that this product meets your needs before purchasing.</p> <p>If you have any questions, special requirements or concerns, please send us an inquiry and/or contact our Support team ahead of purchase. Recommended alternatives for this product can be found below, along with publications, customer reviews and Q&amp;As</p>

## Properties

<b>Form</b>	Liquid
<b>Storage instructions</b>	Shipped at 4°C. Store at +4°C short term (1-2 weeks). Upon delivery aliquot. Store at -20°C long term. Avoid freeze / thaw cycle.
<b>Storage buffer</b>	pH: 7.00 Preservative: 0.01% Thimerosal (merthiolate) Constituents: 1.21% Tris, 0.75% Glycine, 20% Glycerol (glycerin, glycerine)
<b>Purity</b>	Immunogen affinity purified
<b>Clonality</b>	Polyclonal
<b>Isotype</b>	IgG

## Applications

### The Abpromise guarantee

Our **Abpromise guarantee** covers the use of ab228604 in the following tested applications.

The application notes include recommended starting dilutions; optimal dilutions/concentrations should be determined by the end user.

Application	Abreviews	Notes
IHC-P		1/100 - 1/1000.
WB		1/500 - 1/3000. Predicted molecular weight: 32 kDa.

## Target

### Function

Ornithine transport across inner mitochondrial membrane, from the cytoplasm to the matrix.

### Involvement in disease

Hyperornithinemia-hyperammonemia-homocitrullinuria syndrome

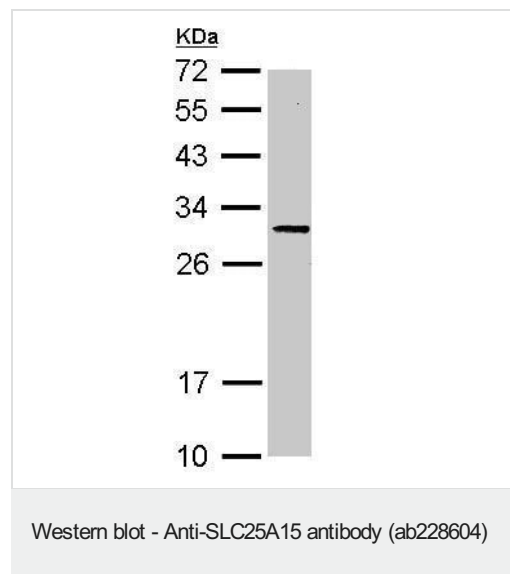
### Sequence similarities

Belongs to the mitochondrial carrier (TC 2.A.29) family.  
Contains 3 Solcar repeats.

### Cellular localization

Mitochondrion inner membrane.

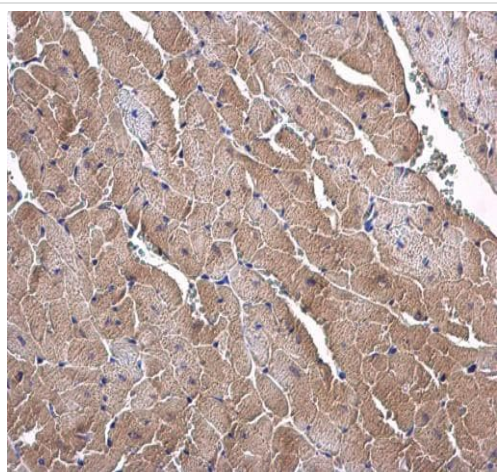
## Images



Anti-SLC25A15 antibody (ab228604) at 1/1000 dilution + Raji  
(human Burkitt's lymphoma cell line) whole cell lysate at 30 µg

**Predicted band size:** 32 kDa

12% SDS-PAGE gel.



Immunohistochemistry (Formalin/PFA-fixed paraffin-embedded sections) - Anti-SLC25A15 antibody (ab228604)

Paraffin-embedded mouse heart tissue stained for SLC25A15 using ab228604 at 1/500 dilution in immunohistochemical analysis.

**Please note:** All products are "FOR RESEARCH USE ONLY. NOT FOR USE IN DIAGNOSTIC PROCEDURES"

### Our Abpromise to you: Quality guaranteed and expert technical support

---

- Replacement or refund for products not performing as stated on the datasheet
- Valid for 12 months from date of delivery
- Response to your inquiry within 24 hours
- We provide support in Chinese, English, French, German, Japanese and Spanish
- Extensive multi-media technical resources to help you
- We investigate all quality concerns to ensure our products perform to the highest standards

If the product does not perform as described on this datasheet, we will offer a refund or replacement. For full details of the Abpromise, please visit <https://www.abcam.com/abpromise> or contact our technical team.

### Terms and conditions

---

- Guarantee only valid for products bought direct from Abcam or one of our authorized distributors