

## Product datasheet

### Anti-SLC25A21/ODC antibody ab167033

★★★★★ [1 Abreviews](#) [3 References](#) [2 Images](#)

#### Overview

<b>Product name</b>	Anti-SLC25A21/ODC antibody
<b>Description</b>	Rabbit polyclonal to SLC25A21/ODC
<b>Host species</b>	Rabbit
<b>Tested applications</b>	<b>Suitable for:</b> WB, IHC-P
<b>Species reactivity</b>	<b>Reacts with:</b> Human
<b>Immunogen</b>	Synthetic peptide. This information is proprietary to Abcam and/or its suppliers.
<b>Positive control</b>	Human spleen tissue; HepG2 cell extract.
<b>General notes</b>	<p>The Life Science industry has been in the grips of a reproducibility crisis for a number of years. Abcam is leading the way in addressing this with our range of recombinant monoclonal antibodies and knockout edited cell lines for gold-standard validation. Please check that this product meets your needs before purchasing.</p> <p>If you have any questions, special requirements or concerns, please send us an inquiry and/or contact our Support team ahead of purchase. Recommended alternatives for this product can be found below, along with publications, customer reviews and Q&amp;As</p>

#### Properties

<b>Form</b>	Liquid
<b>Storage instructions</b>	Shipped at 4°C. Store at -20°C.
<b>Storage buffer</b>	<p>pH: 7.40</p> <p>Preservative: 0.02% Sodium azide</p> <p>Constituents: 49% PBS, 50% Glycerol (glycerin, glycerine), 0.88% Sodium chloride</p> <p>PBS without Mg<sup>2+</sup> and Ca<sup>2+</sup>.</p>
<b>Purity</b>	Immunogen affinity purified
<b>Clonality</b>	Polyclonal
<b>Isotype</b>	IgG

#### Applications

## The Abpromise guarantee

Our **Abpromise guarantee** covers the use of ab167033 in the following tested applications.

The application notes include recommended starting dilutions; optimal dilutions/concentrations should be determined by the end user.

Application	Abreviews	Notes
WB	★★★★★ (1)	1/500 - 1/1000. Predicted molecular weight: 33 kDa.
IHC-P		Use a concentration of 5 µg/ml.

## Target

### Function

Transports C5-C7 oxodicarboxylates across the inner membranes of mitochondria. Can transport 2-oxoadipate, 2-oxoglutarate, adipate, glutarate, and to a lesser extent, pimelate, 2-oxopimelate, 2-aminoadipate, oxaloacetate, and citrate.

### Tissue specificity

Ubiquitous.

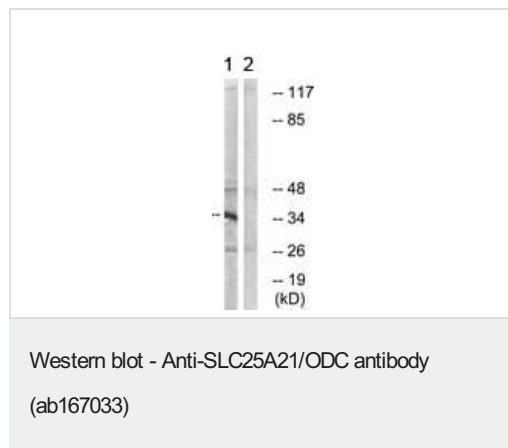
### Sequence similarities

Belongs to the mitochondrial carrier family.  
Contains 3 Solcar repeats.

### Cellular localization

Mitochondrion inner membrane.

## Images

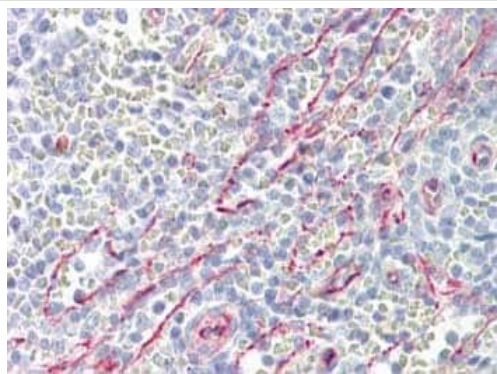


**All lanes :** Anti-SLC25A21/ODC antibody (ab167033) at 1/500 dilution

**Lane 1 :** HepG2 cell extract

**Lane 2 :** HepG2 cell extract with immunizing peptide

**Predicted band size:** 33 kDa



Immunohistochemical analysis of formalin-fixed, paraffin-embedded Human spleen tissue labeling SLC25A21/ODC with ab167033 at 5 µg/ml.

Immunohistochemistry (Formalin/PFA-fixed paraffin-embedded sections) - Anti-SLC25A21/ODC antibody (ab167033)

**Please note:** All products are "FOR RESEARCH USE ONLY. NOT FOR USE IN DIAGNOSTIC PROCEDURES"

### Our Abpromise to you: Quality guaranteed and expert technical support

---

- Replacement or refund for products not performing as stated on the datasheet
- Valid for 12 months from date of delivery
- Response to your inquiry within 24 hours
- We provide support in Chinese, English, French, German, Japanese and Spanish
- Extensive multi-media technical resources to help you
- We investigate all quality concerns to ensure our products perform to the highest standards

If the product does not perform as described on this datasheet, we will offer a refund or replacement. For full details of the Abpromise, please visit <https://www.abcam.com/abpromise> or contact our technical team.

### Terms and conditions

---

- Guarantee only valid for products bought direct from Abcam or one of our authorized distributors