

Anti-SLC27A6/FATP6 antibody ab167099

[1 References](#) [1 Image](#)

Overview

Product name	Anti-SLC27A6/FATP6 antibody
Description	Rabbit polyclonal to SLC27A6/FATP6
Host species	Rabbit
Specificity	ab167099 is predicted to not cross-react with other SLC27 protein family members.
Tested applications	Suitable for: WB
Species reactivity	Reacts with: Mouse
Immunogen	Synthetic peptide corresponding to Human SLC27A6/FATP6 (N terminal). Database link: NP_054750
Positive control	A20 cell lysate.
General notes	<p>The Life Science industry has been in the grips of a reproducibility crisis for a number of years. Abcam is leading the way in addressing this with our range of recombinant monoclonal antibodies and knockout edited cell lines for gold-standard validation. Please check that this product meets your needs before purchasing.</p> <p>If you have any questions, special requirements or concerns, please send us an inquiry and/or contact our Support team ahead of purchase. Recommended alternatives for this product can be found below, along with publications, customer reviews and Q&As</p>

Properties

Form	Liquid
Storage instructions	Shipped at 4°C. Store at +4°C short term (1-2 weeks). Upon delivery aliquot. Store at -20°C long term.
Storage buffer	pH: 7.2 Preservative: 0.02% Sodium azide Constituent: 99% PBS
Purity	Immunogen affinity purified
Clonality	Polyclonal
Isotype	IgG

Applications

The Abpromise guarantee

Our **Abpromise guarantee** covers the use of ab167099 in the following tested applications.

The application notes include recommended starting dilutions; optimal dilutions/concentrations should be determined by the end user.

Application	Abreviews	Notes
WB		Use a concentration of 1 - 2 µg/ml. Predicted molecular weight: 70 kDa.

Target

Function

Involved in translocation of long-chain fatty acids (LFCA) across the plasma membrane. Thought to function as the predominant fatty acid protein transporter in heart.

Tissue specificity

Strongly expressed in heart and localizes to cardiac myocytes. Expressed at moderate levels in placenta, testis, and adrenal glands. Expressed at very low levels in kidney, bladder and uterus.

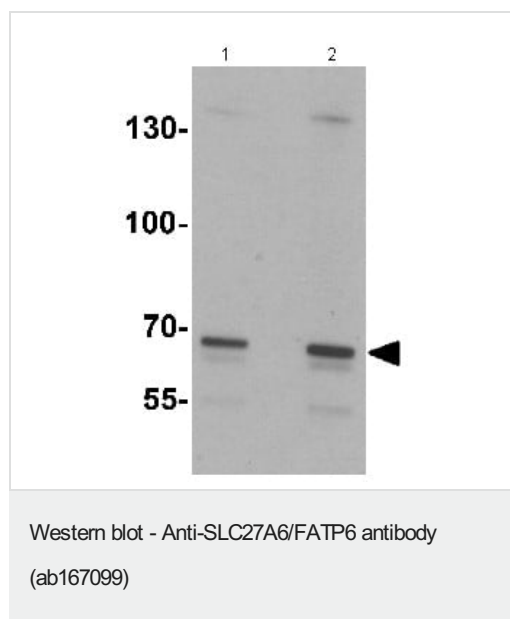
Sequence similarities

Belongs to the ATP-dependent AMP-binding enzyme family.

Cellular localization

Membrane. Cell membrane > sarcolemma. In heart is exclusively located on the sarcolemma in areas juxtaposed with small blood vessels where it colocalizes CD36.

Images



Lane 1 : Anti-SLC27A6/FATP6 antibody (ab167099) at 1 µg/ml

Lane 2 : Anti-SLC27A6/FATP6 antibody (ab167099) at 2 µg/ml

Lane 1 : A20 (Mouse reticulum sarcoma cell line) cell lysate

Lane 2 : A20 cell lysate

Lysates/proteins at 15 µg per lane.

Predicted band size: 70 kDa

Please note: All products are "FOR RESEARCH USE ONLY. NOT FOR USE IN DIAGNOSTIC PROCEDURES"

Our Abpromise to you: Quality guaranteed and expert technical support

- Replacement or refund for products not performing as stated on the datasheet
- Valid for 12 months from date of delivery
- Response to your inquiry within 24 hours

- We provide support in Chinese, English, French, German, Japanese and Spanish
- Extensive multi-media technical resources to help you
- We investigate all quality concerns to ensure our products perform to the highest standards

If the product does not perform as described on this datasheet, we will offer a refund or replacement. For full details of the Abpromise, please visit <https://www.abcam.com/abpromise> or contact our technical team.

Terms and conditions

- Guarantee only valid for products bought direct from Abcam or one of our authorized distributors