


Anti-SLC31A1 / CTR1 antibody ab133385

[4 References](#) [2 Images](#)

Overview

Product name	Anti-SLC31A1 / CTR1 antibody
Description	Rabbit polyclonal to SLC31A1 / CTR1
Host species	Rabbit
Tested applications	Suitable for: IHC-P
Species reactivity	Reacts with: Human Predicted to work with: Mouse, Rat, Rabbit, Horse, Chicken, Hamster, Cow, Dog, Turkey, Pig, Xenopus laevis, Monkey, Gorilla, Opossum, Common marmoset, Orangutan, Platypus, Elephant 
Immunogen	Synthetic 16 amino acid peptide from internal region of Human SLC31A1/ CTR1
Positive control	Human placenta tissue and Human lung (respiratory epithelium) tissue
General notes	<p>The Life Science industry has been in the grips of a reproducibility crisis for a number of years. Abcam is leading the way in addressing this with our range of recombinant monoclonal antibodies and knockout edited cell lines for gold-standard validation. Please check that this product meets your needs before purchasing.</p> <p>If you have any questions, special requirements or concerns, please send us an inquiry and/or contact our Support team ahead of purchase. Recommended alternatives for this product can be found below, along with publications, customer reviews and Q&As</p>

Properties

Form	Liquid
Storage instructions	Shipped at 4°C. Upon delivery aliquot and store at -80°C. Avoid freeze / thaw cycles.
Storage buffer	pH: 7.4 Preservative: 0.1% Sodium azide Constituent: 99% PBS
Purity	Immunogen affinity purified
Clonality	Polyclonal
Isotype	IgG

Applications

The Abpromise guarantee

Our **Abpromise guarantee** covers the use of ab133385 in the following tested applications.

The application notes include recommended starting dilutions; optimal dilutions/concentrations should be determined by the end user.

Application	Abreviews	Notes
IHC-P		Use a concentration of 15 µg/ml. Perform heat mediated antigen retrieval with citrate buffer pH 6 before commencing with IHC staining protocol.

Target

Function

High-affinity, saturable copper transporter involved in dietary copper uptake.

Sequence similarities

Belongs to the copper transporter (Ctr) (TC 1.A.56) family. SLC31A subfamily.

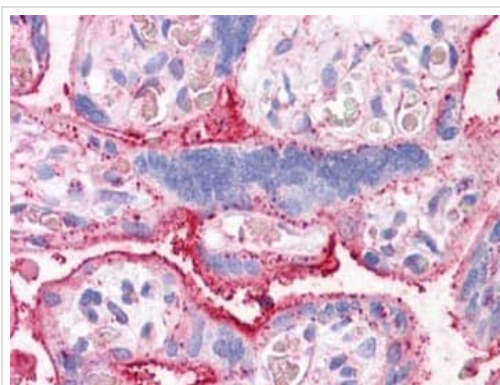
Post-translational modifications

O-Glycosylation at Thr-27 protects from proteolytic cleavage in the N-terminal extracellular domain.

Cellular localization

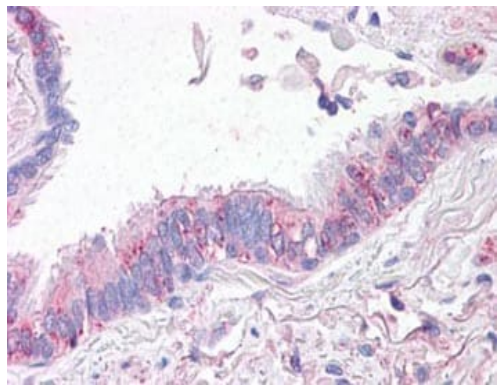
Cell membrane. Localizes to the apical membrane in intestinal epithelial cells.

Images



Immunohistochemical analysis of formalin-fixed, paraffin embedded Human placenta tissue labelling SLC31A1 / CTR1 with ab133385 at 15 µg/ml. Followed by biotinylated goat anti-rabbit IgG secondary antibody, alkaline phosphatase-streptavidin and chromogen.

Immunohistochemistry (Formalin/PFA-fixed paraffin-embedded sections) - Anti-SLC31A1 / CTR1 antibody (ab133385)



Immunohistochemistry (Formalin/PFA-fixed paraffin-embedded sections) - Anti-SLC31A1 / CTR1 antibody (ab133385)

Immunohistochemical analysis of formalin-fixed, paraffin embedded Human lung, respiratory epithelium, tissue labelling SLC31A1 / CTR1 with ab133385 at 15 µg/ml. Followed by biotinylated goat anti-rabbit IgG secondary antibody, alkaline phosphatase-streptavidin and chromogen.

Please note: All products are "FOR RESEARCH USE ONLY. NOT FOR USE IN DIAGNOSTIC PROCEDURES"

Our Abpromise to you: Quality guaranteed and expert technical support

- Replacement or refund for products not performing as stated on the datasheet
- Valid for 12 months from date of delivery
- Response to your inquiry within 24 hours
- We provide support in Chinese, English, French, German, Japanese and Spanish
- Extensive multi-media technical resources to help you
- We investigate all quality concerns to ensure our products perform to the highest standards

If the product does not perform as described on this datasheet, we will offer a refund or replacement. For full details of the Abpromise, please visit <https://www.abcam.com/abpromise> or contact our technical team.

Terms and conditions

- Guarantee only valid for products bought direct from Abcam or one of our authorized distributors