

### Anti-SLC39A14/ZIP-14 antibody ab106568

[5 References](#) [4 Images](#)

#### Overview

<b>Product name</b>	Anti-SLC39A14/ZIP-14 antibody
<b>Description</b>	Rabbit polyclonal to SLC39A14/ZIP-14
<b>Host species</b>	Rabbit
<b>Specificity</b>	At least three isoforms of SLC39A14/ZIP-14 are known to exist; this antibody will detect all isoforms.
<b>Tested applications</b>	<b>Suitable for:</b> WB, IHC-P
<b>Species reactivity</b>	<b>Reacts with:</b> Mouse, Human
<b>Immunogen</b>	Synthetic peptide. This information is proprietary to Abcam and/or its suppliers.
<b>Positive control</b>	WB: Human spleen tissue lysate. IHC-P: Mouse liver tissue.
<b>General notes</b>	<p>The Life Science industry has been in the grips of a reproducibility crisis for a number of years. Abcam is leading the way in addressing this with our range of recombinant monoclonal antibodies and knockout edited cell lines for gold-standard validation. Please check that this product meets your needs before purchasing.</p> <p>If you have any questions, special requirements or concerns, please send us an inquiry and/or contact our Support team ahead of purchase. Recommended alternatives for this product can be found below, along with publications, customer reviews and Q&amp;As</p>

#### Properties

<b>Form</b>	Liquid
<b>Storage instructions</b>	Shipped at 4°C. Store at 4°C (stable for up to 12 months).
<b>Storage buffer</b>	pH: 7.2 Preservative: 0.02% Sodium azide Constituent: PBS
<b>Purity</b>	Immunogen affinity purified
<b>Clonality</b>	Polyclonal
<b>Isotype</b>	IgG

#### Applications

## The Abpromise guarantee

Our **Abpromise guarantee** covers the use of ab106568 in the following tested applications.

The application notes include recommended starting dilutions; optimal dilutions/concentrations should be determined by the end user.

Application	Abreviews	Notes
WB		Use a concentration of 1 - 2 µg/ml. Predicted molecular weight: 54 kDa. <b>WB suitable for Human samples only</b>
IHC-P		Use a concentration of 2.5 - 20 µg/ml. <b>IHC-P suitable for Mouse samples only</b>

## Target

### Function

May be able to transport iron (By similarity). Acts as a zinc-influx transporter.

### Tissue specificity

Ubiquitously expressed, with increased expression in liver, pancreas, fetal liver, thyroid gland, left and right ventricle, right atrium and fetal heart. Weakly expressed in spleen, thymus, and peripheral blood leukocytes.

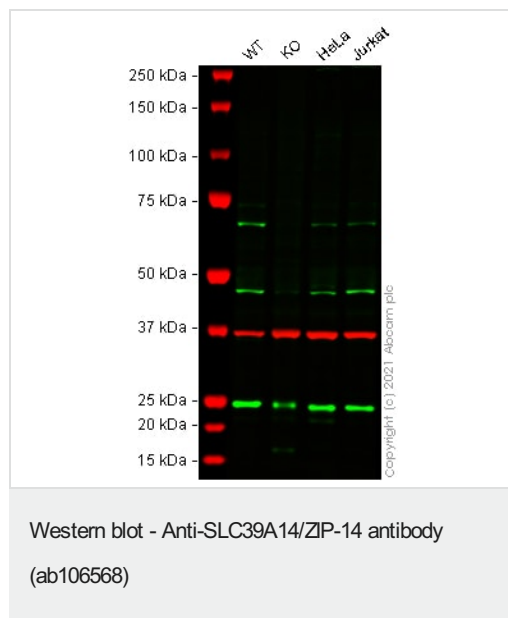
### Sequence similarities

Belongs to the ZIP transporter (TC 2.A.5) family.

### Cellular localization

Cell membrane. Cell projection > lamellipodium. Localized to the plasma membrane and also found colocalized with F-actin concentrated on lamellipodiae.

## Images



**All lanes :** Anti-SLC39A14/ZIP-14 antibody (ab106568)

**Lane 1 :** Wild-type HEK-293T cell lysate

**Lane 2 :** SLC39A14 knockout HEK-293T cell lysate

**Lane 3 :** HeLa cell lysate

**Lane 4 :** Jurkat cell lysate

Lysates/proteins at 20 µg per lane.

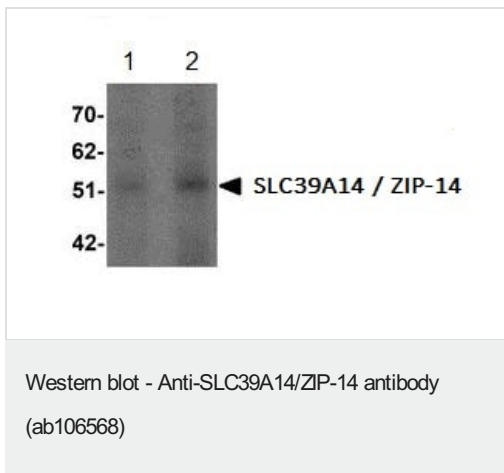
Performed under reducing conditions.

**Predicted band size:** 54 kDa

**Observed band size:** 68 kDa

False colour image of Western blot: Anti-SLC39A14/ZIP-14 antibody staining at 1 µg/ml, shown in green; Mouse anti-GAPDH antibody [6C5] ([ab8245](#)) loading control staining at 1/20000 dilution, shown in red. In Western blot, ab106568 was shown to bind specifically to SLC39A14/ZIP-14. A band was observed at 68 kDa

in wild-type HEK-293T cell lysates with no signal observed at this size in SLC39A14 knockout cell line **ab266126** (knockout cell lysate **ab258683**). To generate this image, wild-type and SLC39A14 knockout HEK-293T cell lysates were analysed. First, samples were run on an SDS-PAGE gel then transferred onto a nitrocellulose membrane. Membranes were blocked in 3 % milk in TBS-0.1 % Tween®20 (TBS-T) before incubation with primary antibodies overnight at 4 °C. Blots were washed four times in TBS-T, incubated with secondary antibodies for 1 h at room temperature, washed again four times then imaged. Secondary antibodies used were Goat anti-Rabbit IgG H&L (IRDye® 800CW) preabsorbed (**ab216773**) and Goat anti-Mouse IgG H&L (IRDye® 680RD) preabsorbed (**ab216776**) at 1/20000 dilution.



**Lane 1 :** Anti-SLC39A14/ZIP-14 antibody (ab106568) at 1 µg/ml

**Lane 2 :** Anti-SLC39A14/ZIP-14 antibody (ab106568) at 2 µg/ml

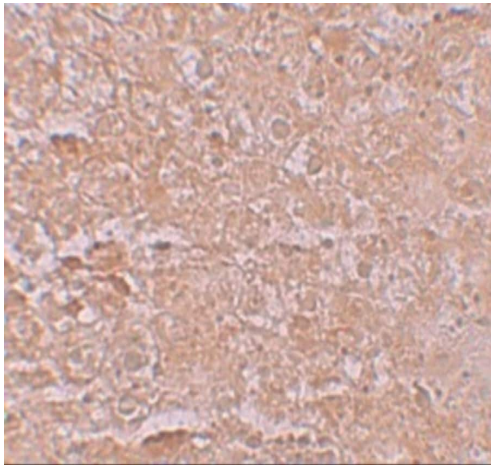
**All lanes :** Human spleen tissue lysate

Lysates/proteins at 15 µg per lane.

**Predicted band size:** 54 kDa

Immunohistochemistry (Formalin/PFA-fixed paraffin-embedded sections) - Anti-SLC39A14/ZIP-14 antibody (ab106568)

Immunohistochemical analysis of SLC39A14/ZIP-14 in mouse liver tissue using ab106568 at 20 µg/ml.



Immunohistochemistry of mouse liver tissue using ab106568 at 2.5 µg/ml

Immunohistochemistry (Formalin/PFA-fixed paraffin-embedded sections) - Anti-SLC39A4/ZIP-14 antibody (ab106568)

**Please note:** All products are "FOR RESEARCH USE ONLY. NOT FOR USE IN DIAGNOSTIC PROCEDURES"

#### Our Abpromise to you: Quality guaranteed and expert technical support

---

- Replacement or refund for products not performing as stated on the datasheet
- Valid for 12 months from date of delivery
- Response to your inquiry within 24 hours
- We provide support in Chinese, English, French, German, Japanese and Spanish
- Extensive multi-media technical resources to help you
- We investigate all quality concerns to ensure our products perform to the highest standards

If the product does not perform as described on this datasheet, we will offer a refund or replacement. For full details of the Abpromise, please visit <https://www.abcam.com/abpromise> or contact our technical team.

#### Terms and conditions

---

- Guarantee only valid for products bought direct from Abcam or one of our authorized distributors