


Product datasheet

Anti-SLC39A6/ZIP-6 antibody [SP300] ab227696

Recombinant RabMAb

5 Images

Overview

Product name	Anti-SLC39A6/ZIP-6 antibody [SP300]
Description	Rabbit monoclonal [SP300] to SLC39A6/ZIP-6
Host species	Rabbit
Tested applications	Suitable for: IHC-P, WB Unsuitable for: Flow Cyt
Species reactivity	Reacts with: Human Predicted to work with: Mouse, Rat 
Immunogen	Synthetic peptide. This information is proprietary to Abcam and/or its suppliers.
Positive control	IHC-P: Human breast ductal carcinoma, uterus, and Human breast carcinoma tissue; WB: ZR-75-1 cell lysate;
General notes	<p>This product is a recombinant monoclonal antibody, which offers several advantages including:</p> <ul style="list-style-type: none">- High batch-to-batch consistency and reproducibility- Improved sensitivity and specificity- Long-term security of supply- Animal-free production <p>For more information see here.</p> <p>Our RabMAb[®] technology is a patented hybridoma-based technology for making rabbit monoclonal antibodies. For details on our patents, please refer to RabMAb[®] patents.</p> <p>This product is FOR RESEARCH USE ONLY. For commercial use, please contact partnerships@abcam.com.</p>

Properties

Form	Liquid
Storage instructions	Shipped at 4°C. Store at +4°C short term (1-2 weeks). Upon delivery aliquot. Store at -20°C long term. Avoid freeze / thaw cycle.
Storage buffer	pH: 7.20 Preservative: 0.1% Sodium azide Constituents: 1% BSA, PBS

Purity	Protein A purified
Clonality	Monoclonal
Clone number	SP300
Isotype	IgG

Applications

The Abpromise guarantee Our **Abpromise guarantee** covers the use of ab227696 in the following tested applications.

The application notes include recommended starting dilutions; optimal dilutions/concentrations should be determined by the end user.

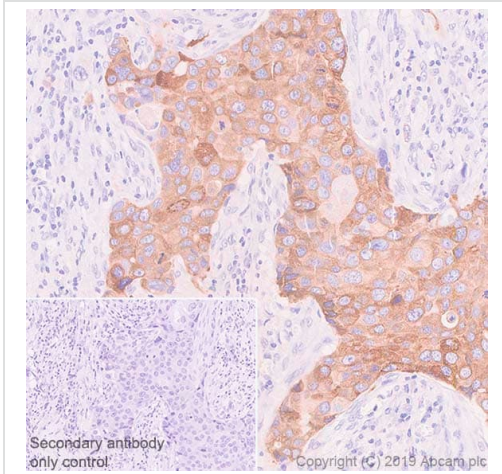
Application	Abreviews	Notes
IHC-P		1/100. Perform heat mediated antigen retrieval by boiling tissue section in EDTA buffer, pH 8.0 for 10 minutes followed by cooling at room temperature for 20 minutes. Primary antibody incubation for 10 minutes at room temperature.
WB		1/400. Predicted molecular weight: 85 kDa. Primary antibody incubation for 1 hour at room temperature.

Application notes Is unsuitable for Flow Cyt.

Target

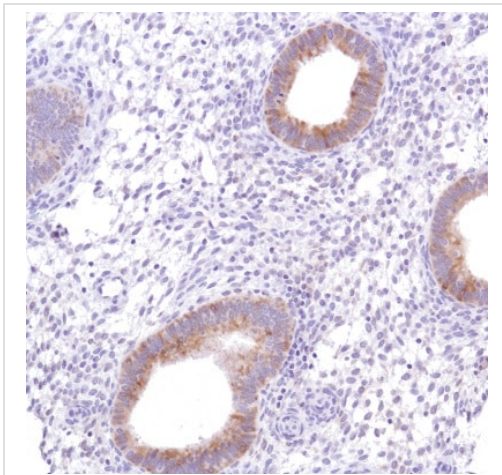
Function	May act as a zinc-influx transporter.
Tissue specificity	Highly expressed in the breast, prostate, placenta, kidney, pituitary and corpus callosum. Weakly expressed in heart and intestine. Also highly expressed in cells derived from an adenocarcinoma of the cervix and lung carcinoma.
Sequence similarities	Belongs to the ZIP transporter (TC 2.A.5) family.
Post-translational modifications	N-glycosylated.
Cellular localization	Cell membrane.

Images



Immunohistochemistry (Formalin/PFA-fixed paraffin-embedded sections) analysis of Human breast carcinoma tissue sections labeling SLC39A6/ZIP-6 with ab227696 at 1/100 dilution (4.05 µg/ml). Heat mediated antigen retrieval was performed Heat mediated antigen retrieval with Tris-EDTA buffer (pH 9.0, epitope retrieval solution 2) for 10 mins. Rabbit specific IHC polymer detection kit HRP/DAB (**ab209101**) was used as the secondary antibody. Negative control: PBS instead of the primary antibody. Hematoxylin was used as a counterstain.

Immunohistochemistry (Formalin/PFA-fixed paraffin-embedded sections) - Anti-SLC39A6/ZIP-6 antibody [SP300] (ab227696)



Formalin-fixed, paraffin-embedded human uterus tissue stained for SLC39A6/ZIP-6 using ab227696 at 1/100 dilution in immunohistochemical analysis.

Immunohistochemistry (Formalin/PFA-fixed paraffin-embedded sections) - Anti-SLC39A6/ZIP-6 antibody [SP300] (ab227696)

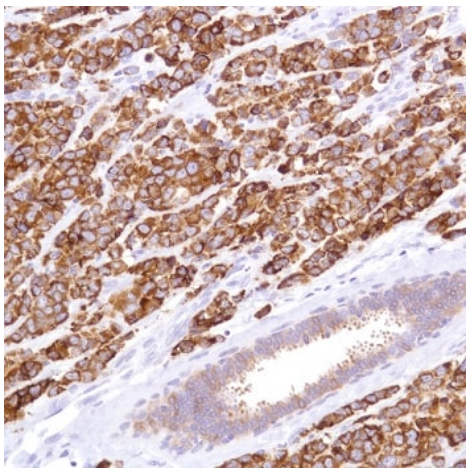
250-
150-
100-
75-
50-
37-
25-
20-
15-
10-



Anti-SLC39A6/ZIP-6 antibody [SP300] (ab227696) at 1/400 dilution + ZR-75-1 cell lysate

Predicted band size: 85 kDa





Western blot - Anti-SLC39A6/ZIP-6 antibody [SP300] (ab227696)



Formalin-fixed, paraffin-embedded human breast ductal carcinoma tissue stained for SLC39A6/ZIP-6 using ab227696 at 1/100 dilution in immunohistochemical analysis.

Immunohistochemistry (Formalin/PFA-fixed paraffin-embedded sections) - Anti-SLC39A6/ZIP-6 antibody [SP300] (ab227696)

Why choose a recombinant antibody?

 <p>Research with confidence Consistent and reproducible results</p>	 <p>Long-term and scalable supply Recombinant technology</p>
 <p>Success from the first experiment Confirmed specificity</p>	 <p>Ethical standards compliant Animal-free production</p>

Anti-SLC39A6/ZIP-6 antibody [SP300] (ab227696)

Please note: All products are "FOR RESEARCH USE ONLY. NOT FOR USE IN DIAGNOSTIC PROCEDURES"

Our Abpromise to you: Quality guaranteed and expert technical support

- Replacement or refund for products not performing as stated on the datasheet
- Valid for 12 months from date of delivery
- Response to your inquiry within 24 hours
- We provide support in Chinese, English, French, German, Japanese and Spanish
- Extensive multi-media technical resources to help you
- We investigate all quality concerns to ensure our products perform to the highest standards

If the product does not perform as described on this datasheet, we will offer a refund or replacement. For full details of the Abpromise, please visit <https://www.abcam.com/abpromise> or contact our technical team.

Terms and conditions

- Guarantee only valid for products bought direct from Abcam or one of our authorized distributors