


Anti-SLC40A1 antibody ab235166

1 Image

Overview

Product name	Anti-SLC40A1 antibody
Description	Rabbit polyclonal to SLC40A1
Host species	Rabbit
Tested applications	Suitable for: WB
Species reactivity	Reacts with: Human Predicted to work with: Mouse, Rat 
Immunogen	Synthetic peptide. This information is proprietary to Abcam and/or its suppliers.
Positive control	WB: CACO2 whole cell lysate.
General notes	<p>The Life Science industry has been in the grips of a reproducibility crisis for a number of years. Abcam is leading the way in addressing this with our range of recombinant monoclonal antibodies and knockout edited cell lines for gold-standard validation. Please check that this product meets your needs before purchasing.</p> <p>If you have any questions, special requirements or concerns, please send us an inquiry and/or contact our Support team ahead of purchase. Recommended alternatives for this product can be found below, along with publications, customer reviews and Q&As</p>

Properties

Form	Liquid
Storage instructions	Shipped at 4°C. Store at +4°C short term (1-2 weeks). Upon delivery aliquot. Store at -20°C long term. Avoid freeze / thaw cycle.
Storage buffer	Preservative: 0.01% Sodium azide Constituent: PBS
Purity	Affinity purified
Clonality	Polyclonal
Isotype	IgG

Applications

The **Abpromise guarantee** Our **Abpromise guarantee** covers the use of ab235166 in the following tested applications.

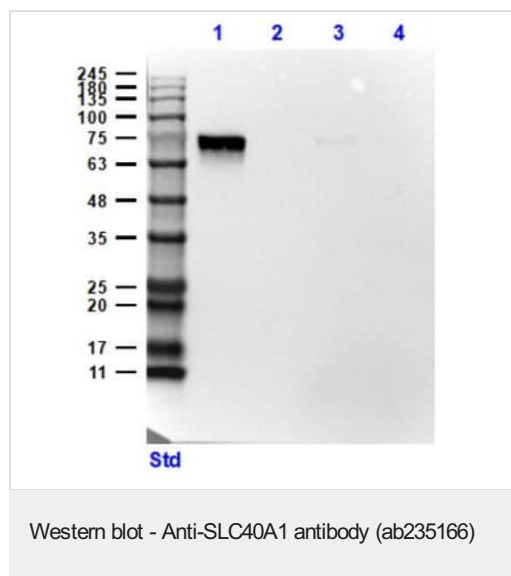
The application notes include recommended starting dilutions; optimal dilutions/concentrations should be determined by the end user.

Application	Abreviews	Notes
WB		Use a concentration of 5 µg/ml. Predicted molecular weight: 63 kDa.

Target

Function	May be involved in iron export from duodenal epithelial cell and also in transfer of iron between maternal and fetal circulation. Mediates iron efflux in the presence of a ferroxidase (hephaestin and/or ceruloplasmin).
Tissue specificity	Expressed in placenta, intestine, muscle and spleen.
Involvement in disease	Defects in SLC40A1 are the cause of hemochromatosis type 4 (HFE4) [MIM:606069]. HFE4 is an autosomal dominant iron-loading disorder characterized by early iron accumulation in reticuloendothelial cells and a marked increase in serum ferritin before elevation of the transferrin saturation.
Sequence similarities	Belongs to the SLC40A transporter family.
Cellular localization	Cell membrane. Localized to the basolateral membrane of polarized epithelial cells.

Images



All lanes : Anti-SLC40A1 antibody (ab235166) at 5 µg/ml

Lane 1 : CACO2 (Human colorectal adenocarcinoma cell line) whole cell lysate

Lane 2 : K562 (Human chronic myelogenous leukemia cell line from bone marrow) whole cell lysate

Lane 3 : HepG2 (Human liver hepatocellular carcinoma cell line) whole cell lysate

Lane 4 : MCF7 (Human breast adenocarcinoma cell line) whole cell lysate

Lysates/proteins at 35 µg per lane.

Secondary

All lanes : Goat anti-Rabbit IgG [H&L] HRP at 1/70000 dilution

Predicted band size: 63 kDa

Exposure time: 40 seconds

Please note: All products are "FOR RESEARCH USE ONLY. NOT FOR USE IN DIAGNOSTIC PROCEDURES"

Our Abpromise to you: Quality guaranteed and expert technical support

- Replacement or refund for products not performing as stated on the datasheet
- Valid for 12 months from date of delivery
- Response to your inquiry within 24 hours
- We provide support in Chinese, English, French, German, Japanese and Spanish
- Extensive multi-media technical resources to help you
- We investigate all quality concerns to ensure our products perform to the highest standards

If the product does not perform as described on this datasheet, we will offer a refund or replacement. For full details of the Abpromise, please visit <https://www.abcam.com/abpromise> or contact our technical team.

Terms and conditions

- Guarantee only valid for products bought direct from Abcam or one of our authorized distributors