

Anti-SLC4A7/NBCn1 antibody ab82335

[8 References](#) [2 Images](#)

Overview

Product name	Anti-SLC4A7/NBCn1 antibody
Description	Rabbit polyclonal to SLC4A7/NBCn1
Host species	Rabbit
Tested applications	Suitable for: WB, IHC-P
Species reactivity	Reacts with: Human
Immunogen	Synthetic peptide corresponding to Human SLC4A7/NBCn1 aa 1150 to the C-terminus (C terminal) conjugated to keyhole limpet haemocyanin. (Peptide available as ab96634)
Positive control	This antibody gave a positive signal in the following whole cell lysates: Caco2 and HEK293.
General notes	<p>The Life Science industry has been in the grips of a reproducibility crisis for a number of years. Abcam is leading the way in addressing this with our range of recombinant monoclonal antibodies and knockout edited cell lines for gold-standard validation. Please check that this product meets your needs before purchasing.</p> <p>If you have any questions, special requirements or concerns, please send us an inquiry and/or contact our Support team ahead of purchase. Recommended alternatives for this product can be found below, along with publications, customer reviews and Q&As</p>

Properties

Form	Liquid
Storage instructions	Shipped at 4°C. Store at +4°C short term (1-2 weeks). Upon delivery aliquot. Store at -20°C or -80°C. Avoid freeze / thaw cycle.
Storage buffer	<p>pH: 7.40</p> <p>Preservative: 0.02% Sodium azide</p> <p>Constituent: PBS</p> <p>Batches of this product that have a concentration < 1mg/ml may have BSA added as a stabilising agent. If you would like information about the formulation of a specific lot, please contact our scientific support team who will be happy to help.</p>
Purity	Immunogen affinity purified
Clonality	Polyclonal

Isotype

IgG

Applications

The Abpromise guarantee

Our **Abpromise guarantee** covers the use of ab82335 in the following tested applications.

The application notes include recommended starting dilutions; optimal dilutions/concentrations should be determined by the end user.

Application	Abreviews	Notes
WB		Use a concentration of 1 µg/ml. Detects a band of approximately 136 kDa (predicted molecular weight: 136 kDa).
IHC-P		Use a concentration of 5 µg/ml. Perform heat mediated antigen retrieval before commencing with IHC staining protocol.

Target

Function

Electroneutral sodium- and bicarbonate-dependent cotransporter with a Na(+):HCO₃(-) 1:1 stoichiometry. Regulates intracellular pH and may play a role in bicarbonate salvage in secretory epithelia. May also have an associated sodium channel activity.

Tissue specificity

Highly expressed in testis and spleen. Also expressed in retina, colon, small intestine, ovary, thymus, prostate, muscle, heart and kidney. Isoform 1 is expressed in skeletal muscle and heart muscle.

Sequence similarities

Belongs to the anion exchanger (TC 2.A.31) family.

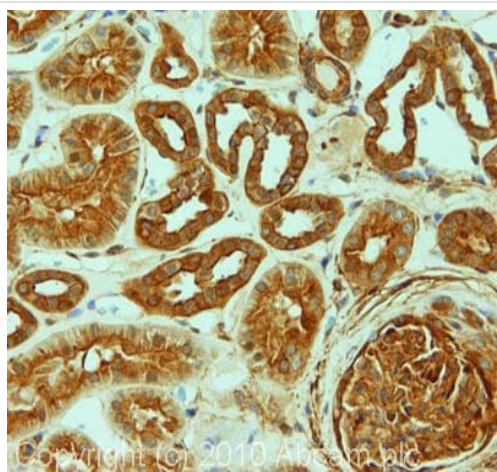
Domain

The PDZ-binding motif mediates interaction with the CFTR, SLC9A3R1/EBP50 complex and probably with USH1C.

Cellular localization

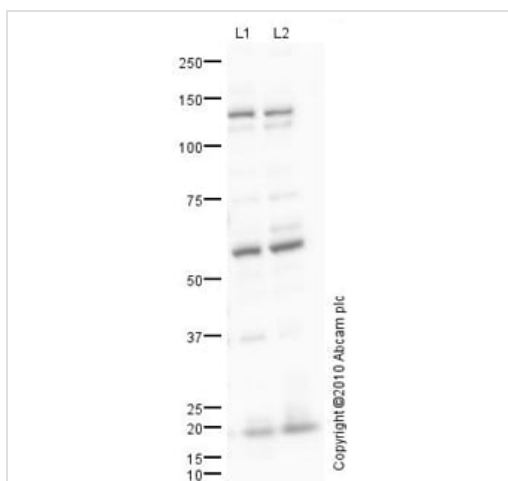
Basolateral cell membrane. Apical cell membrane. Cell projection, stereocilium. Also described at the apical cell membrane. Localizes to the stereocilia of cochlear outer hair cells and to the lateral membrane of cochlear inner hair cells (By similarity).

Images



Immunohistochemistry (Formalin/PFA-fixed paraffin-embedded sections) - Anti-SLC4A7/NBCn1 antibody (ab82335)

IHC image of SLC4A7/NBCn1 staining in human normal kidney formalin fixed paraffin embedded tissue section, performed on a Leica Bond™ system using the standard protocol F. The section was pre-treated using heat mediated antigen retrieval with sodium citrate buffer (pH6, epitope retrieval solution 1) for 20 mins. The section was then incubated with ab82335, 5µg/ml, for 15 mins at room temperature and detected using an HRP conjugated compact polymer system. DAB was used as the chromogen. The section was then counterstained with haematoxylin and mounted with DPX.



Western blot - Anti-SLC4A7/NBCn1 antibody (ab82335)

All lanes : Anti-SLC4A7/NBCn1 antibody (ab82335) at 1 µg/ml

Lane 1 : Caco 2 (Human colonic carcinoma cell line) Whole Cell Lysate

Lane 2 : HEK293 (Human embryonic kidney cell line) Whole Cell Lysate

Lysates/proteins at 10 µg per lane.

Secondary

All lanes : Goat polyclonal to Rabbit IgG - H&L - Pre-Adsorbed (HRP) at 10 µg

Developed using the ECL technique.

Performed under reducing conditions.

Predicted band size: 136 kDa

Observed band size: 136 kDa

Additional bands at: 19 kDa, 60 kDa. We are unsure as to the identity of these extra bands.

Exposure time: 30 seconds

Please note: All products are "FOR RESEARCH USE ONLY. NOT FOR USE IN DIAGNOSTIC PROCEDURES"

Our Abpromise to you: Quality guaranteed and expert technical support

- Replacement or refund for products not performing as stated on the datasheet
- Valid for 12 months from date of delivery
- Response to your inquiry within 24 hours

- We provide support in Chinese, English, French, German, Japanese and Spanish
- Extensive multi-media technical resources to help you
- We investigate all quality concerns to ensure our products perform to the highest standards

If the product does not perform as described on this datasheet, we will offer a refund or replacement. For full details of the Abpromise, please visit <https://www.abcam.com/abpromise> or contact our technical team.

Terms and conditions

- Guarantee only valid for products bought direct from Abcam or one of our authorized distributors