



## Product datasheet

# Anti-SLCO1B3/OATP1B3 antibody ab222900

[1 References](#) [3 Images](#)

### Overview

<b>Product name</b>	Anti-SLCO1B3/OATP1B3 antibody
<b>Description</b>	Rabbit polyclonal to SLCO1B3/OATP1B3
<b>Host species</b>	Rabbit
<b>Tested applications</b>	<b>Suitable for:</b> IHC-P, ICC/IF
<b>Species reactivity</b>	<b>Reacts with:</b> Human
<b>Immunogen</b>	Recombinant fragment corresponding to Human SLCO1B3/OATP1B3 aa 600-700. Database link: <a href="#">Q9NPD5</a>
	 <a href="#">Run BLAST with</a>  <a href="#">Run BLAST with</a>
<b>Positive control</b>	IHC-P: Human liver and liver cancer tissue. ICC/IF: HepG2 cells.
<b>General notes</b>	<p>The Life Science industry has been in the grips of a reproducibility crisis for a number of years. Abcam is leading the way in addressing this with our range of recombinant monoclonal antibodies and knockout edited cell lines for gold-standard validation. Please check that this product meets your needs before purchasing.</p> <p>If you have any questions, special requirements or concerns, please send us an inquiry and/or contact our Support team ahead of purchase. Recommended alternatives for this product can be found below, along with publications, customer reviews and Q&amp;As</p>

### Properties

<b>Form</b>	Liquid
<b>Storage instructions</b>	Shipped at 4°C. Store at +4°C short term (1-2 weeks). Upon delivery aliquot. Store at -20°C long term. Avoid freeze / thaw cycle.
<b>Storage buffer</b>	pH: 7.40 Preservative: 0.03% Proclin 300 Constituents: 50% Glycerol (glycerin, glycerine), PBS
<b>Purity</b>	Protein G purified
<b>Purification notes</b>	Purity >95%
<b>Clonality</b>	Polyclonal
<b>Isotype</b>	IgG

## Applications

### The Abpromise guarantee

Our **Abpromise guarantee** covers the use of ab222900 in the following tested applications.

The application notes include recommended starting dilutions; optimal dilutions/concentrations should be determined by the end user.

Application	Abreviews	Notes
IHC-P		1/20 - 1/200.
ICC/IF		1/50 - 1/200.

## Target

### Function

Mediates the Na(+)-independent uptake of organic anions such as 17-beta-glucuronosyl estradiol, taurocholate, triiodothyronine (T3), leukotriene C4, dehydroepiandrosterone sulfate (DHEAS), methotrexate and sulfobromophthalein (BSP). Involved in the clearance of bile acids and organic anions from the liver.

### Tissue specificity

Highly expressed in liver, in particular at the basolateral membrane of hepatocytes near the central vein. Not detected in other tissues. Highly expressed in some cancer cell lines derived from colon, pancreas, liver and gall bladder.

### Involvement in disease

Hyperbilirubinemia, Rotor type

### Sequence similarities

Belongs to the organo anion transporter (TC 2.A.60) family.  
Contains 1 Kazal-like domain.

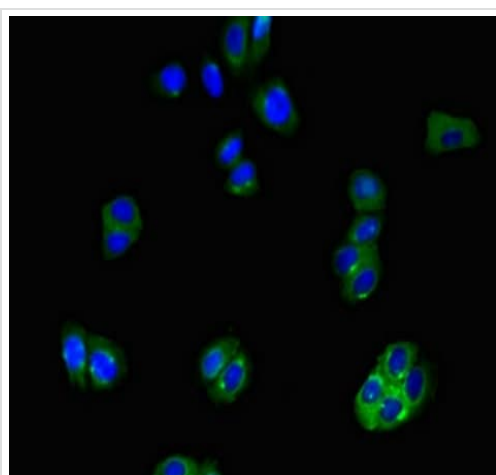
### Post-translational modifications

N-glycosylated.

### Cellular localization

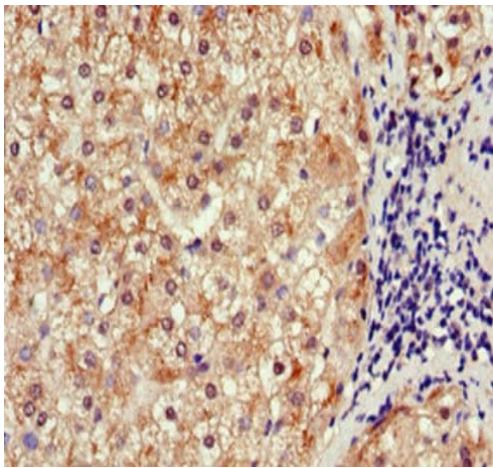
Basolateral cell membrane.

## Images



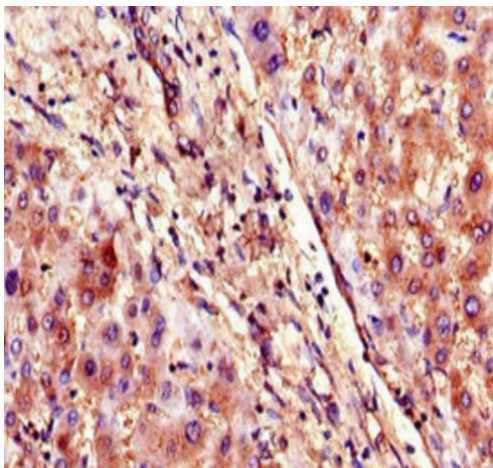
HepG2 (human liver hepatocellular carcinoma cell line) cells stained for SLCO1B3/OATP1B3 (green) using ab222900 (1/100 dilution) in ICC/IF. Secondary: Alexa Fluor 488<sup>®</sup>-conjugated Goat Anti-Rabbit IgG (H+L).

Immunocytochemistry/ Immunofluorescence - Anti-SLCO1B3/OATP1B3 antibody (ab222900)



Immunohistochemistry (Formalin/PFA-fixed paraffin-embedded sections) - Anti-SLCO1B3/OATP1B3 antibody (ab222900)

Paraffin embedded human liver cancer tissue stained for SLCO1B3/OATP1B3 with ab222900 (1/100 dilution) in immunohistochemical analysis.



Immunohistochemistry (Formalin/PFA-fixed paraffin-embedded sections) - Anti-SLCO1B3/OATP1B3 antibody (ab222900)

Paraffin embedded human liver tissue stained for SLCO1B3/OATP1B3 with ab222900 (1/100 dilution) in immunohistochemical analysis.

**Please note:** All products are "FOR RESEARCH USE ONLY. NOT FOR USE IN DIAGNOSTIC PROCEDURES"

### Our Abpromise to you: Quality guaranteed and expert technical support

- Replacement or refund for products not performing as stated on the datasheet
- Valid for 12 months from date of delivery
- Response to your inquiry within 24 hours
- We provide support in Chinese, English, French, German, Japanese and Spanish
- Extensive multi-media technical resources to help you
- We investigate all quality concerns to ensure our products perform to the highest standards

If the product does not perform as described on this datasheet, we will offer a refund or replacement. For full details of the Abpromise, please visit <https://www.abcam.com/abpromise> or contact our technical team.

#### **Terms and conditions**

---

- Guarantee only valid for products bought direct from Abcam or one of our authorized distributors