

# Anti-SLCO2B1/OATP2B1 antibody [EPR22212-37] ab245246

Recombinant RabMAb

2 Images

### Overview

Product name	Anti-SLCO2B1/OATP2B1 antibody [EPR22212-37]
Description	Rabbit monoclonal [EPR22212-37] to SLCO2B1/OATP2B1
Host species	Rabbit
Tested applications	<b>Suitable for:</b> WB <b>Unsuitable for:</b> Flow Cyt, ICC/IF, IHC-P or IP
Species reactivity	<b>Reacts with:</b> Human
Immunogen	Synthetic peptide. This information is proprietary to Abcam and/or its suppliers.
Positive control	WB: Human placenta and liver lysates.
General notes	This product is a recombinant monoclonal antibody, which offers several advantages including: <ul style="list-style-type: none"> <li>- High batch-to-batch consistency and reproducibility</li> <li>- Improved sensitivity and specificity</li> <li>- Long-term security of supply</li> <li>- Animal-free production</li> </ul> For more information <a href="#">see here</a> . Our RabMAb <sup>®</sup> technology is a patented hybridoma-based technology for making rabbit monoclonal antibodies. For details on our patents, please refer to <a href="#">RabMAb<sup>®</sup> patents</a> .

### Properties

Form	Liquid
Storage instructions	Shipped at 4°C. Store at +4°C short term (1-2 weeks). Upon delivery aliquot. Store at -20°C long term. Avoid freeze / thaw cycle.
Storage buffer	pH: 7.2 Preservative: 0.01% Sodium azide Constituents: PBS, 40% Glycerol (glycerin, glycerine), 0.05% BSA
Purity	Protein A purified
Clonality	Monoclonal
Clone number	EPR22212-37

Isotype

IgG

## Applications

### The Abpromise guarantee

Our **Abpromise guarantee** covers the use of ab245246 in the following tested applications.

The application notes include recommended starting dilutions; optimal dilutions/concentrations should be determined by the end user.

Application	Abreviews	Notes
WB		1/1000. Detects a band of approximately 85 kDa (predicted molecular weight: 77 kDa).

### Application notes

Is unsuitable for Flow Cyt, ICC/IF, IHC-P or IP.

## Target

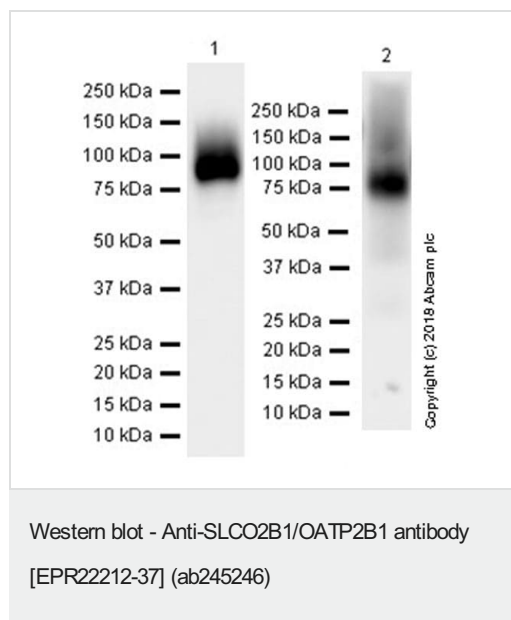
### Relevance

SLCO2B1 (solute carrier organic anion transporter family member 2B1), or Organic anion transporter B (OATP-B) mediates sodium-independent transport of organic anions. Unlike other related proteins, SLCO2B1 is expressed in many tissues, including liver, placenta, brain, heart and intestine. SLCO2B1 plays a role in the uptake of steroids and a number of drugs such as statins.

### Cellular localization

Cell Membrane

## Images



**All lanes :** Anti-SLCO2B1/OATP2B1 antibody [EPR22212-37] (ab245246) at 1/1000 dilution

**Lane 1 :** Human placenta tissue lysate

**Lane 2 :** Human liver tissue lysate

Lysates/proteins at 20 µg per lane.

### Secondary

**All lanes :** VeriBlot for IP Detection Reagent (HRP) (**ab131366**) at 1/1000 dilution

**Predicted band size:** 77 kDa

**Observed band size:** 85 kDa

**Exposure time :** Lane 1: 3 seconds; Lane 2: 37 seconds.

Blocking/Dilution buffer: 5% NFDM/TBST.

The expression profile/ molecular weight observed is consistent with what has been described in the literature (PMID:11159893; PMID:16357150; PMID:17020956).

Why choose a recombinant antibody?

 <p><b>Research with confidence</b> Consistent and reproducible results</p>	 <p><b>Long-term and scalable supply</b> Recombinant technology</p>
 <p><b>Success from the first experiment</b> Confirmed specificity</p>	 <p><b>Ethical standards compliant</b> Animal-free production</p>

Anti-SLCO2B1/OATP2B1 antibody [EPR22212-37]  
(ab245246)

**Please note:** All products are "FOR RESEARCH USE ONLY. NOT FOR USE IN DIAGNOSTIC PROCEDURES"

### Our Abpromise to you: Quality guaranteed and expert technical support

---

- Replacement or refund for products not performing as stated on the datasheet
- Valid for 12 months from date of delivery
- Response to your inquiry within 24 hours
- We provide support in Chinese, English, French, German, Japanese and Spanish
- Extensive multi-media technical resources to help you
- We investigate all quality concerns to ensure our products perform to the highest standards

If the product does not perform as described on this datasheet, we will offer a refund or replacement. For full details of the Abpromise, please visit <https://www.abcam.com/abpromise> or contact our technical team.

### Terms and conditions

---

- Guarantee only valid for products bought direct from Abcam or one of our authorized distributors