


Product datasheet

Anti-Slit2 antibody [EPR2771] ab134166

Recombinant RabMAb

[19 References](#) [3 Images](#)

Overview

Product name	Anti-Slit2 antibody [EPR2771]
Description	Rabbit monoclonal [EPR2771] to Slit2
Host species	Rabbit
Specificity	Slit2 is a secretory protein, so Brefeldin A (BFA) would help to increase the detection of Slit2 in cell lysate.
Tested applications	Suitable for: WB, IHC-P Unsuitable for: Flow Cyt or ICC/IF
Species reactivity	Reacts with: Human Predicted to work with: Mouse, Rat 
Immunogen	Synthetic peptide within Human Slit2 aa 1450-1550. The exact sequence is proprietary. Database link: O94813
Positive control	WB: HEK-293, Untreated PC-3 and treated with 300ng/ml Brefeldin A (BFA) for 24 hours whole cell lysates. IHC: Human fetal kidney tissue.
General notes	This product is a recombinant monoclonal antibody, which offers several advantages including: <ul style="list-style-type: none"> - High batch-to-batch consistency and reproducibility - Improved sensitivity and specificity - Long-term security of supply - Animal-free production For more information see here . Our RabMAb [®] technology is a patented hybridoma-based technology for making rabbit monoclonal antibodies. For details on our patents, please refer to RabMAb[®] patents .

Properties

Form	Liquid
Storage instructions	Shipped at 4°C. Upon delivery aliquot and store at -20°C. Avoid repeated freeze / thaw cycles.
Storage buffer	pH: 7.2 Preservative: 0.05% Sodium azide Constituents: 0.1% BSA, 40% Glycerol (glycerin, glycerine), 9.85% Tris glycine, 50% Tissue culture supernatant

Purity	Protein A purified
Clonality	Monoclonal
Clone number	EPR2771
Isotype	IgG

Applications

The Abpromise guarantee Our **Abpromise guarantee** covers the use of ab134166 in the following tested applications.

The application notes include recommended starting dilutions; optimal dilutions/concentrations should be determined by the end user.

Application	Abreviews	Notes
WB		1/1000 - 1/10000. Predicted molecular weight: 169 kDa.
IHC-P		1/100 - 1/250. Perform heat mediated antigen retrieval with citrate buffer pH 6 before commencing with IHC staining protocol.

Application notes Is unsuitable for Flow Cyt or ICC/IF.

Target

Function Thought to act as molecular guidance cue in cellular migration, and function appears to be mediated by interaction with roundabout homolog receptors. During neural development involved in axonal navigation at the ventral midline of the neural tube and projection of axons to different regions. SLIT1 and SLIT2 seem to be essential for midline guidance in the forebrain by acting as repulsive signal preventing inappropriate midline crossing by axons projecting from the olfactory bulb. In spinal chord development may play a role in guiding commissural axons once they reached the floor plate by modulating the response to netrin. In vitro, silences the attractive effect of NTN1 but not its growth-stimulatory effect and silencing requires the formation of a ROBO1-DCC complex. May be implicated in spinal chord midline post-crossing axon repulsion. In vitro, only commissural axons that crossed the midline responded to SLIT2. In the developing visual system appears to function as repellent for retinal ganglion axons by providing a repulsion that directs these axons along their appropriate paths prior to, and after passage through, the optic chiasm. In vitro, collapses and repels retinal ganglion cell growth cones. Seems to play a role in branching and arborization of CNS sensory axons, and in neuronal cell migration. In vitro, Slit homolog 2 protein N-product, but not Slit homolog 2 protein C-product, repels olfactory bulb (OB) but not dorsal root ganglia (DRG) axons, induces OB growth cones collapse and induces branching of DRG axons. Seems to be involved in regulating leukocyte migration.

Tissue specificity Fetal lung and kidney, and adult spinal cord. Weak expression in adult adrenal gland, thyroid, trachea and other tissues examined.

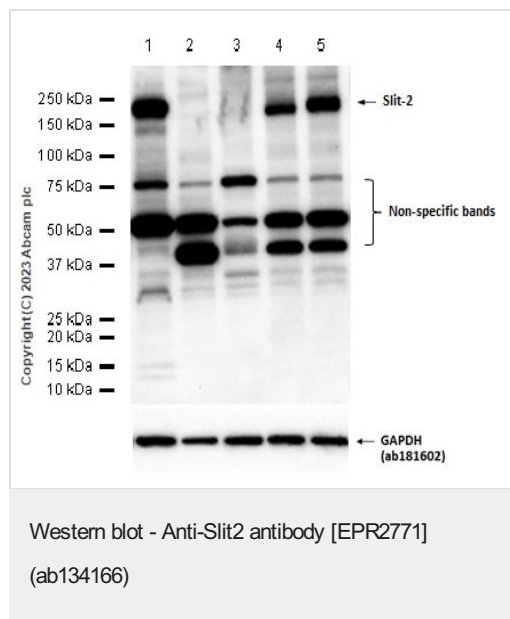
Sequence similarities Contains 1 CTCK (C-terminal cystine knot-like) domain.
Contains 7 EGF-like domains.
Contains 1 laminin G-like domain.
Contains 20 LRR (leucine-rich) repeats.
Contains 4 LRRCT domains.
Contains 4 LRRNT domains.

Domain The leucine-rich repeat domain is sufficient for guiding both axon projection and neuronal migration, in vitro.

Cellular localization

Secreted. The C-terminal cleavage protein is more diffusible than the larger N-terminal protein that is more tightly cell associated.

Images



All lanes : Anti-Slit2 antibody [EPR2771] (ab134166) at 1/1000 dilution

Lane 1 : HEK-293 (Human embryonic kidney epithelial cell) whole cell lysate

Lane 2 : T-47 (Human ductal breast epithelial tumor epithelial cell) whole cell lysate

Lane 3 : A549 (Human lung carcinoma epithelial cell) whole cell lysate

Lane 4 : Untreated PC-3 (Human prostate adenocarcinoma epithelial cell) whole cell lysate

Lane 5 : PC-3 (Human prostate adenocarcinoma epithelial cell) treated with 300ng/ml Brefeldin A (BFA) for 24 hours whole cell lysate

Lysates/proteins at 20 µg per lane.

Secondary

All lanes : Goat Anti-Rabbit IgG H&L (HRP) ([ab97051](#)) at 1/20000 dilution

Predicted band size: 169 kDa

Observed band size: 200 kDa

Exposure time: 40 seconds

Blocking buffer and concentration: 5% NFDM/TBST

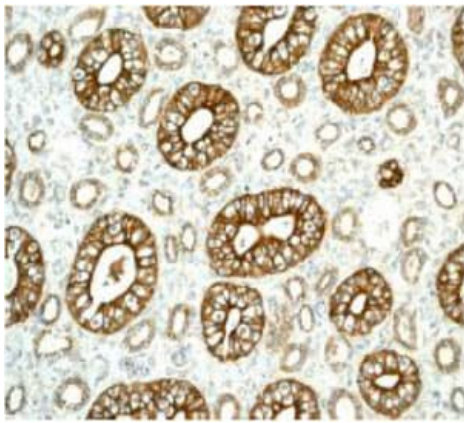
Diluting buffer and concentration: 5% NFDM/TBST

The expression level of Slit2 in T-47D and A549 are consistent with describes in PMID: 24287947 and PMID: 12384551.

Negative control: T-47D and A549 (PMID: 24287947 and PMID: 12384551).

Slit2 is a secretory protein, so Brefeldin A (BFA) would help to increase the detection of Slit2 in cell lysate.

ab181602 was used as a loading control.



Immunohistochemical analysis of paraffin embedded Human fetal kidney tissue labelled with ab134166 at 1/100 dilution.

Perform heat mediated antigen retrieval with citrate buffer pH 6 before commencing with IHC staining protocol.

Immunohistochemistry (Formalin/PFA-fixed paraffin-embedded sections) - Anti-Slit2 antibody [EPR2771] (ab134166)

Why choose a recombinant antibody?



Research with confidence
Consistent and reproducible results



Long-term and scalable supply
Recombinant technology



Success from the first experiment
Confirmed specificity



Ethical standards compliant
Animal-free production

Anti-Slit2 antibody [EPR2771] (ab134166)

Please note: All products are "FOR RESEARCH USE ONLY. NOT FOR USE IN DIAGNOSTIC PROCEDURES"

Our Abpromise to you: Quality guaranteed and expert technical support

- Replacement or refund for products not performing as stated on the datasheet
- Valid for 12 months from date of delivery
- Response to your inquiry within 24 hours
- We provide support in Chinese, English, French, German, Japanese and Spanish
- Extensive multi-media technical resources to help you
- We investigate all quality concerns to ensure our products perform to the highest standards

If the product does not perform as described on this datasheet, we will offer a refund or replacement. For full details of the Abpromise, please visit <https://www.abcam.com/abpromise> or contact our technical team.

Terms and conditions

- Guarantee only valid for products bought direct from Abcam or one of our authorized distributors