

Product datasheet

Anti-SLP-2 antibody [EP18708] ab191884

Recombinant RabMAb

[4 References](#) [9 Images](#)

Overview

Product name	Anti-SLP-2 antibody [EP18708]
Description	Rabbit monoclonal [EP18708] to SLP-2
Host species	Rabbit
Tested applications	Suitable for: Flow Cyt (Intra), WB, ICC/IF, IP
Species reactivity	Reacts with: Mouse, Rat, Human
Immunogen	Synthetic peptide. This information is proprietary to Abcam and/or its suppliers.
Positive control	WB: Human fetal brain, fetal heart and fetal kidney lysates; Human adenocarcinoma of lung lysate; Jurkat, MCF7, C6, RAW 264.7, PC-12 and NIH/3T3 whole cell lysates; Mouse brain, heart, kidney and spleen lysates; Rat brain, heart and spleen lysates. ICC/IF: Jurkat cells. IP: HeLa and Jurkat whole cell lysates. Flow Cyt (intra): Jurkat cell lysate
General notes	<p>This product is a recombinant monoclonal antibody, which offers several advantages including:</p> <ul style="list-style-type: none"> - High batch-to-batch consistency and reproducibility - Improved sensitivity and specificity - Long-term security of supply - Animal-free production <p>For more information see here.</p> <p>Our RabMAb[®] technology is a patented hybridoma-based technology for making rabbit monoclonal antibodies. For details on our patents, please refer to RabMAb[®] patents.</p>

Properties

Form	Liquid
Storage instructions	Shipped at 4°C. Store at +4°C short term (1-2 weeks). Upon delivery aliquot. Store at -20°C long term. Avoid freeze / thaw cycle.
Storage buffer	<p>pH: 7.2</p> <p>Preservative: 0.01% Sodium azide</p> <p>Constituents: 59% PBS, 40% Glycerol, 0.05% BSA</p>
Purity	Protein A purified
Clonality	Monoclonal
Clone number	EP18708

Isotype

IgG

Applications

The Abpromise guarantee

Our **Abpromise guarantee** covers the use of ab191884 in the following tested applications.

The application notes include recommended starting dilutions; optimal dilutions/concentrations should be determined by the end user.

Application	Abreviews	Notes
Flow Cyt (Intra)		1/900.
WB		1/2000. Detects a band of approximately 39 kDa (predicted molecular weight: 39 kDa).
ICC/IF		1/500.
IP		1/50.

Target

Tissue specificity

Ubiquitously expressed at low levels.

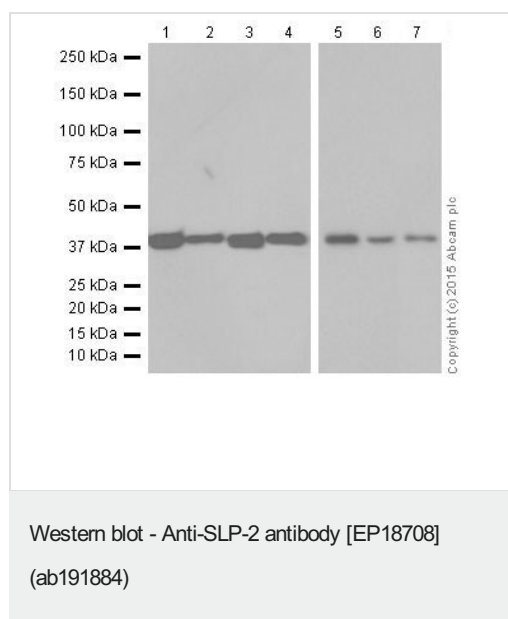
Sequence similarities

Belongs to the band 7/mec-2 family.

Cellular localization

Membrane. Cytoplasm. Cytoplasm > cytoskeleton. Associated with the cytoskeleton.

Images



All lanes : Anti-SLP-2 antibody [EP18708] (ab191884) at 1/2000 dilution

Lane 1 : Mouse brain lysate

Lane 2 : Mouse heart lysate

Lane 3 : Mouse kidney lysate

Lane 4 : Mouse spleen lysate

Lane 5 : Rat brain lysate

Lane 6 : Rat heart lysate

Lane 7 : Rat spleen lysate

Lysates/proteins at 10 µg per lane.

Secondary

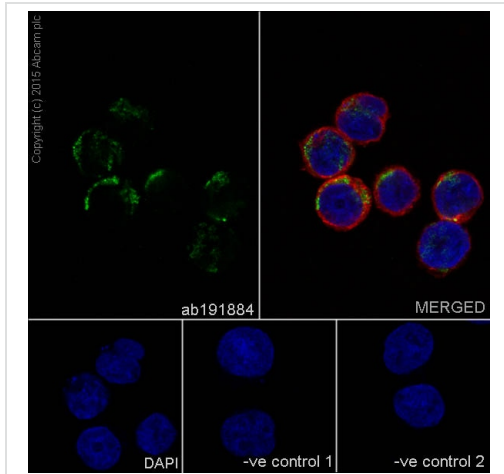
All lanes : Goat Anti-Rabbit IgG H&L (HRP) (**ab97051**) at 1/100000 dilution

Predicted band size: 39 kDa

Observed band size: 39 kDa

Blocking/Dilution buffer: 5% NFDM/TBST.

Exposure time Lanes 1-4: 15 seconds; Lanes 5-7: 5 seconds.



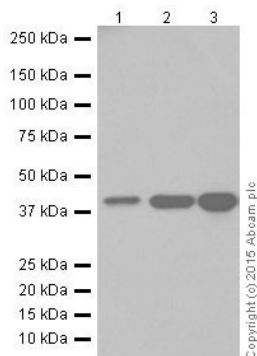
Immunocytochemistry/ Immunofluorescence - Anti-SLP-2 antibody [EP18708] (ab191884)

Immunofluorescent analysis of 4% paraformaldehyde-fixed, 0.1% Triton X-100 permeabilized Jurkat (Human T cell leukemia cells from peripheral blood) cells labeling SLP-2 with ab191884 at 1/500 dilution, followed by Goat anti-rabbit IgG (Alexa Fluor® 488) (**ab150077**) secondary antibody at 1/1000 dilution (green). Confocal image showing cytoplasm staining on Jurkat cell line. The nuclear counter stain is DAPI (blue). Tubulin is detected with **ab7291** (anti-Tubulin mouse mAb) at 1/1000 dilution and **ab150120** (AlexaFluor®594 Goat anti-Mouse secondary) at 1/1000 dilution (red).

The negative controls are as follows:

-ve control 1: ab191884 at 1/500 dilution followed by **ab150120** (AlexaFluor®594 Goat anti-Mouse secondary) at 1/1000 dilution.

-ve control 2: **ab7291** (anti-Tubulin mouse mAb) at 1/1000 dilution followed by **ab150077** (Alexa Fluor®488 Goat Anti-Rabbit IgG H&L) at 1/1000 dilution.



Western blot - Anti-SLP-2 antibody [EP18708] (ab191884)

All lanes : Anti-SLP-2 antibody [EP18708] (ab191884) at 1/2000 dilution

Lane 1 : Human fetal brain lysate

Lane 2 : Human fetal heart lysate

Lane 3 : Human fetal kidney lysate

Lysates/proteins at 10 µg per lane.

Secondary

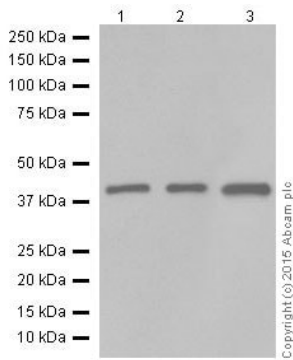
All lanes : Anti-Rabbit IgG (HRP), specific to the non-reduced form of IgG at 1/10000 dilution

Predicted band size: 39 kDa

Observed band size: 39 kDa

Exposure time: 15 seconds

Blocking/Dilution buffer: 5% NFDM/TBST.



Western blot - Anti-SLP-2 antibody [EP18708] (ab191884)

All lanes : Anti-SLP-2 antibody [EP18708] (ab191884) at 1/2000 dilution

Lane 1 : Human adenocarcinoma of lung tissue lysate

Lane 2 : Jurkat (Human T cell leukemia cells from peripheral blood) whole cell lysate

Lane 3 : MCF7 (Human breast adenocarcinoma cell line) whole cell lysate

Lysates/proteins at 10 µg per lane.

Secondary

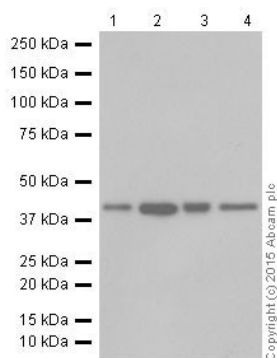
All lanes : Goat Anti-Rabbit IgG H&L (HRP) ([ab97051](#)) at 1/100000 dilution

Predicted band size: 39 kDa

Observed band size: 39 kDa

Exposure time: 15 seconds

Blocking/Dilution buffer: 5% NFDM/TBST.



Western blot - Anti-SLP-2 antibody [EP18708] (ab191884)

All lanes : Anti-SLP-2 antibody [EP18708] (ab191884) at 1/2000 dilution

Lane 1 : C6 (Rat glial tumor cells) whole cell lysate

Lane 2 : RAW 264.7 (Mouse macrophage cells transformed with Abelson murine leukemia virus) whole cell lysate

Lane 3 : PC-12 (Rat adrenal gland pheochromocytoma) whole cell lysate

Lane 4 : NIH/3T3 (Mouse embryo fibroblast cells) whole cell lysate

Lysates/proteins at 10 µg per lane.

Secondary

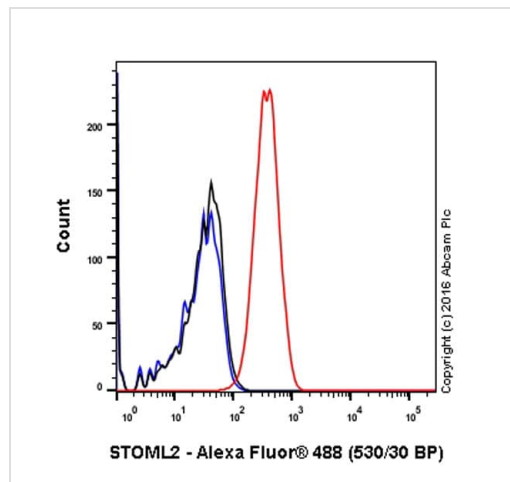
All lanes : Goat Anti-Rabbit IgG H&L (HRP) ([ab97051](#)) at 1/100000 dilution

Predicted band size: 39 kDa

Observed band size: 39 kDa

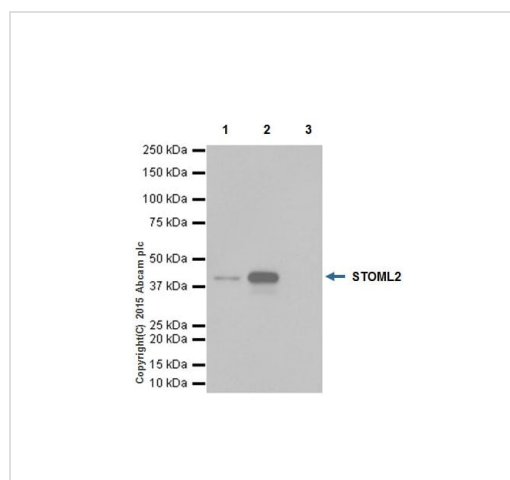
Exposure time: 3 seconds

Blocking/Dilution buffer: 5% NFDM/TBST.



Flow Cytometry (Intracellular) - Anti-SLP-2 antibody
[EP18708] (ab191884)

Intracellular Flow Cytometry analysis of Jurkat cells labelling SLP-2 (red) with purified ab191884 at dilution of 1/900. The secondary antibody used was Alexa Fluor® 488 goat-anti-rabbit IgG (1/2000). Cells were fixed with 4% paraformaldehyde and permeabilised with 90% methanol. Isotype control antibody used was Rabbit Monoclonal IgG (black). The blue line shows cells without incubation with primary antibody and secondary antibody.



Immunoprecipitation - Anti-SLP-2 antibody
[EP18708] (ab191884)

SLP-2 was immunoprecipitated from 1mg of HeLa (Human epithelial cells from cervix adenocarcinoma) whole cell lysate with ab191884 at 1/50 dilution. Western blot was performed from the immunoprecipitate using ab191884 at 1/1000 dilution. VeriBlot for IP Detection Reagent (HRP) ([ab131366](#)), was used for detection at 1/10000 dilution.

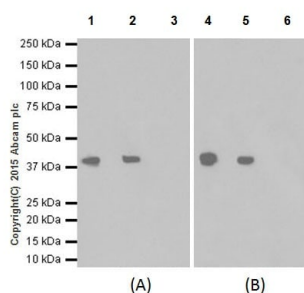
Lane 1: HeLa whole cell lysate, 10ug (Input).

Lane 2: ab191884 IP in HeLa whole cell lysate.

Lane 3: Rabbit monoclonal IgG ([ab172730](#)) instead of ab191884 in HeLa whole cell lysate.

Blocking and dilution buffer and concentration: 5% NFDM/TBST.

Exposure time: 1 second.



Immunoprecipitation - Anti-SLP-2 antibody
[EP18708] (ab191884)

SLP-2 was immunoprecipitated from 1mg of Jurkat (Human T cell leukemia cells from peripheral blood) whole cell lysate with ab191884 at 1/60 dilution. Western blot was performed from the immunoprecipitate using ab191884 at 1/1000 dilution (Panel A) or another commercial anti-SLP-2 antibody at 1/1000 dilution (Panel B). VeriBlot for IP Detection Reagent (HRP) ([ab131366](#)), was used for detection at 1/10000 dilution.

IP application of ab191884, panel (A), was further validated by performing cross IP with an anti-SLP-2 antibody from another supplier, panel (B).

Lane 1 and 4: Jurkat whole cell lysate 10ug (Input).

Lane 2 and 5: ab191884 IP in Jurkat whole cell lysate.

Lane 3 and 6: Rabbit monoclonal IgG ([ab172730](#)) instead of ab191884 in Jurkat whole cell lysate.

Blocking and dilution buffer and concentration: 5% NFDm/TBST.

Exposure time: 30 seconds (Panels A and B).

Why choose a
recombinant antibody?



**Research with
confidence**
Consistent and
reproducible results



**Long-term and
scalable supply**
Recombinant
technology



**Success from the
first experiment**
Confirmed
specificity



**Ethical standards
compliant**
Animal-free
production

Anti-SLP-2 antibody [EP18708] (ab191884)

Please note: All products are "FOR RESEARCH USE ONLY. NOT FOR USE IN DIAGNOSTIC PROCEDURES"

Our Abpromise to you: Quality guaranteed and expert technical support

-
- Replacement or refund for products not performing as stated on the datasheet
 - Valid for 12 months from date of delivery
 - Response to your inquiry within 24 hours

 - We provide support in Chinese, English, French, German, Japanese and Spanish
 - Extensive multi-media technical resources to help you
 - We investigate all quality concerns to ensure our products perform to the highest standards

If the product does not perform as described on this datasheet, we will offer a refund or replacement. For full details of the Abpromise, please visit <https://www.abcam.com/abpromise> or contact our technical team.

Terms and conditions

- Guarantee only valid for products bought direct from Abcam or one of our authorized distributors