

## Product datasheet

### Anti-SLUG antibody [EPR25113-46] ab302780

Recombinant RabMAb

[1 References](#) [3 Images](#)

#### Overview

<b>Product name</b>	Anti-SLUG antibody [EPR25113-46]
<b>Description</b>	Rabbit monoclonal [EPR25113-46] to SLUG
<b>Host species</b>	Rabbit
<b>Tested applications</b>	<b>Suitable for:</b> WB <b>Unsuitable for:</b> Flow Cyt (Intra), IHC-P or IP
<b>Species reactivity</b>	<b>Reacts with:</b> Human <b>Does not react with:</b> Mouse, Rat
<b>Immunogen</b>	Synthetic peptide. This information is proprietary to Abcam and/or its suppliers.
<b>Positive control</b>	WB: A-204 whole cell lysate. His-tagged human SLUG recombinant protein.
<b>General notes</b>	AB302780 does not react in Western blot in mouse and rat samples.  This product is a recombinant monoclonal antibody, which offers several advantages including: <ul style="list-style-type: none"> <li>- High batch-to-batch consistency and reproducibility</li> <li>- Improved sensitivity and specificity</li> <li>- Long-term security of supply</li> <li>- Animal-free production</li> </ul> For more information <a href="#">see here</a> .  Our RabMAb <sup>®</sup> technology is a patented hybridoma-based technology for making rabbit monoclonal antibodies. For details on our patents, please refer to <a href="#">RabMAb<sup>®</sup> patents</a> .

#### Properties

<b>Form</b>	Liquid
<b>Storage instructions</b>	Shipped at 4°C. Store at +4°C short term (1-2 weeks). Upon delivery aliquot. Store at -20°C long term. Avoid freeze / thaw cycle.
<b>Storage buffer</b>	pH: 7.2 Preservative: 0.01% Sodium azide Constituents: 59% PBS, 40% Glycerol (glycerin, glycerine), 0.05% BSA
<b>Purity</b>	Protein A purified
<b>Clonality</b>	Monoclonal

Isotype IgG

**The Abpromise guarantee** Our **Abpromise guarantee** covers the use of ab302780 in the following tested applications. The application notes include recommended starting dilutions; optimal dilutions/concentrations should be determined by the end user.

Application	Abreviews	Notes
WB		1/1000. Detects a band of approximately 30 kDa (predicted molecular weight: 29 kDa).

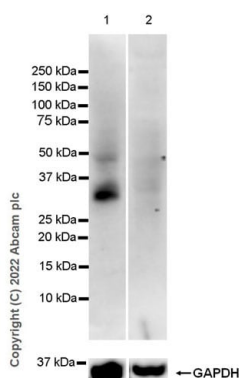
## Target

<b>Tissue specificity</b>	Expressed in placenta and adult heart, pancreas, liver, kidney and skeletal muscle.
---------------------------	---

<b>Sequence similarities</b>	Belongs to the snail C2H2-type zinc-finger protein family. Contains 5 C2H2-type zinc fingers.
------------------------------	--

<b>Cellular localization</b>	Nucleus.
------------------------------	----------

## Images



**All lanes :** Anti-SLUG antibody [EPR25113-46] (ab302780) at 1/1000 dilution

**Lane 1** : A-204 (Human muscle rhabdomyosarcoma), whole cell lysate

**Lane 2 :** MCF7 (human breast adenocarcinoma epithelial cell), whole cell lysate

Lysates/proteins at 40  $\mu$ g per lane.

## Secondary

**All lanes :** Goat Anti-Rabbit IgG H&L (HRP) (**ab97051**) at 1/20000 dilution

**Predicted band size: 29 kDa**

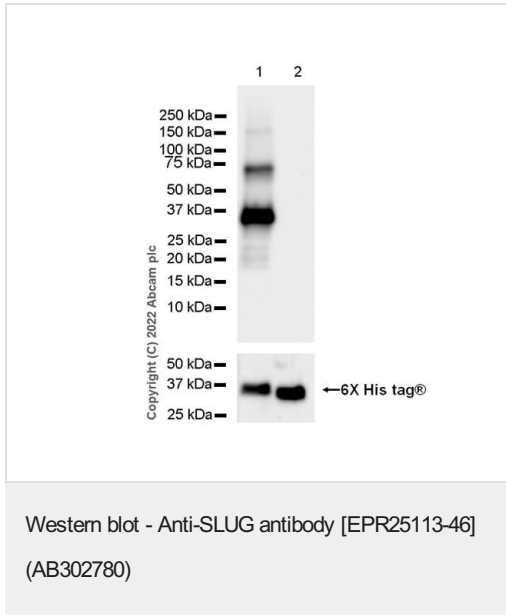
**Observed band size:** 30 kDa

**Exposure time:** 48 seconds

Blocking and dilution buffer: 5% NFDM/TBST.

**Negative control:** MCF7 (PMID:19756381).

This blot was developed using a high sensitivity ECL substrate.



**All lanes :** Anti-SLUG antibody [EPR25113-46] (ab302780) at 1/1000 dilution

**Lane 1 :** His-tagged human SLUG recombinant protein, 10 ng

**Lane 2 :** His-tagged human SNAI1 recombinant protein, 10 ng

#### Secondary

**All lanes :** Goat Anti-Rabbit IgG H&L (HRP) (**ab97051**) at 1/100000 dilution

**Predicted band size:** 29 kDa

**Observed band size:** 30 kDa

**Exposure time:** 3 minutes

Blocking and dilution buffer: 5% NFDM/TBST.

This antibody does not cross-react with human SNAI1.

Both recombinant proteins were made in-house and expressed from the *E. coli* expression systems.

### Why choose a recombinant antibody?



**Research with confidence**  
Consistent and reproducible results



**Long-term and scalable supply**  
Recombinant technology



**Success from the first experiment**  
Confirmed specificity



**Ethical standards compliant**  
Animal-free production

Anti-SLUG antibody [EPR25113-46] (AB302780)

**Please note:** All products are "FOR RESEARCH USE ONLY. NOT FOR USE IN DIAGNOSTIC PROCEDURES"

### Our Abpromise to you: Quality guaranteed and expert technical support

---

- Replacement or refund for products not performing as stated on the datasheet
- Valid for 12 months from date of delivery
- Response to your inquiry within 24 hours
- We provide support in Chinese, English, French, German, Japanese and Spanish
- Extensive multi-media technical resources to help you
- We investigate all quality concerns to ensure our products perform to the highest standards

If the product does not perform as described on this datasheet, we will offer a refund or replacement. For full details of the Abpromise, please visit <https://www.abcam.com/abpromise> or contact our technical team.

### Terms and conditions

---

- Guarantee only valid for products bought direct from Abcam or one of our authorized distributors