

Product datasheet

Anti-SMCHD1 antibody ab176731

[1 References](#) [4 Images](#)

Overview

Product name	Anti-SMCHD1 antibody
Description	Rabbit polyclonal to SMCHD1
Host species	Rabbit
Tested applications	Suitable for: WB, IP, IHC-P
Species reactivity	Reacts with: Human Predicted to work with: Rabbit, Chimpanzee, Cynomolgus monkey, Rhesus monkey, Gorilla



Immunogen	Synthetic peptide within Human SMCHD1 aa 1955-2005. The exact sequence is proprietary. (NP_056110.2). Sequence: IEEKLGMTPIRKCNDSLRHSPKVETTDPCVPPKMRREAT RQNRITKTD V
------------------	--

Database link: [A6NHR9](#)

 [Run BLAST with](#)

 [Run BLAST with](#)

Positive control	HeLa and 293T cell lysates; Human non-small cell lung cancer and testicular seminoma tissues.
-------------------------	---

General notes	The Life Science industry has been in the grips of a reproducibility crisis for a number of years. Abcam is leading the way in addressing this with our range of recombinant monoclonal antibodies and knockout edited cell lines for gold-standard validation. Please check that this product meets your needs before purchasing.
----------------------	--

If you have any questions, special requirements or concerns, please send us an inquiry and/or contact our Support team ahead of purchase. Recommended alternatives for this product can be found below, along with publications, customer reviews and Q&As

Properties

Form	Liquid
Storage instructions	Shipped at 4°C. Store at +4°C short term (1-2 weeks). Upon delivery aliquot. Store at -20°C long term. Avoid freeze / thaw cycle.
Storage buffer	pH: 6.8 Preservative: 0.09% Sodium azide

	Constituents: 0.1% BSA, 99% Tris buffered saline
Purity	Immunogen affinity purified
Purification notes	ab176731 is affinity purified using an epitope specific to SMCHD1 immobilized on solid support.
Clonality	Polyclonal
Isotype	IgG

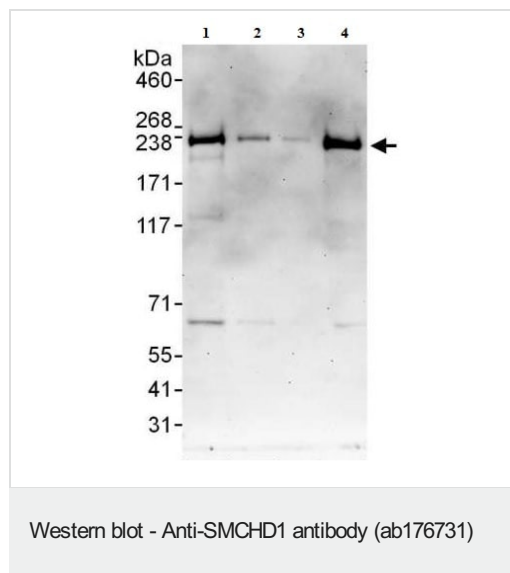
Applications

The Abpromise guarantee Our **Abpromise guarantee** covers the use of ab176731 in the following tested applications. The application notes include recommended starting dilutions; optimal dilutions/concentrations should be determined by the end user.

Application	Abreviews	Notes
WB		1/2000 - 1/10000. Predicted molecular weight: 226 kDa.
IP		Use at 2-5 µg/mg of lysate.
IHC-P		1/100 - 1/500. Perform heat mediated antigen retrieval with citrate buffer pH 6 before commencing with IHC staining protocol.

Target

Images



All lanes : Anti-SMCHD1 antibody (ab176731) at 0.04 µg/ml

Lane 1 : HeLa whole cell lysate at 50 µg

Lane 2 : HeLa whole cell lysate at 15 µg

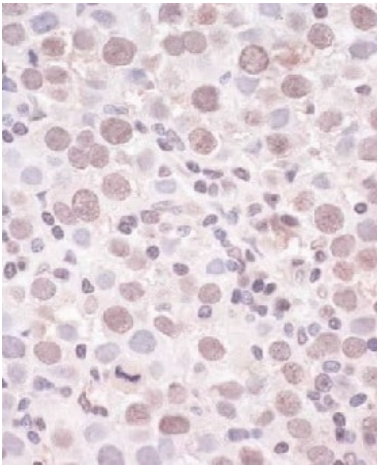
Lane 3 : HeLa whole cell lysate at 5 µg

Lane 4 : 293T whole cell lysate at 50 µg

Developed using the ECL technique.

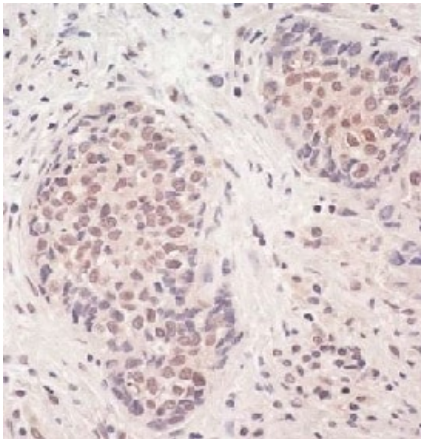
Predicted band size: 226 kDa

Exposure time: 3 minutes



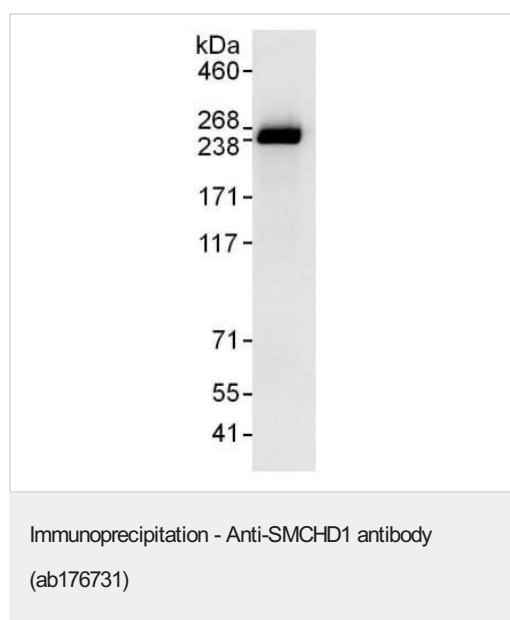
Immunohistochemical analysis of formalin-fixed, paraffin-embedded Human testicular seminoma tissue labeling SMCHD1 with ab176731 at 1/200 dilution (1 µg/ml). Detection: Peroxidase substrate.

Immunohistochemistry (Formalin/PFA-fixed paraffin-embedded sections) - Anti-SMCHD1 antibody (ab176731)



Immunohistochemical analysis of formalin-fixed, paraffin-embedded Human non-small cell lung cancer tissue labeling SMCHD1 with ab176731 at 1/200 dilution (1 µg/ml). Detection: Peroxidase substrate.

Immunohistochemistry (Formalin/PFA-fixed paraffin-embedded sections) - Anti-SMCHD1 antibody (ab176731)



Detection of SMCHD1 in Immunoprecipitates of HeLa whole cell lysate (1 mg for IP, 20% of IP loaded), using ab176731 at 3 µg/mg lysate for IP and at 0.4 µg/ml for subsequent Western blot detection.

Detection: Chemiluminescence with exposure time of 3 seconds.

Please note: All products are "FOR RESEARCH USE ONLY. NOT FOR USE IN DIAGNOSTIC PROCEDURES"

Our Abpromise to you: Quality guaranteed and expert technical support

- Replacement or refund for products not performing as stated on the datasheet
- Valid for 12 months from date of delivery
- Response to your inquiry within 24 hours
- We provide support in Chinese, English, French, German, Japanese and Spanish
- Extensive multi-media technical resources to help you
- We investigate all quality concerns to ensure our products perform to the highest standards

If the product does not perform as described on this datasheet, we will offer a refund or replacement. For full details of the Abpromise, please visit <https://www.abcam.com/abpromise> or contact our technical team.

Terms and conditions

- Guarantee only valid for products bought direct from Abcam or one of our authorized distributors