




## Product datasheet

# Anti-SMCHD1 antibody [CL4265] ab220026

6 Images

### Overview

<b>Product name</b>	Anti-SMCHD1 antibody [CL4265]
<b>Description</b>	Mouse monoclonal [CL4265] to SMCHD1
<b>Host species</b>	Mouse
<b>Tested applications</b>	<b>Suitable for:</b> IHC-P, ICC/IF
<b>Species reactivity</b>	<b>Reacts with:</b> Human <b>Predicted to work with:</b> Mouse, Rat 
<b>Immunogen</b>	Recombinant fragment corresponding to Human SMCHD1 aa 150-300. Database link: <a href="#">A6NHR9</a>  <a href="#">Run BLAST with</a>  <a href="#">Run BLAST with</a>
<b>Positive control</b>	Human fallopian tube, endometrium, breast cancer and stomach tissues. ICC/IF: A431 and U2-OS cells.
<b>General notes</b>	<p>The Life Science industry has been in the grips of a reproducibility crisis for a number of years. Abcam is leading the way in addressing this with our range of recombinant monoclonal antibodies and knockout edited cell lines for gold-standard validation. Please check that this product meets your needs before purchasing.</p> <p>If you have any questions, special requirements or concerns, please send us an inquiry and/or contact our Support team ahead of purchase. Recommended alternatives for this product can be found below, along with publications, customer reviews and Q&amp;As</p>

### Properties

<b>Form</b>	Liquid
<b>Storage instructions</b>	Shipped at 4°C. Store at +4°C short term (1-2 weeks). Upon delivery aliquot. Store at -20°C long term. Avoid freeze / thaw cycle.
<b>Storage buffer</b>	pH: 7.20 Preservative: 0.02% Sodium azide Constituents: 59% PBS, 40% Glycerol (glycerin, glycerine)
<b>Purity</b>	Protein A purified
<b>Clonality</b>	Monoclonal
<b>Clone number</b>	CL4265
<b>Isotype</b>	IgG1

## Applications

### The Abpromise guarantee

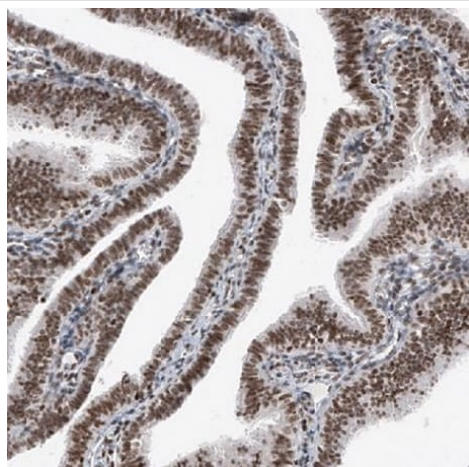
Our [Abpromise guarantee](#) covers the use of ab220026 in the following tested applications.

The application notes include recommended starting dilutions; optimal dilutions/concentrations should be determined by the end user.

Application	Abreviews	Notes
IHC-P		1/500 - 1/1000. Perform heat mediated antigen retrieval with citrate buffer pH 6 before commencing with IHC staining protocol.
ICC/IF		Use a concentration of 2 - 10 µg/ml.

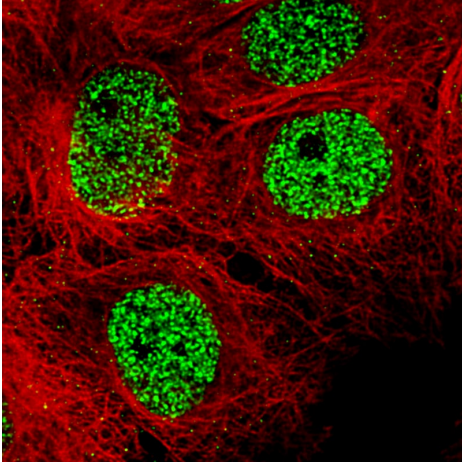
## Target

## Images



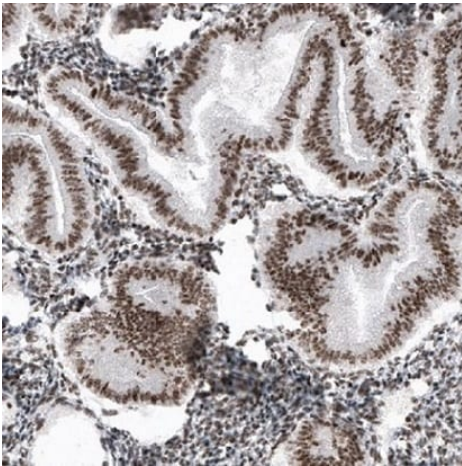
Immunohistochemical analysis of paraffin-embedded human fallopian tube tissue labeling SMCHD1 with ab220026 at 1/500 dilution.

Immunohistochemistry (Formalin/PFA-fixed paraffin-embedded sections) - Anti-SMCHD1 antibody [CL4265] (ab220026)



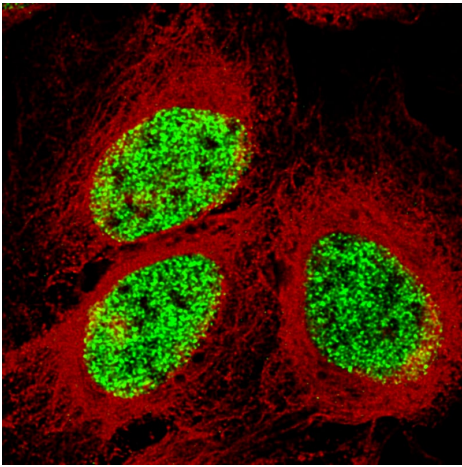
Immunocytochemistry/ Immunofluorescence - Anti-SMCHD1 antibody [CL4265] (ab220026)

Immunocytochemistry/ Immunofluorescence analysis of A431 cells labeling SMCHD1 with ab220026 at 2-10  $\mu\text{g/mL}$ . Cells were fixed with PFA and permeabilised with Triton X-100. The data is showing specific staining in the nucleoplasm in green. Microtubule- and nuclear probes are visualized in red and blue, respectively (where available).



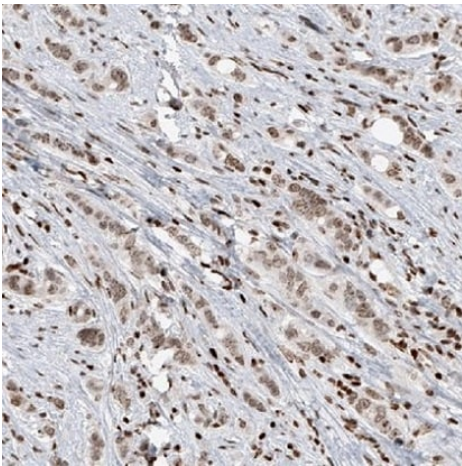
Immunohistochemistry (Formalin/PFA-fixed paraffin-embedded sections) - Anti-SMCHD1 antibody [CL4265] (ab220026)

Immunohistochemical analysis of paraffin-embedded human endometrium tissue labeling SMCHD1 with ab220026 at 1/500 dilution.



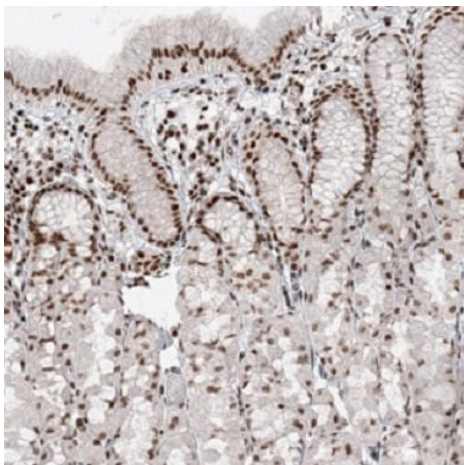
Immunocytochemistry/ Immunofluorescence - Anti-SMCHD1 antibody [CL4265] (ab220026)

Immunocytochemistry/ Immunofluorescence analysis of U2-OS cells labeling SMCHD1 with ab220026 at 2-10  $\mu\text{g/mL}$ . Cells were fixed with PFA and permeabilised with Triton X-100. The data is showing specific staining in the nucleoplasm in green. Microtubule- and nuclear probes are visualized in red and blue, respectively (where available).



Immunohistochemistry (Formalin/PFA-fixed paraffin-embedded sections) - Anti-SMCHD1 antibody [CL4265] (ab220026)

Immunohistochemical analysis of paraffin-embedded human breast cancer tissue labeling SMCHD1 with ab220026 at 1/500 dilution.



Immunohistochemical analysis of paraffin-embedded human stomach tissue labeling SMCHD1 with ab220026 at 1/500 dilution.

Immunohistochemistry (Formalin/PFA-fixed paraffin-embedded sections) - Anti-SMCHD1 antibody  
[CL4265] (ab220026)

**Please note:** All products are "FOR RESEARCH USE ONLY. NOT FOR USE IN DIAGNOSTIC PROCEDURES"

### Our Abpromise to you: Quality guaranteed and expert technical support

---

- Replacement or refund for products not performing as stated on the datasheet
- Valid for 12 months from date of delivery
- Response to your inquiry within 24 hours
- We provide support in Chinese, English, French, German, Japanese and Spanish
- Extensive multi-media technical resources to help you
- We investigate all quality concerns to ensure our products perform to the highest standards

If the product does not perform as described on this datasheet, we will offer a refund or replacement. For full details of the Abpromise, please visit <https://www.abcam.com/abpromise> or contact our technical team.

### Terms and conditions

---

- Guarantee only valid for products bought direct from Abcam or one of our authorized distributors