

Product datasheet

Anti-Smoothelin antibody [R4A] ab8969

★★★★★ [5 Abreviews](#) [27 References](#) [10 Images](#)

Overview

Product name	Anti-Smoothelin antibody [R4A]
Description	Mouse monoclonal [R4A] to Smoothelin
Host species	Mouse
Specificity	Reacts with the 59 kDa and 100 kDa protein, corresponding to smoothelin A and B, respectively, which are exclusively found in smooth muscle cells.
Tested applications	Suitable for: ICC/IF, IHC-Fr, IHC-P, WB
Species reactivity	Reacts with: Chicken, Cat, Dog, Human, Pig, Monkey Does not react with: Mouse, Rat, Hamster
Immunogen	Recombinant full length protein corresponding to Smoothelin. Derived by fusion of SP2/0-Ag14 mouse myeloma cells with spleen cells from a BALB/c mouse immunized with a cytoskeletal extract of chicken gizzard. Database link: P53814
General notes	<p>The Life Science industry has been in the grips of a reproducibility crisis for a number of years. Abcam is leading the way in addressing this with our range of recombinant monoclonal antibodies and knockout edited cell lines for gold-standard validation. Please check that this product meets your needs before purchasing.</p> <p>If you have any questions, special requirements or concerns, please send us an inquiry and/or contact our Support team ahead of purchase. Recommended alternatives for this product can be found below, along with publications, customer reviews and Q&As</p>

Properties

Form	Liquid
Storage instructions	Shipped at 4°C. Store at +4°C short term (1-2 weeks). Upon delivery aliquot. Store at -20°C or -80°C. Avoid freeze / thaw cycle.
Storage buffer	Preservative: 0.09% Sodium azide Constituent: PBS
Purity	Protein G purified
Clonality	Monoclonal
Clone number	R4A
Myeloma	Sp2/0-Ag14

Isotype

IgG1

Applications

The Abpromise guarantee

Our **Abpromise guarantee** covers the use of ab8969 in the following tested applications.

The application notes include recommended starting dilutions; optimal dilutions/concentrations should be determined by the end user.

Application	Abreviews	Notes
ICC/IF	★★★★★ (1)	Use at an assay dependent concentration.
IHC-Fr		Use at an assay dependent concentration.
IHC-P	★★★★★ (3)	Use at an assay dependent concentration.
WB	★★★★★ (1)	1/100 - 1/1000.

Target

Function

Structural protein of the cytoskeleton.

Tissue specificity

Smooth muscle; contractile or vascular (for the long form).

Sequence similarities

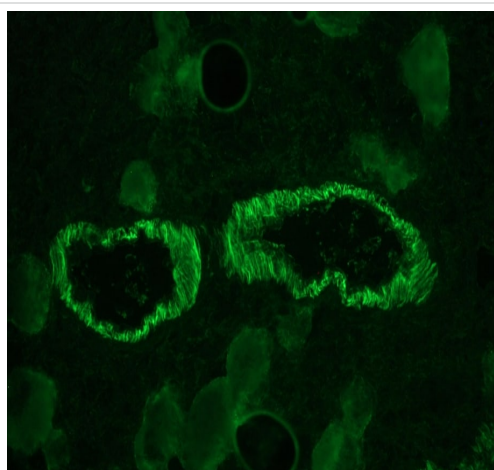
Belongs to the smoothelin family.

Contains 1 CH (calponin-homology) domain.

Cellular localization

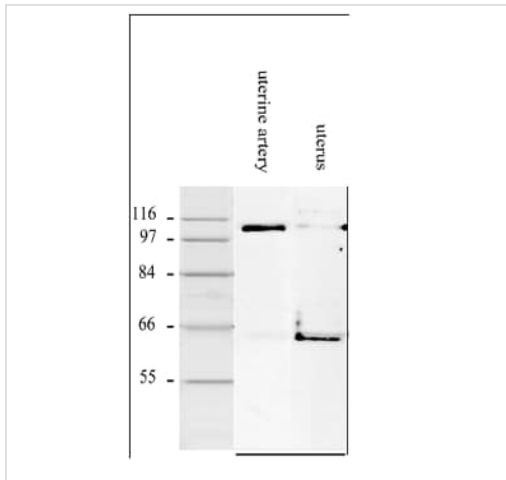
Cytoplasm > cytoskeleton. Exhibits a filamentous organization.

Images



Smooth muscle cells in swine colon as detected by ab8969 (dilution 1:100).

Immunohistochemistry (Frozen sections) - Anti-Smoothelin antibody [R4A] (ab8969)

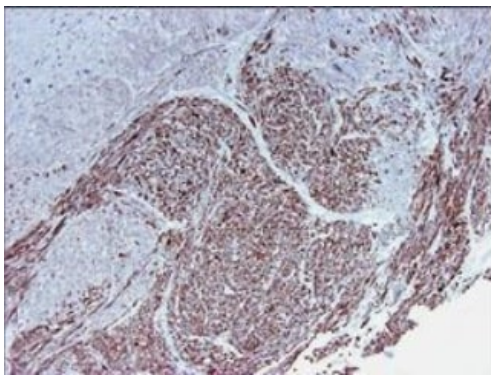


Western blot - Anti-Smoothelin antibody [R4A]
(ab8969)

All lanes : Anti-Smoothelin antibody [R4A] (ab8969)

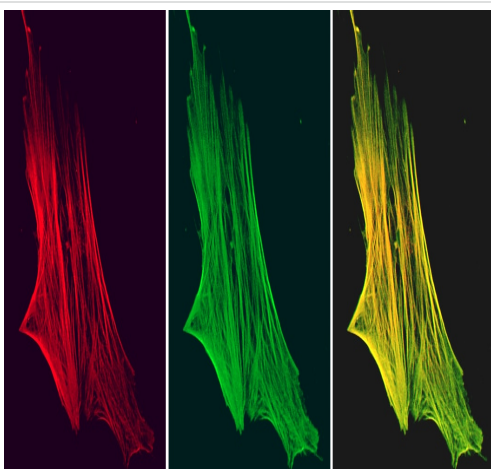
Lane 1 : Human uterine artery

Lane 2 : Human uterine corpus.



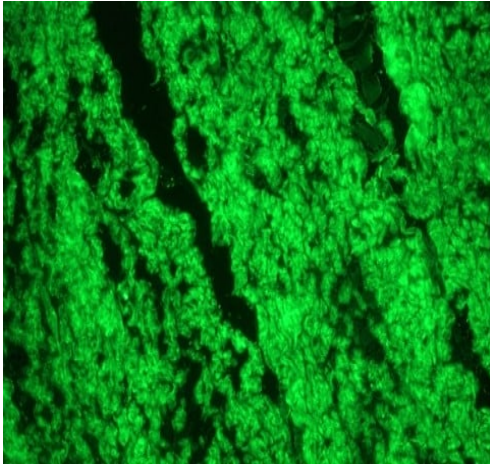
Immunohistochemistry (Formalin/PFA-fixed paraffin-
embedded sections) - Anti-Smoothelin antibody
[R4A] (ab8969)

Immunohistochemical analysis on paraffin section of human smooth
muscle labeling Smoothelin with ab8969.



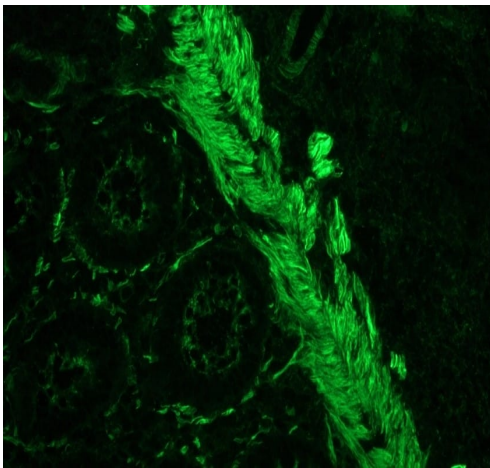
Immunocytochemistry/ Immunofluorescence - Anti-
Smoothelin antibody [R4A] (ab8969)

Indirect immunofluorescence staining of a cultured human fibroblast,
showing colocalization of smoothelin (red fluorescence; as detected
by ab8969) and actin (green fluorescence).



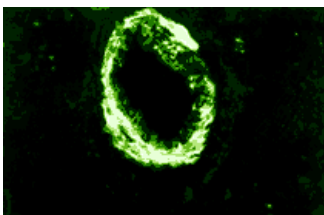
Immunohistochemistry (Frozen sections) - Anti-Smoothelin antibody [R4A] (ab8969)

Smooth muscle cells in swine colon as detected by ab8969 (dilution 1:100).



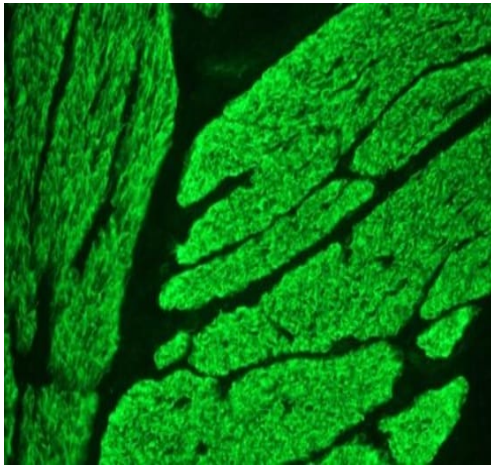
Immunohistochemistry (Frozen sections) - Anti-Smoothelin antibody [R4A] (ab8969)

Smooth muscle cells in swine colon as detected by ab8969 (dilution 1:100).



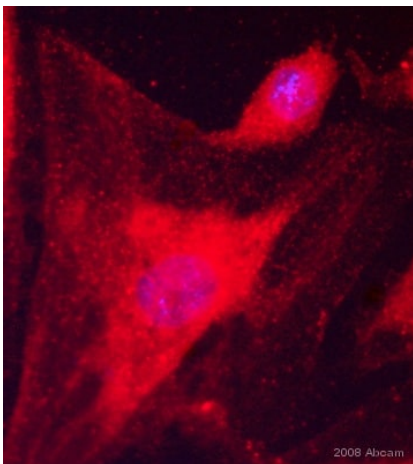
Immunocytochemistry/ Immunofluorescence - Anti-Smoothelin antibody [R4A] (ab8969)

Human blood vessel in cardiac muscle stained with the monoclonal smoothelin antibody ab8969.



Immunohistochemistry (Frozen sections) - Anti-Smoothelin antibody [R4A] (ab8969)

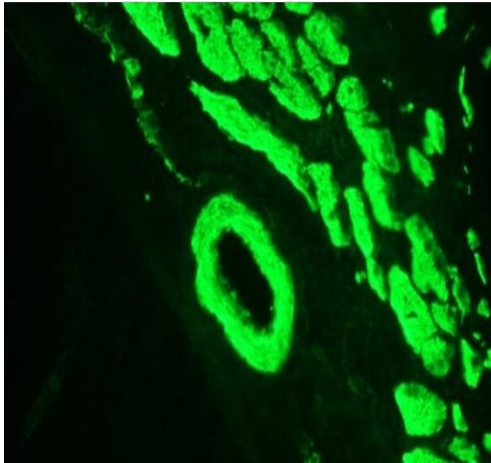
Immunohistochemical analysis on frozen section of chicken gizzard striated muscle labeling Smoothelin with ab8969.



Immunocytochemistry/ Immunofluorescence - Anti-Smoothelin antibody [R4A] (ab8969)

This image is courtesy of an anonymous Abreview

ab8969 staining cells from a human vascular smooth muscle cells by ICC/IF. Cells were PFA fixed and permeabilized in 0.5% Triton X-100 prior to blocking in 10% serum for 10 minutes at 21°C. The primary antibody was diluted 1/100 and incubated with the sample for 1 hour at 21°C. An Rhodamine conjugated donkey anti-mouse antibody, diluted 1/200, was used as the secondary.



Immunohistochemistry on frozen section of chicken gizzard striated muscle labeling Smoothelin with ab8969.

Immunohistochemistry (Frozen sections) - Anti-Smoothelin antibody [R4A] (ab8969)

Please note: All products are "FOR RESEARCH USE ONLY. NOT FOR USE IN DIAGNOSTIC PROCEDURES"

Our Abpromise to you: Quality guaranteed and expert technical support

- Replacement or refund for products not performing as stated on the datasheet
- Valid for 12 months from date of delivery
- Response to your inquiry within 24 hours
- We provide support in Chinese, English, French, German, Japanese and Spanish
- Extensive multi-media technical resources to help you
- We investigate all quality concerns to ensure our products perform to the highest standards

If the product does not perform as described on this datasheet, we will offer a refund or replacement. For full details of the Abpromise, please visit <https://www.abcam.com/abpromise> or contact our technical team.

Terms and conditions

- Guarantee only valid for products bought direct from Abcam or one of our authorized distributors