




Product datasheet

Anti-SNAIL + SLUG antibody [CL3700] - N-terminal ab224731

[2 References](#) [8 Images](#)

Overview

Product name	Anti-SNAIL + SLUG antibody [CL3700] - N-terminal
Description	Mouse monoclonal [CL3700] to SNAIL + SLUG - N-terminal
Host species	Mouse
Tested applications	Suitable for: IHC-P, ICC/IF
Species reactivity	Reacts with: Human Predicted to work with: Mouse 
Immunogen	Recombinant fragment aa 1-100 (N terminal). Corresponding to Human SNAIL. Database link: O95863 <div>  Run BLAST with  Run BLAST with </div>
Positive control	IHC-P: Human colorectal cancer, breast cancer, fallopian tube, colon, testis, cortex and prostate tissues. ICC/IF: BeWo cells.
General notes	<p>The Life Science industry has been in the grips of a reproducibility crisis for a number of years. Abcam is leading the way in addressing this with our range of recombinant monoclonal antibodies and knockout edited cell lines for gold-standard validation. Please check that this product meets your needs before purchasing.</p> <p>If you have any questions, special requirements or concerns, please send us an inquiry and/or contact our Support team ahead of purchase. Recommended alternatives for this product can be found below, along with publications, customer reviews and Q&As</p>

Properties

Form	Liquid
Storage instructions	Shipped at 4°C. Store at +4°C short term (1-2 weeks). Upon delivery aliquot. Store at -20°C long term. Avoid freeze / thaw cycle.
Storage buffer	pH: 7.20 Preservative: 0.02% Sodium azide Constituents: 40% Glycerol (glycerin, glycerine), PBS
Purity	Protein A purified
Purification notes	Purified from TCS.

Clonality	Monoclonal
Clone number	CL3700
Isotype	IgG1

Applications

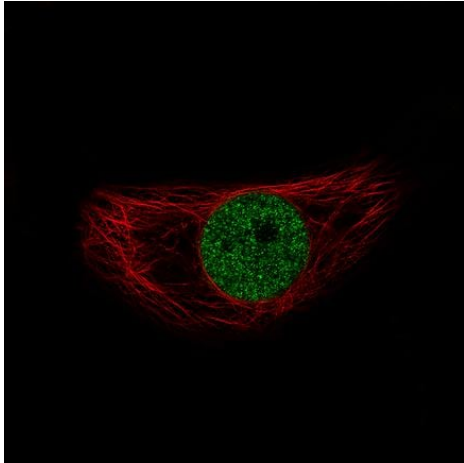
The Abpromise guarantee Our **Abpromise guarantee** covers the use of ab224731 in the following tested applications. The application notes include recommended starting dilutions; optimal dilutions/concentrations should be determined by the end user.

Application	Abreviews	Notes
IHC-P		1/5000 - 1/10000. Perform heat mediated antigen retrieval with citrate buffer pH 6 before commencing with IHC staining protocol.
ICC/IF		Use a concentration of 2 - 10 µg/ml. Fixation/Permeabilization: PFA/Triton X-100

Target

Relevance	Function: SNAIL is involved in the epithelial to mesenchymal transition (EMT) and formation and maintenance of embryonic mesoderm (By similarity). Binds to 3 E-boxes of the E-cadherin gene promoter and represses its transcription. SLUG is a transcriptional repressor, involved in the generation and migration of neural crest cells. PTM: SNAIL is phosphorylated by GSK3B. Once phosphorylated, it becomes a target for BTRC ubiquitination. Ubiquitinated on Lys-98, Lys-137 and Lys-146 by FBXL14 and BTRC leading to degradation. BTRC-triggered ubiquitination requires previous GSK3B-mediated SNAI1 phosphorylation. Similarity: Both SNAIL and SLUG belong to the snail C2H2-type zinc-finger protein family. Tissue specificity: SNAIL is expressed in a variety of tissues with the highest expression in kidney. Expressed in mesenchymal and epithelial cell lines. SLUG is expressed in placenta and adult heart, pancreas, liver, kidney and skeletal muscle.
Cellular localization	Slug is generally nuclear, while Snail is known to be both cytoplasmic and nuclear. Once phosphorylated (probably on Ser-107, Ser-111, Ser-115 and Ser-119) snail is exported from the nucleus to the cytoplasm where subsequent phosphorylation of the destruction motif and ubiquitination involving BTRC occurs.

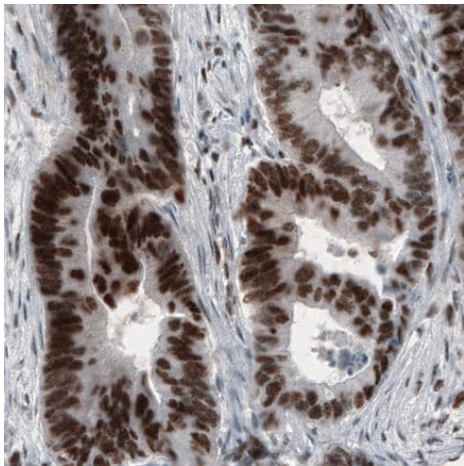
Images



Immunocytochemistry/ Immunofluorescence - Anti-SNAIL + SLUG antibody [CL3700] - N-terminal (ab224731)

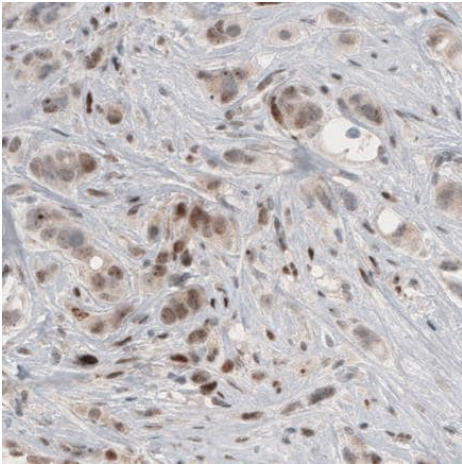
PFA-fixed, Triton X-100 permeabilized BeWo cells stained for SNAIL (Green) using ab224731 at 4 µg/ml in ICC/IF.

Microtubules are stained red.



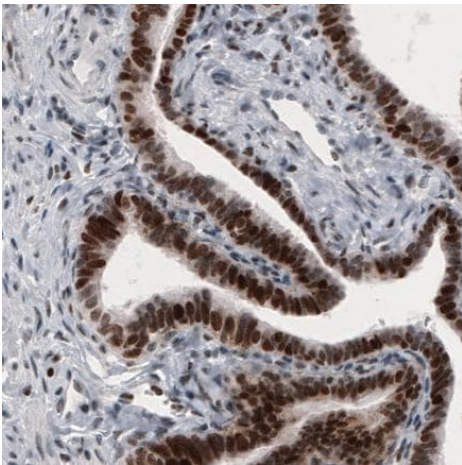
Immunohistochemistry (Formalin/PFA-fixed paraffin-embedded sections) - Anti-SNAIL + SLUG antibody [CL3700] - N-terminal (ab224731)

Paraffin-embedded human colorectal cancer tissue stained for SNAIL using ab224731 at 1/5000 dilution in immunohistochemical analysis.



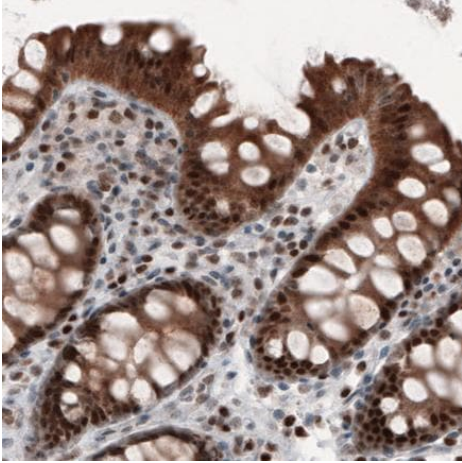
Paraffin-embedded human breast cancer tissue stained for SNAIL using ab224731 at 1/5000 dilution in immunohistochemical analysis.

Immunohistochemistry (Formalin/PFA-fixed paraffin-embedded sections) - Anti-SNAIL + SLUG antibody [CL3700] - N-terminal (ab224731)



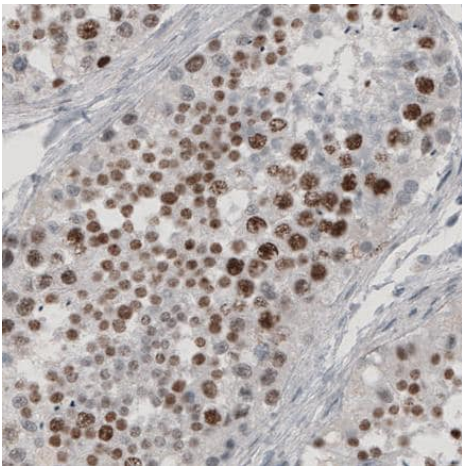
Paraffin-embedded human fallopian tube tissue stained for SNAIL using ab224731 at 1/5000 dilution in immunohistochemical analysis.

Immunohistochemistry (Formalin/PFA-fixed paraffin-embedded sections) - Anti-SNAIL + SLUG antibody [CL3700] - N-terminal (ab224731)



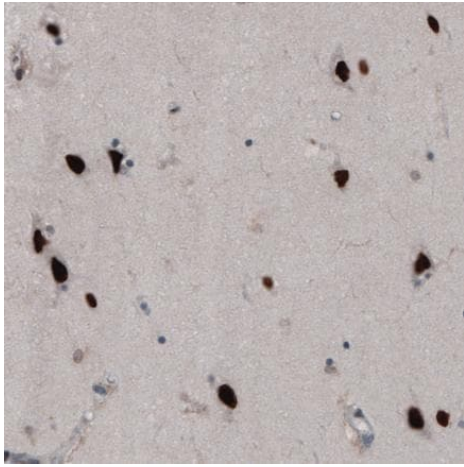
Paraffin-embedded human colon tissue stained for SNAIL using ab224731 at 1/5000 dilution in immunohistochemical analysis.

Immunohistochemistry (Formalin/PFA-fixed paraffin-embedded sections) - Anti-SNAIL + SLUG antibody [CL3700] - N-terminal (ab224731)



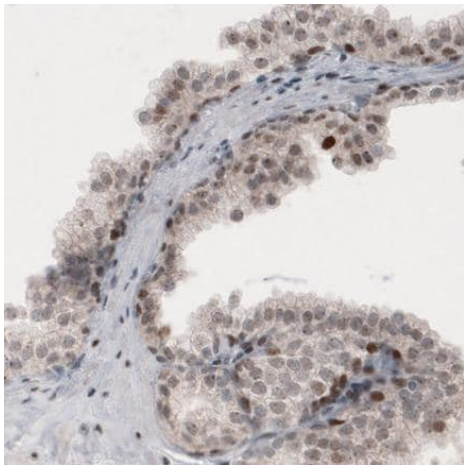
Paraffin-embedded human testis tissue stained for SNAIL using ab224731 at 1/5000 dilution in immunohistochemical analysis.

Immunohistochemistry (Formalin/PFA-fixed paraffin-embedded sections) - Anti-SNAIL + SLUG antibody [CL3700] - N-terminal (ab224731)



Paraffin-embedded human cortex tissue stained for SNAIL using ab224731 at 1/5000 dilution in immunohistochemical analysis.

Immunohistochemistry (Formalin/PFA-fixed paraffin-embedded sections) - Anti-SNAIL + SLUG antibody [CL3700] - N-terminal (ab224731)



Paraffin-embedded human prostate tissue stained for SNAIL using ab224731 at 1/5000 dilution in immunohistochemical analysis.

Immunohistochemistry (Formalin/PFA-fixed paraffin-embedded sections) - Anti-SNAIL + SLUG antibody [CL3700] - N-terminal (ab224731)

Please note: All products are "FOR RESEARCH USE ONLY. NOT FOR USE IN DIAGNOSTIC PROCEDURES"

Our Abpromise to you: Quality guaranteed and expert technical support

- Replacement or refund for products not performing as stated on the datasheet
- Valid for 12 months from date of delivery
- Response to your inquiry within 24 hours

- We provide support in Chinese, English, French, German, Japanese and Spanish
- Extensive multi-media technical resources to help you
- We investigate all quality concerns to ensure our products perform to the highest standards

If the product does not perform as described on this datasheet, we will offer a refund or replacement. For full details of the Abpromise, please visit <https://www.abcam.com/abpromise> or contact our technical team.

Terms and conditions

- Guarantee only valid for products bought direct from Abcam or one of our authorized distributors