


Product datasheet

Anti-SNAIL + SLUG (phospho S246) antibody ab63568

★★★★★ [1 Abreviews](#) [7 References](#) [3 Images](#)

Overview

Product name	Anti-SNAIL + SLUG (phospho S246) antibody
Description	Rabbit polyclonal to SNAIL + SLUG (phospho S246)
Host species	Rabbit
Specificity	ab63568 detects endogenous levels of SNAIL only when phosphorylated at serine 246.
Tested applications	Suitable for: WB, ICC/IF
Species reactivity	Reacts with: Human, Recombinant fragment Predicted to work with: Mouse 
Immunogen	Synthetic peptide corresponding to Human SNAIL + SLUG (phospho S246). Database link: O95863
Positive control	H29 nuclear lysate HuvEc cells
General notes	<p>The Life Science industry has been in the grips of a reproducibility crisis for a number of years. Abcam is leading the way in addressing this with our range of recombinant monoclonal antibodies and knockout edited cell lines for gold-standard validation. Please check that this product meets your needs before purchasing.</p> <p>If you have any questions, special requirements or concerns, please send us an inquiry and/or contact our Support team ahead of purchase. Recommended alternatives for this product can be found below, along with publications, customer reviews and Q&As</p>

Properties

Form	Liquid
Storage instructions	Shipped at 4°C. Store at -20°C. Stable for 12 months at -20°C.
Storage buffer	pH: 7.40 Preservative: 0.02% Sodium azide Constituents: PBS, 50% Glycerol (glycerin, glycerine), 0.87% Sodium chloride
Purity	Immunogen affinity purified
Purification notes	Affinity-purified from rabbit antiserum by affinity-chromatography using epitope-specific phosphopeptide. The antibody against non-phosphopeptide was removed by chromatography using non-phosphopeptide corresponding to the phosphorylation site.
Clonality	Polyclonal

Isotype

IgG

Applications

The Abpromise guarantee

Our **Abpromise guarantee** covers the use of ab63568 in the following tested applications.

The application notes include recommended starting dilutions; optimal dilutions/concentrations should be determined by the end user.

Application	Abreviews	Notes
WB		1/500 - 1/1000. Detects a band of approximately 26 kDa (predicted molecular weight: 29 kDa).
ICC/IF		1/500 - 1/1000.

Target

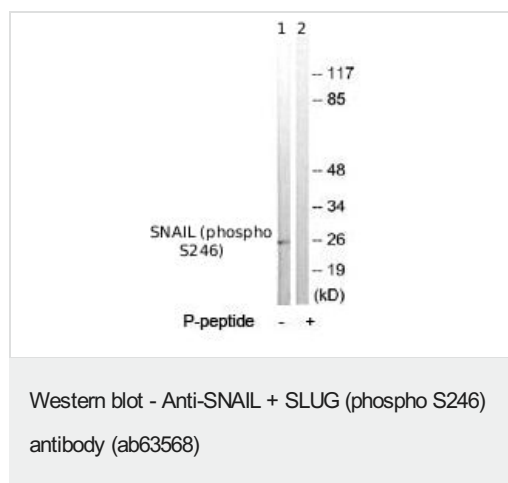
Relevance

Function: SNAIL is involved in the epithelial to mesenchymal transition (EMT) and formation and maintenance of embryonic mesoderm (By similarity). Binds to 3 E-boxes of the E-cadherin gene promoter and represses its transcription. SLUG is a transcriptional repressor, involved in the generation and migration of neural crest cells. PTM: SNAIL is phosphorylated by GSK3B. Once phosphorylated, it becomes a target for BTRC ubiquitination. Ubiquitinated on Lys-98, Lys-137 and Lys-146 by FBXL14 and BTRC leading to degradation. BTRC-triggered ubiquitination requires previous GSK3B-mediated SNAI1 phosphorylation. Similarity: Both SNAIL and SLUG belong to the snail C2H2-type zinc-finger protein family. Tissue specificity: SNAIL is expressed in a variety of tissues with the highest expression in kidney. Expressed in mesenchymal and epithelial cell lines. SLUG is expressed in placenta and adult heart, pancreas, liver, kidney and skeletal muscle.

Cellular localization

Slug is generally nuclear, while Snail is known to be both cytoplasmic and nuclear. Once phosphorylated (probably on Ser-107, Ser-111, Ser-115 and Ser-119) snail is exported from the nucleus to the cytoplasm where subsequent phosphorylation of the destruction motif and ubiquitination involving BTRC occurs.

Images



All lanes : Anti-SNAIL + SLUG (phospho S246) antibody (ab63568) at 1/500 dilution

Lane 1 : Extracts from HT29 cells (5-30µg), minus immunising peptide

Lane 2 : Extracts from HT29 cells (5-30µg) plus immunising peptide (5-10µg)

Predicted band size: 29 kDa

Observed band size: 26 kDa



Western blot - Anti-SNAIL + SLUG (phospho S246) antibody (ab63568)

All lanes : Anti-SNAIL + SLUG (phospho S246) antibody (ab63568) at 1/500 dilution

Lane 1 : SNAIL (SNAI1) Human Recombinant Protein

Lane 2 : SLUG (SNAI2) Human Recombinant Protein

Lysates/proteins at 0.1 µg per lane.

Secondary

All lanes : Goat Anti-Rabbit IgG H&L (HRP) preadsorbed (**ab97080**) at 1/5000 dilution

Developed using the ECL technique.

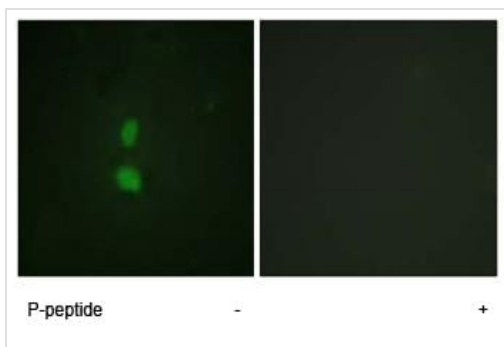
Performed under reducing conditions.

Predicted band size: 29 kDa

Observed band size: 68 kDa

Exposure time: 3 minutes

Ab63568 recognizes the tagged recombinant SLUG and SNAIL proteins which have an expected molecular weight of 68 kDa



Immunocytochemistry/ Immunofluorescence - Anti-SNAIL + SLUG (phospho S246) antibody (ab63568)

Immunofluorescent staining of HuvEc cells, using ab63568 at a 1/500 dilution, minus immunising peptide (left image) and plus immunising peptide (right image).

Please note: All products are "FOR RESEARCH USE ONLY. NOT FOR USE IN DIAGNOSTIC PROCEDURES"

Our Abpromise to you: Quality guaranteed and expert technical support

- Replacement or refund for products not performing as stated on the datasheet

- Valid for 12 months from date of delivery
- Response to your inquiry within 24 hours
- We provide support in Chinese, English, French, German, Japanese and Spanish
- Extensive multi-media technical resources to help you
- We investigate all quality concerns to ensure our products perform to the highest standards

If the product does not perform as described on this datasheet, we will offer a refund or replacement. For full details of the Abpromise, please visit <https://www.abcam.com/abpromise> or contact our technical team.

Terms and conditions

- Guarantee only valid for products bought direct from Abcam or one of our authorized distributors