


Anti-SNAP25 (phospho S187) antibody ab169871

[2 References](#) [1 Image](#)

Overview

Product name	Anti-SNAP25 (phospho S187) antibody
Description	Rabbit polyclonal to SNAP25 (phospho S187)
Host species	Rabbit
Tested applications	Suitable for: WB
Species reactivity	Reacts with: Rat Predicted to work with: Mouse, Guinea pig, Human, Non human primates, Zebrafish 
Immunogen	Synthetic peptide within Rat SNAP25 (phospho S187). The exact sequence is proprietary. Synthetic phospho-peptide corresponding to amino acid residues surrounding Ser187 conjugated to KLH Database link: P60881
Positive control	Rat hippocampal lysate
General notes	<p>The Life Science industry has been in the grips of a reproducibility crisis for a number of years. Abcam is leading the way in addressing this with our range of recombinant monoclonal antibodies and knockout edited cell lines for gold-standard validation. Please check that this product meets your needs before purchasing.</p> <p>If you have any questions, special requirements or concerns, please send us an inquiry and/or contact our Support team ahead of purchase. Recommended alternatives for this product can be found below, along with publications, customer reviews and Q&As</p>

Properties

Form	Liquid
Storage instructions	Shipped at 4°C. Store at +4°C short term (1-2 weeks). Upon delivery aliquot. Store at -20°C. Avoid freeze / thaw cycle.
Storage buffer	pH: 7.50 Constituents: 50% Glycerol, 0.88% Sodium chloride, 0.01% BSA, 0.24% HEPES
Purity	Immunogen affinity purified
Clonality	Polyclonal
Isotype	IgG

Applications

The Abpromise guarantee

Our **Abpromise guarantee** covers the use of ab169871 in the following tested applications.

The application notes include recommended starting dilutions; optimal dilutions/concentrations should be determined by the end user.

Application	Abreviews	Notes
WB		1/1000. Predicted molecular weight: 23 kDa.

Target

Function

t-SNARE involved in the molecular regulation of neurotransmitter release. May play an important role in the synaptic function of specific neuronal systems. Associates with proteins involved in vesicle docking and membrane fusion. Regulates plasma membrane recycling through its interaction with CENPF.

Tissue specificity

Neurons of the neocortex, hippocampus, piriform cortex, anterior thalamic nuclei, pontine nuclei, and granule cells of the cerebellum.

Sequence similarities

Belongs to the SNAP-25 family.
Contains 2 t-SNARE coiled-coil homology domains.

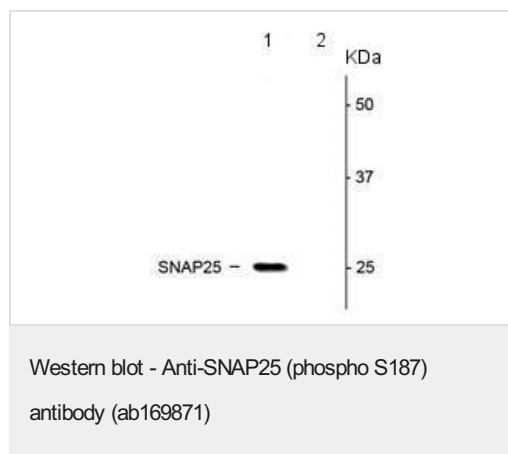
Post-translational modifications

Palmitoylated. Cys-85 appears to be the main site, and palmitoylation is required for membrane association.

Cellular localization

Cytoplasm > perinuclear region. Cell membrane. Cell junction > synapse > synaptosome. Membrane association requires palmitoylation. Expressed throughout cytoplasm, concentrating at the perinuclear region.

Images



All lanes : Anti-SNAP25 (phospho S187) antibody (ab169871) at 1/1000 dilution

Lane 1 : Rat hippocampal lysate

Lane 2 : Rat hippocampal lysate treated with Lambda phosphatase (400 units/100 µl lysate for 30 min)

Predicted band size: 23 kDa

Please note: All products are "FOR RESEARCH USE ONLY. NOT FOR USE IN DIAGNOSTIC PROCEDURES"

Our Abpromise to you: Quality guaranteed and expert technical support

- Replacement or refund for products not performing as stated on the datasheet
- Valid for 12 months from date of delivery

- Response to your inquiry within 24 hours
- We provide support in Chinese, English, French, German, Japanese and Spanish
- Extensive multi-media technical resources to help you
- We investigate all quality concerns to ensure our products perform to the highest standards

If the product does not perform as described on this datasheet, we will offer a refund or replacement. For full details of the Abpromise, please visit <https://www.abcam.com/abpromise> or contact our technical team.

Terms and conditions

- Guarantee only valid for products bought direct from Abcam or one of our authorized distributors