


## Product datasheet

# Anti-SNF2L antibody ab37003

★★★★☆ [2 Abreviews](#) [9 References](#) [3 Images](#)

### Overview

---

<b>Product name</b>	Anti-SNF2L antibody
<b>Description</b>	Rabbit polyclonal to SNF2L
<b>Host species</b>	Rabbit
<b>Specificity</b>	From Jan 2024, QC testing of replenishment batches of this polyclonal changed. All tested and expected application and reactive species combinations are still covered by our Abcam product promise. However, we no longer test all applications. For more information on a specific batch, please contact our Scientific Support who will be happy to help.
<b>Tested applications</b>	<b>Suitable for:</b> IP, WB, ICC/IF
<b>Species reactivity</b>	<b>Reacts with:</b> Human <b>Predicted to work with:</b> Mouse, Drosophila melanogaster, Zebrafish 
<b>Immunogen</b>	Synthetic peptide within Human SNF2L aa 850-950 conjugated to keyhole limpet haemocyanin. The exact sequence is proprietary. (Peptide available as <a href="#">ab38108</a> , <a href="#">ab38109</a> )
<b>General notes</b>	<p>The Life Science industry has been in the grips of a reproducibility crisis for a number of years. Abcam is leading the way in addressing this with our range of recombinant monoclonal antibodies and knockout edited cell lines for gold-standard validation. Please check that this product meets your needs before purchasing.</p> <p>If you have any questions, special requirements or concerns, please send us an inquiry and/or contact our Support team ahead of purchase. Recommended alternatives for this product can be found below, along with publications, customer reviews and Q&amp;As</p>

### Properties

---

<b>Form</b>	Liquid
<b>Storage instructions</b>	Shipped at 4°C. Store at +4°C short term (1-2 weeks). Upon delivery aliquot. Store at -20°C or -80°C. Avoid freeze / thaw cycle.
<b>Storage buffer</b>	pH: 7.40 Preservative: 0.02% Sodium azide Constituent: PBS

Batches of this product that have a concentration < 1mg/ml may have BSA added as a stabilising agent. If you would like information about the formulation of a specific lot, please contact our

scientific support team who will be happy to help.

<b>Purity</b>	Immunogen affinity purified
<b>Clonality</b>	Polyclonal
<b>Isotype</b>	IgG

## Applications

**The Abpromise guarantee** Our **Abpromise guarantee** covers the use of ab37003 in the following tested applications. The application notes include recommended starting dilutions; optimal dilutions/concentrations should be determined by the end user.

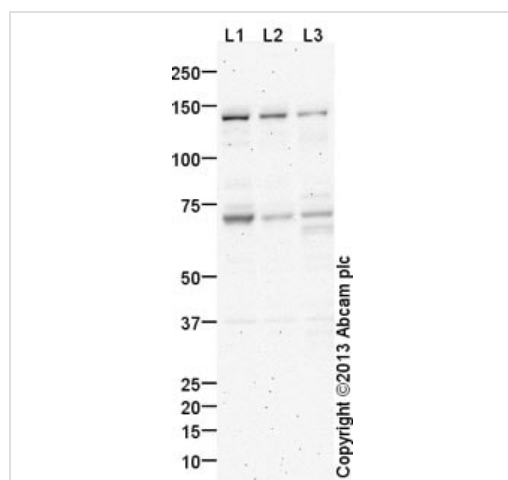
Application	Abreviews	Notes
<b>IP</b>		Use at an assay dependent concentration.
<b>WB</b>	★★★★☆ (2)	Use a concentration of 1 µg/ml. Detects a band of approximately 140 kDa (predicted molecular weight: 123 kDa). Abcam recommends using 3% milk as the blocking agent.
<b>ICC/IF</b>		Use a concentration of 1 µg/ml.

## Target

**Relevance** The protein encoded by this gene is a member of the SWI/SNF family of proteins. Members of this family have helicase and ATPase activities and are thought to regulate transcription of certain genes by altering the chromatin structure around those genes. Two transcript variants encoding different isoforms have been found for this gene.

**Cellular localization** Nuclear

## Images



Western blot - Anti-SNF2L antibody (ab37003)

**All lanes** : Anti-SNF2L antibody (ab37003) at 1 µg/ml (blocked with 3% milk)

**Lane 1** : Jurkat nuclear extract lysate ([ab14844](#))

**Lane 2** : HEK293 (Human embryonic kidney cell line) Nuclear Lysate

**Lane 3** : SHSY5Y Whole Cell Lysate

Lysates/proteins at 20 µg per lane.

### Secondary

**All lanes** : Goat Anti-Rabbit IgG H&L (HRP) ([ab97051](#)) at 1/10000 dilution

Developed using the ECL technique.

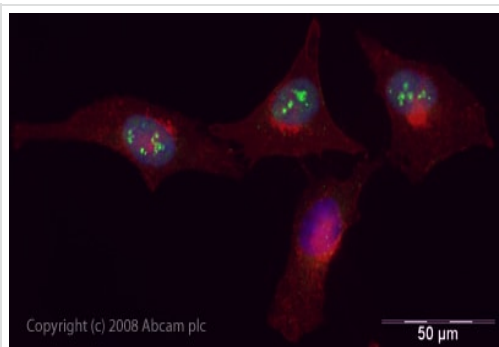
Performed under reducing conditions.

**Predicted band size:** 123 kDa

**Observed band size:** 140 kDa

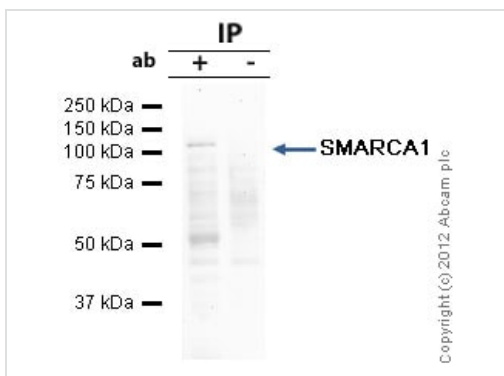
**Additional bands at:** 70 kDa. We are unsure as to the identity of these extra bands.

**Exposure time:** 16 minutes



Immunocytochemistry/ Immunofluorescence - Anti-SNF2L antibody (ab37003)

ICC/IF image of ab37003 stained human HeLa cells. The cells were PFA fixed (10 min), permeabilised in PBS-T (20 min) and incubated with the antibody (ab37003, 5µg/ml) for 1h at room temperature. 1%BSA / 10% normal goat serum / 0.3M glycine was used to quench autofluorescence and block non-specific protein-protein interactions. The secondary antibody (green) was Alexa Fluor® 488 goat anti-rabbit IgG (H+L) used at a 1/1000 dilution for 1h. Alexa Fluor® 594 WGA was used to label plasma membranes (red). DAPI was used to stain the cell nuclei (blue).



Immunoprecipitation - Anti-SNF2L antibody (ab37003)

SNF2L was immunoprecipitated using 0.5mg Jurkat whole cell extract, 5µg of Rabbit polyclonal to SNF2L and 50µl of protein G magnetic beads (+). No antibody was added to the control (-).

The antibody was incubated under agitation with Protein G beads for 10min, Jurkat whole cell extract lysate diluted in RIPA buffer was added to each sample and incubated for a further 10min under agitation.

Proteins were eluted by addition of 40µl SDS loading buffer and incubated for 10min at 70°C; 10µl of each sample was separated on a SDS PAGE gel, transferred to a nitrocellulose membrane, blocked with 5% BSA and probed with ab37003.

Secondary: Mouse monoclonal [SB62a] Secondary Antibody to Rabbit IgG light chain (HRP) ([ab99697](#)).

Band: 105kDa: SNF2L.

**Please note:** All products are "FOR RESEARCH USE ONLY. NOT FOR USE IN DIAGNOSTIC PROCEDURES"

**Our Abpromise to you: Quality guaranteed and expert technical support**

- Replacement or refund for products not performing as stated on the datasheet

- Valid for 12 months from date of delivery
- Response to your inquiry within 24 hours
  
- We provide support in Chinese, English, French, German, Japanese and Spanish
- Extensive multi-media technical resources to help you
- We investigate all quality concerns to ensure our products perform to the highest standards

If the product does not perform as described on this datasheet, we will offer a refund or replacement. For full details of the Abpromise, please visit <https://www.abcam.com/abpromise> or contact our technical team.

### **Terms and conditions**

---

- Guarantee only valid for products bought direct from Abcam or one of our authorized distributors