

Product datasheet

Anti-SNF2L antibody [EPR12190] ab175226

Recombinant RabMAb

5 Images

Overview

Product name	Anti-SNF2L antibody [EPR12190]
Description	Rabbit monoclonal [EPR12190] to SNF2L
Host species	Rabbit
Tested applications	Suitable for: WB, IHC-P, ICC/IF, IP Unsuitable for: Flow Cyt
Species reactivity	Reacts with: Human Does not react with: Mouse, Rat
Immunogen	Synthetic peptide within Human SNF2L aa 50-150 (Cysteine residue). The exact sequence is proprietary. Database link: P28370
Positive control	Hela, 293T and SH-SY5Y cell lysates; Human stomach tissue; 293T cells.
General notes	This product is a recombinant monoclonal antibody, which offers several advantages including: <ul style="list-style-type: none"> - High batch-to-batch consistency and reproducibility - Improved sensitivity and specificity - Long-term security of supply - Animal-free production For more information see here . Our RabMAb [®] technology is a patented hybridoma-based technology for making rabbit monoclonal antibodies. For details on our patents, please refer to RabMAb[®] patents .

Properties

Form	Liquid
Storage instructions	Shipped at 4°C. Store at +4°C short term (1-2 weeks). Upon delivery aliquot. Store at -20°C long term. Avoid freeze / thaw cycle.
Storage buffer	pH: 7.20 Preservative: 0.01% Sodium azide Constituents: 9% PBS, 40% Glycerol (glycerin, glycerine), 0.05% BSA, 50% Tissue culture supernatant
Purity	Protein A purified

Clonality	Monoclonal
Clone number	EPR12190
Isotype	IgG

Applications

The Abpromise guarantee Our **Abpromise guarantee** covers the use of ab175226 in the following tested applications. The application notes include recommended starting dilutions; optimal dilutions/concentrations should be determined by the end user.

Application	Abreviews	Notes
WB		1/1000 - 1/10000. Predicted molecular weight: 123 kDa.
IHC-P		1/50 - 1/100. Perform heat mediated antigen retrieval with citrate buffer pH 6 before commencing with IHC staining protocol.
ICC/IF		1/100 - 1/250.
IP		1/10 - 1/100.

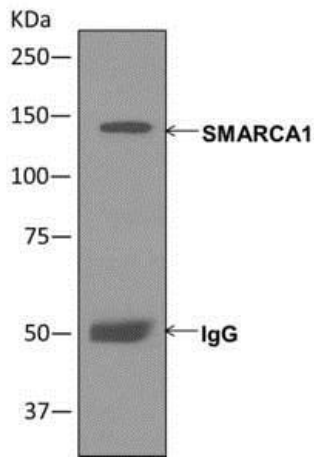
Application notes Is unsuitable for Flow Cyt.

Target

Relevance The protein encoded by this gene is a member of the SWI/SNF family of proteins. Members of this family have helicase and ATPase activities and are thought to regulate transcription of certain genes by altering the chromatin structure around those genes. Two transcript variants encoding different isoforms have been found for this gene.

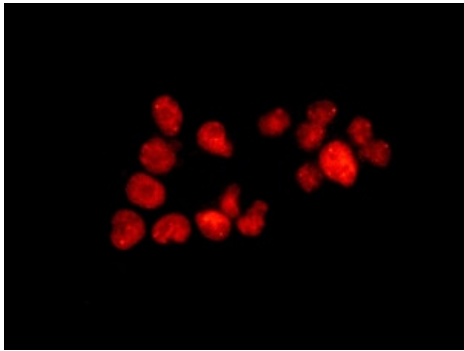
Cellular localization Nuclear

Images



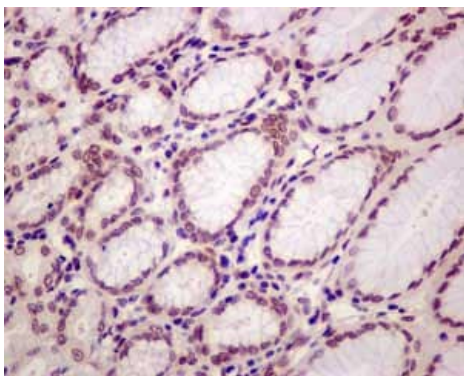
Western blot analysis on immunoprecipitation pellet from HeLa cell lysate using ab175226.

Immunoprecipitation - Anti-SNF2L antibody
[EPR12190] (ab175226)



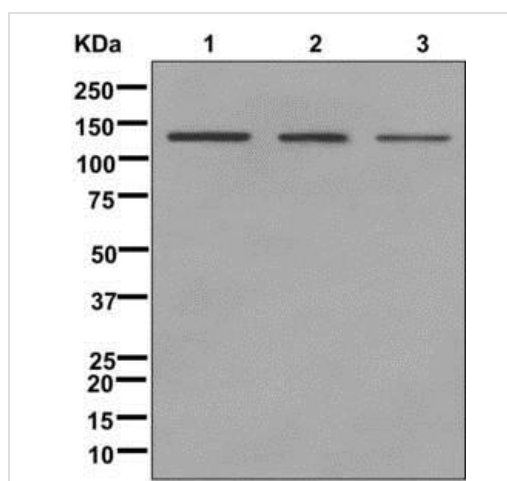
Immunofluorescent analysis of 293T cells labeling SNF2L with ab175226 at 1/100 dilution.

Immunocytochemistry/ Immunofluorescence - Anti-SNF2L antibody [EPR12190] (ab175226)



Immunohistochemical analysis of paraffin-embedded Human stomach tissue labeling SNF2L with ab175226 at 1/50 dilution.
Perform heat mediated antigen retrieval with citrate buffer pH 6 before commencing with IHC staining protocol.

Immunohistochemistry (Formalin/PFA-fixed paraffin-embedded sections) - Anti-SNF2L antibody
[EPR12190] (ab175226)



Western blot - Anti-SNF2L antibody [EPR12190]
(ab175226)

All lanes : Anti-SNF2L antibody [EPR12190] (ab175226) at
1/1000 dilution

Lane 1 : HeLa cell lysate

Lane 2 : 293T cell lysate

Lane 3 : SH-SY5Y cell lysate

Lysates/proteins at 10 µg per lane.

Predicted band size: 123 kDa

Why choose a recombinant antibody?



**Research with
confidence**
Consistent and
reproducible results



**Long-term and
scalable supply**
Recombinant
technology



**Success from the
first experiment**
Confirmed
specificity



**Ethical standards
compliant**
Animal-free
production

Anti-SNF2L antibody [EPR12190] (ab175226)

Please note: All products are "FOR RESEARCH USE ONLY. NOT FOR USE IN DIAGNOSTIC PROCEDURES"

Our Abpromise to you: Quality guaranteed and expert technical support

- Replacement or refund for products not performing as stated on the datasheet
- Valid for 12 months from date of delivery
- Response to your inquiry within 24 hours
- We provide support in Chinese, English, French, German, Japanese and Spanish
- Extensive multi-media technical resources to help you
- We investigate all quality concerns to ensure our products perform to the highest standards

If the product does not perform as described on this datasheet, we will offer a refund or replacement. For full details of the Abpromise, please visit <https://www.abcam.com/abpromise> or contact our technical team.

Terms and conditions

- Guarantee only valid for products bought direct from Abcam or one of our authorized distributors